



Epson SureColor P7570 | P9570

Production Photo, Fine Art and Proofing

Official Team Partner



The Art of Performance

We believe technology has the power to push creative boundaries, exceed the limits of imagination and propel artistry to new heights. That's why, after 20 years of perfecting wide-format printing technology, we are ready to unveil our most advanced printer to date, designed to transform your artistic vision into a truly unforgettable experience.

Introducing the SureColor P7570 & SureColor P9570



The SureColor P7570 and P9570 products use only genuine Epson-brand cartridges. Other brands of ink cartridges and ink supplies are not compatible and, even if described as compatible, may not function properly.

Printer Overview



© Monica Stevenson

Epson SureColor P7570
24" Wide

MSRP- \$4,695

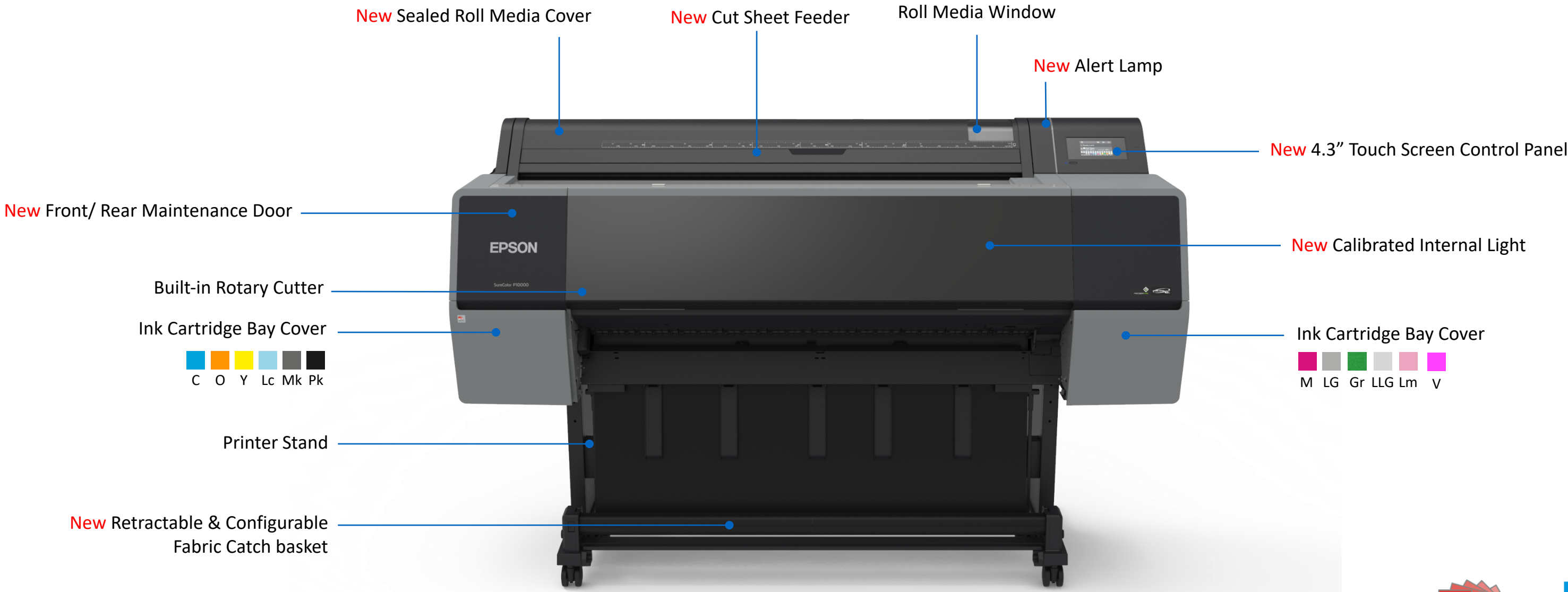


© Tim Tadder

Epson SureColor P9570
44" Wide

MSRP- \$6,595

Printer Overview



44"

Robust Design- 40 lbs heavier than SureColor P7000/9000



Product Overview

SureColor P7570 | P9750

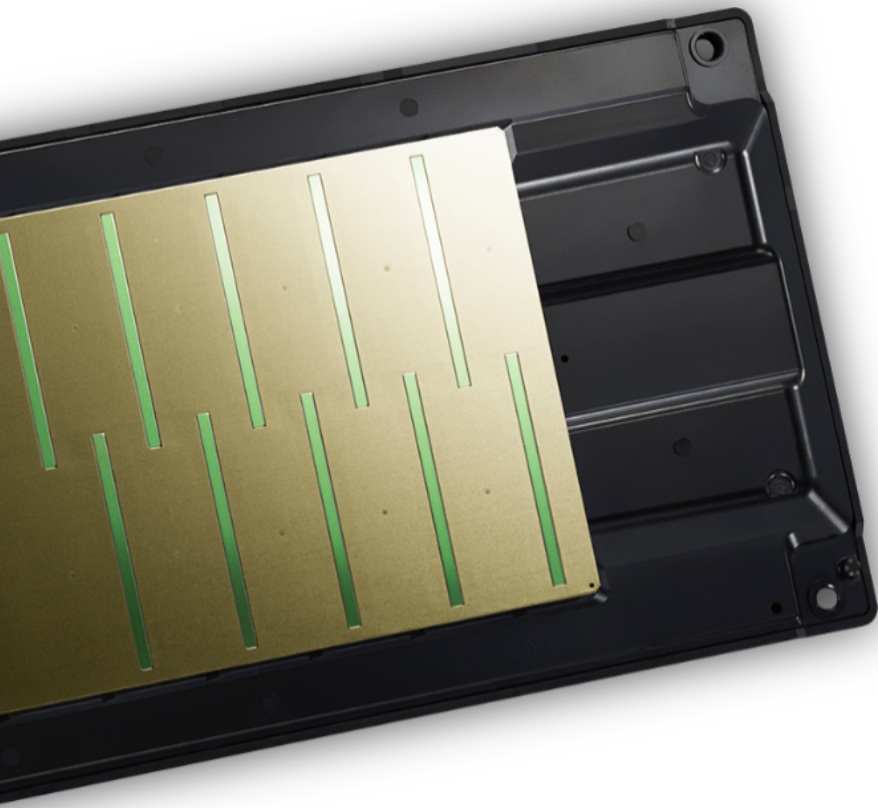


New Internal Printing Light

Gigabit Ethernet, USB 2.0
and Internal Hard Drive Slot

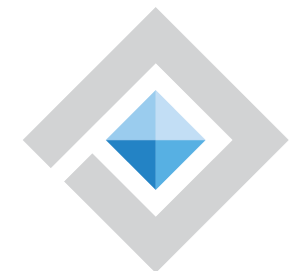
Retractable Fabric Catch Basket

Retractable, configurable media catch basket adjusts to the workflow



Epson PrecisionCore MicroTFP

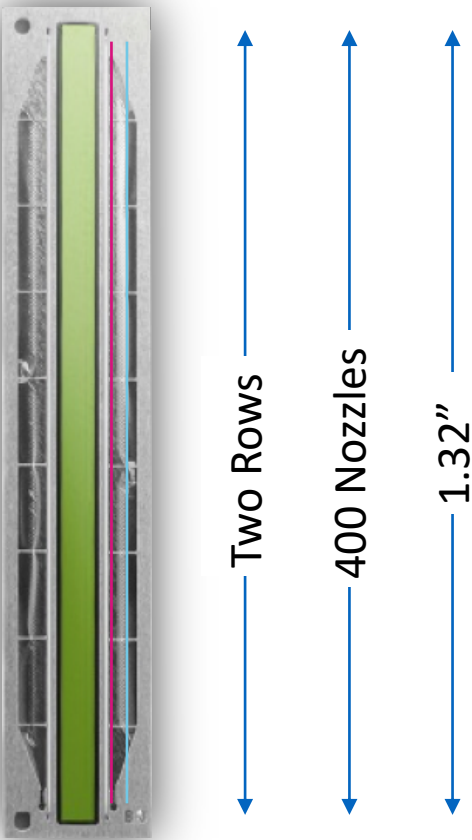
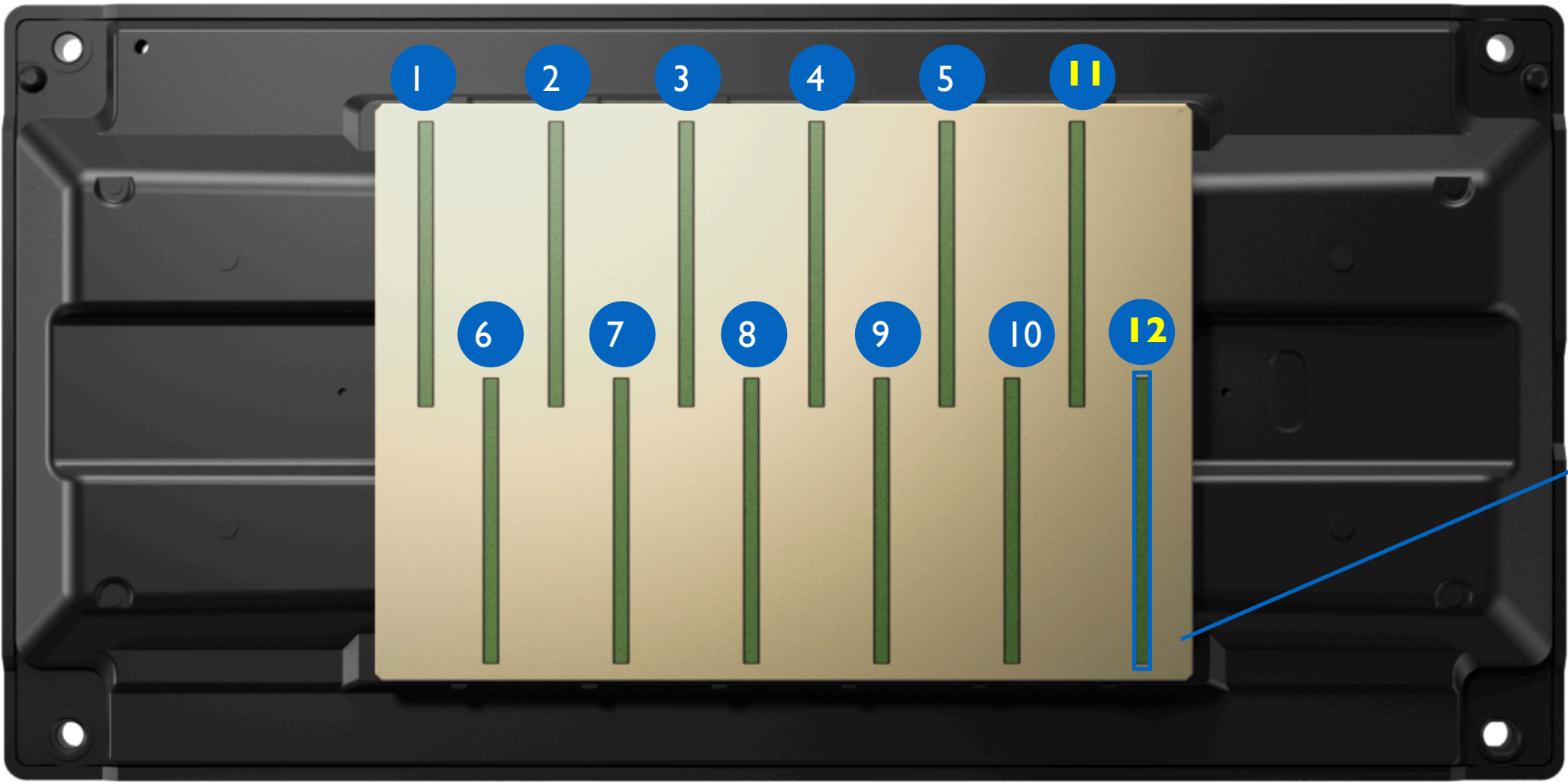
Newly Developed 12-Channel Print Head Technology



PRECISIONCORE
PRINTHEAD

PrecisionCore MicroTFP Print Head

All-New 12 Channel Industrial Print Head



Industrial Print Head for all Proofing and Photo Printers

The PrecisionCore MicroTFP print head is developed using individual PrecisionCore “blades”. Each “blade” has two rows - one for each color - across a 1.32” width. When combined, the final printhead array prints over a 2.64” print width.

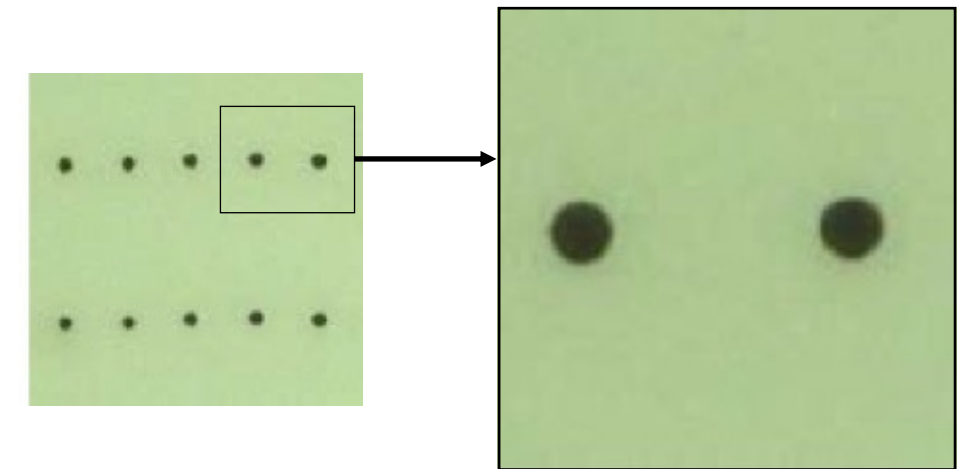
Single PrecisionCore Print Chip

PrecisionCore MicroTFP Print Head

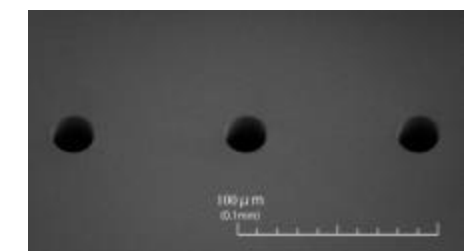
SureColor P7570 | P9570



- Latest Generation PrecisionCore Print Head Array
 - Over 9,600 nozzles from a 12-chip print head array
 - Droplets as small as 3.5 pl- Incredible accuracy and dot placement capability
- Dedicated Matte and Photo Black Channels- No Switching
 - Faster production workflows with dedicated nozzles for matte & photo black
 - Eliminates ink switching when changing between Matte and Photo medias
- Nozzle Verification Technology
 - Automatic maintenance can check nozzle health without using any ink in only microseconds
 - User configurable cleaning assures the best print every time
- Industrial-Level Reliability
 - Capable of high-volume printing with very little downtime for maintenance
 - New user maintenance doors allow production customers to do simple manual cleanings if necessary



Actual Ink Droplet on Paper
Magnified 150x



Roughly 20 microns in
diameter

Photographic Printing Performance

SureColor P7570 | P9570

	16" x 20" (Centered on 17" x 22")	20" x 30" (Centered on 24" x 34")
600 x 600 HS	1:09	1:57
1,200 x 1,200 HS	1:51	3:04
2,400 x 1,200 HS	3:32	5:59

Print times are based upon start of printhead movement over the page to drop ink – Stop time based on printhead moving to park position

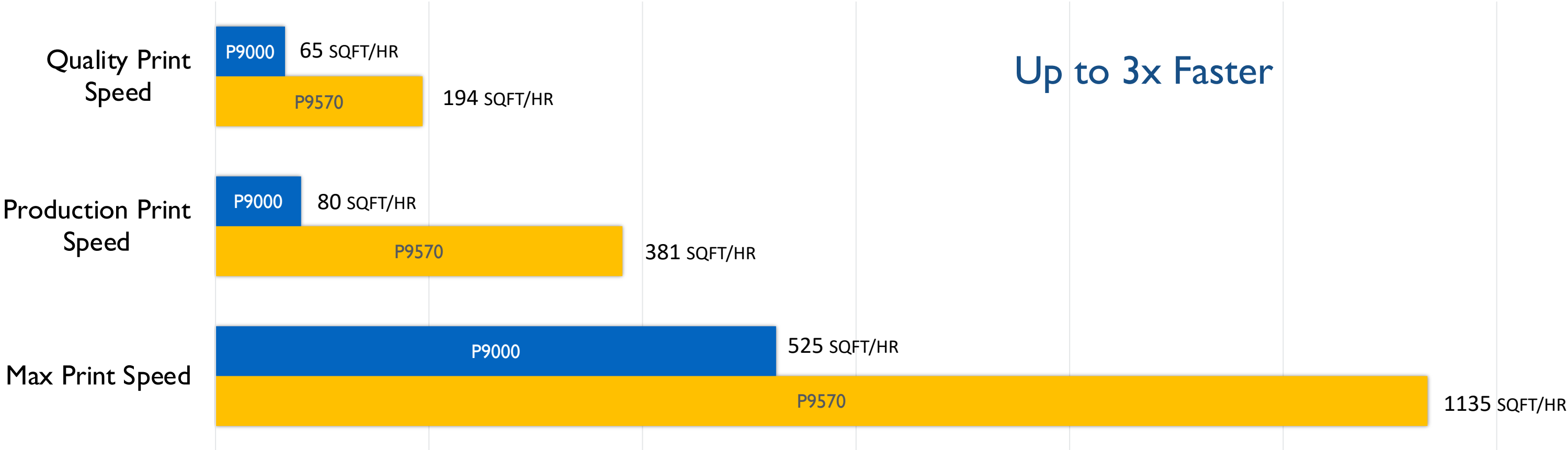
Test Images printed on Epson Premium Luster Photo Paper (260) using a standard ICC color managed workflow via Adobe® Photoshop®

HS = High-Speed Mode (Bi-Directional Print Mode)

Print speeds are shown in min:sec

Print Performance

SureColor P7570 | P9570



Up to 3x Faster

Print times are based upon start of printhead movement over the page to drop ink – Stop time based on printhead moving to park position
Quality prints speeds printed on Epson Premium Luster Photo Paper (260) at 1440x720dpi (P9000) or 600x600dpi (P9570)
Production prints speeds printed on Singleweight Matte Paper at 720x720dpi (P9000) or 600x600dpi (P9570)
Max prints speeds printed on Plain Paper at 360x720dpi (P9000) or 300x600dpi (P9570)
Print speeds are shown in square feet per hour



Epson UltraChrome PRO12

Newly Developed 12 Color Ink Technology

ULTRACHROME
PRO12 INK

EPSON UltraChrome PRO12

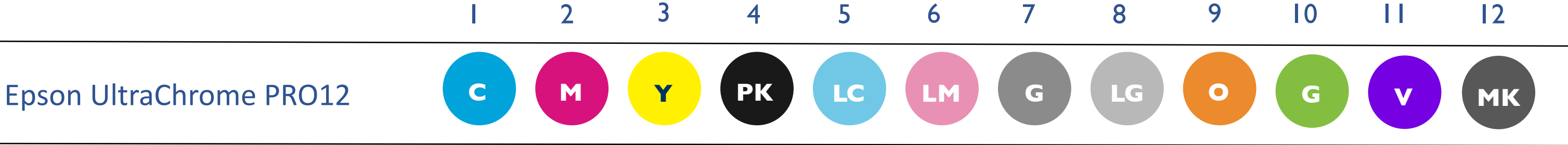
Industry Leading 12 Color Pigment Inkset



- Widest Color Gamut in it's class¹
 - Photography: No compromises, widest color gamut and Advanced B&W mode together
 - Proofing: Gamut expanding Orange, Green and Violet inks yields a 99% match of the PANTONE Formula Guide solid coated colors.²
 - Single SKU – No need for separate Standard and Commercial Edition SKUs
- Dedicated Photo Black and Matte Black Channels- No Black Switching
- Industry-Leading Print Permanence³
 - Print permanence ratings in testing by Wilhelm Imaging Research, Inc.
 - Up to 200 years color/ 400 years B&W
- Dramatically Improved Glossy Black Density- Black Enhance Overcoat Technology
 - Higher Dmax on glossy photography without the need for expensive Chroma Optimizer ink

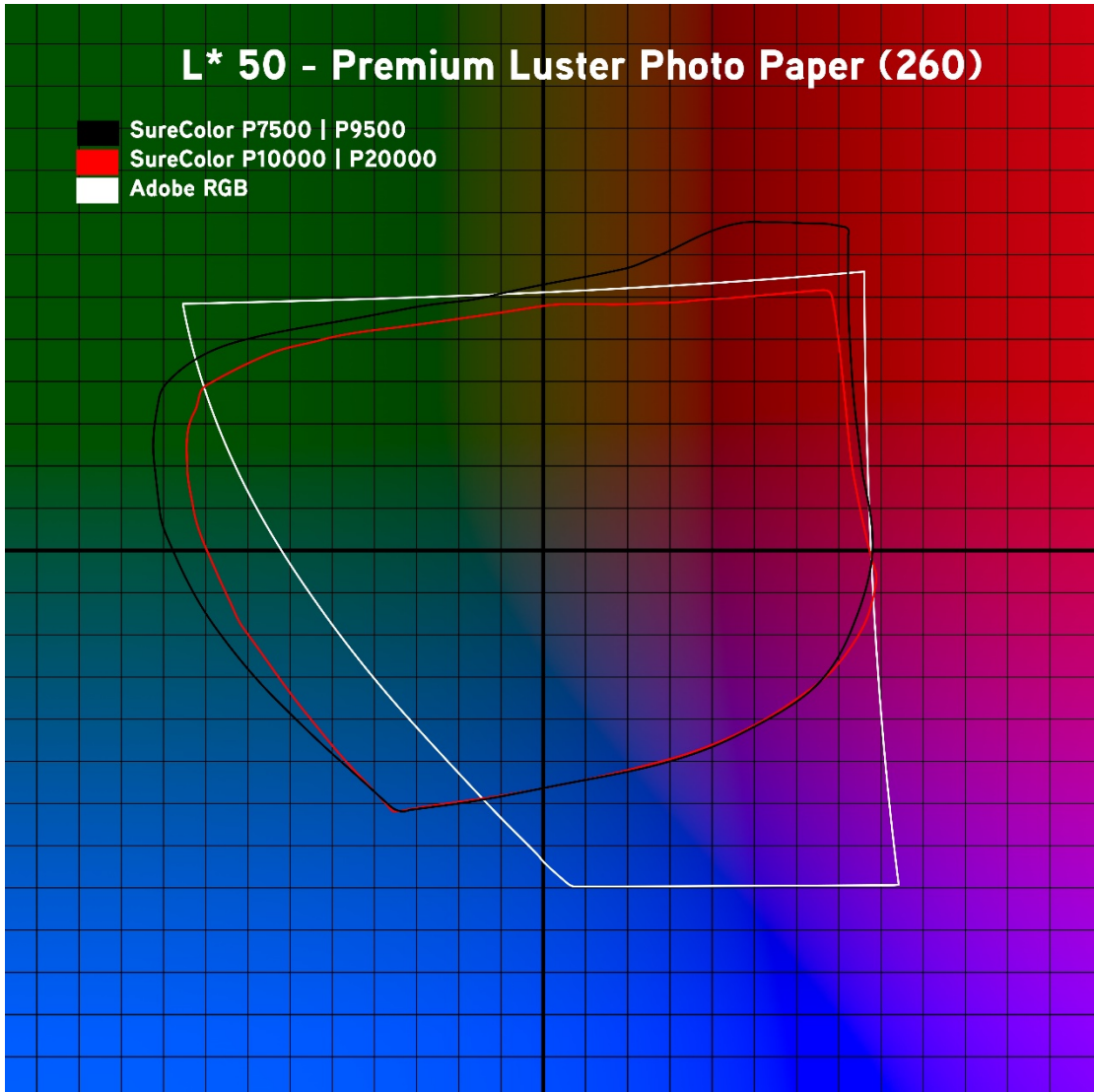


Ink Cartridge Capacities
150 ml | 350 ml | 700 ml

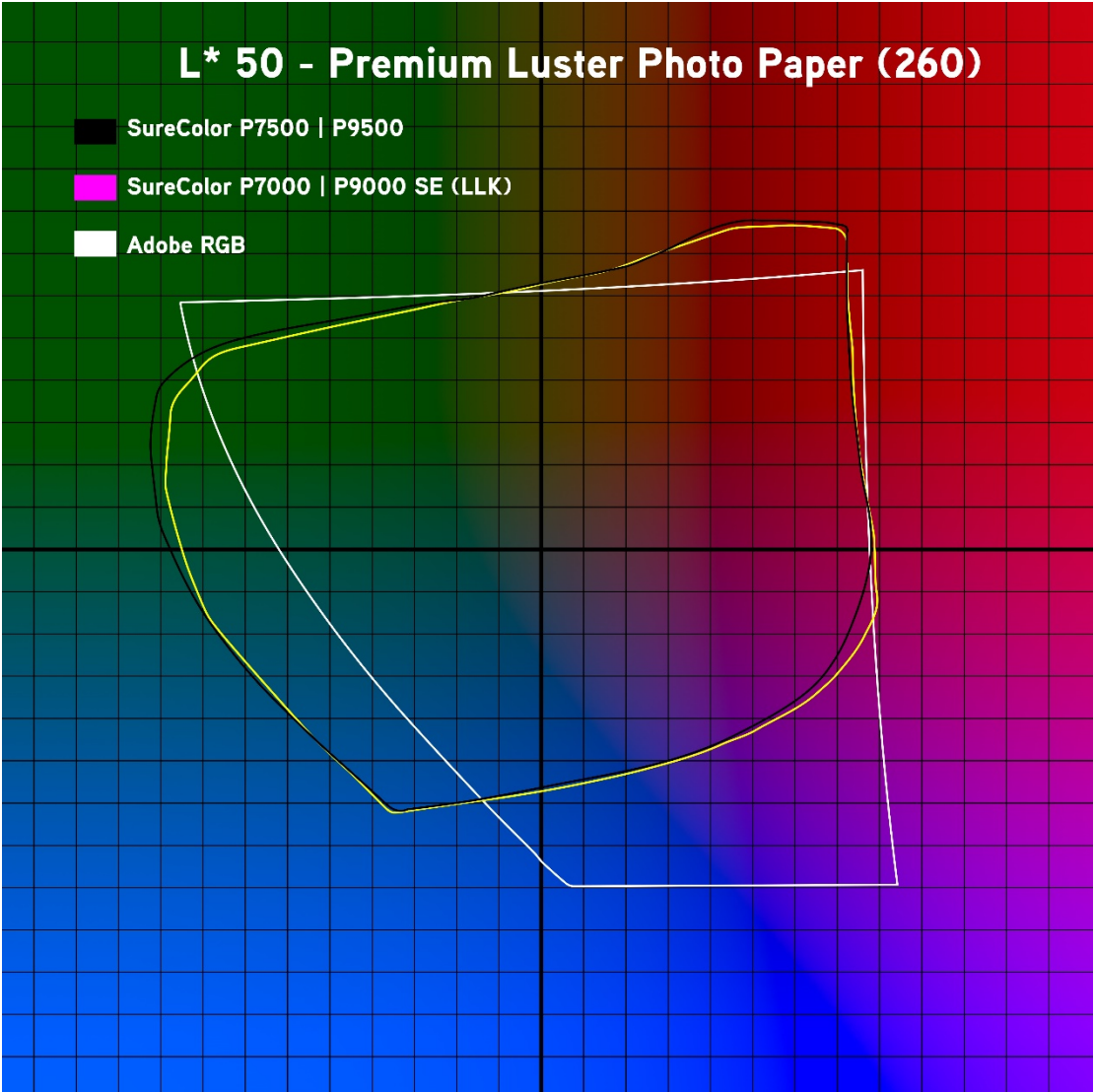


Color Gamut

Industry Leading 12 Color Pigment Inkset



Up to 23% wider than the SureColor P10000

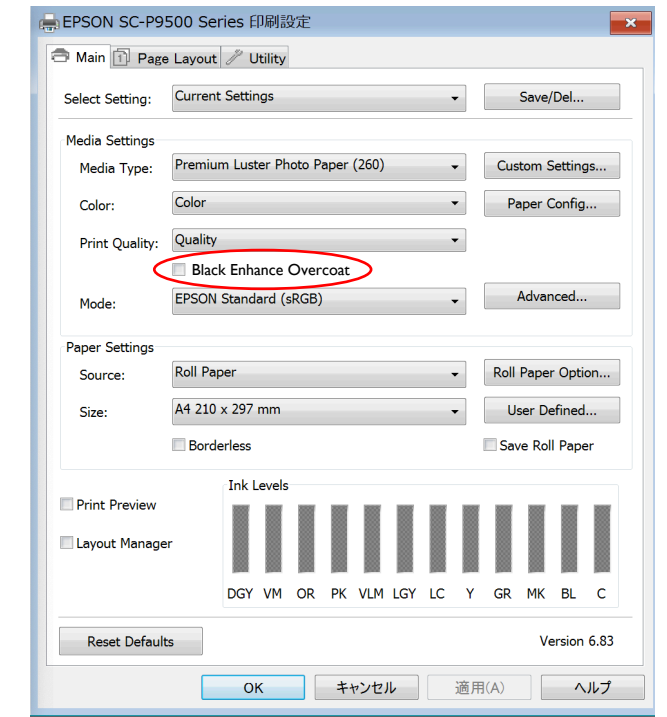


Up to 6% wider than SureColor P9000SE/CE

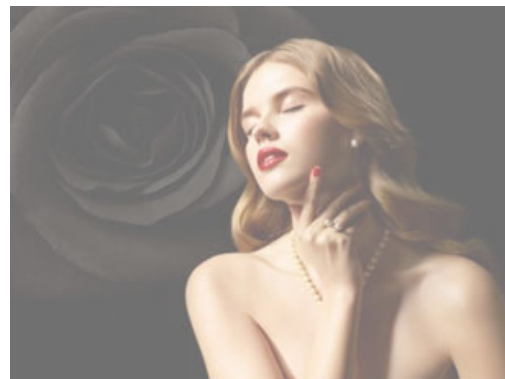
Black Enhance Overcoat

SureColor P7570 | P9570

- New print mode for richer black density - a “wet” look
 - Special driver mode to improve black density, contrast, and reduced bronzing & gloss differential
 - Optimal results achieved on Glossy/Metallic photographic media
 - Advanced precision screening overcoats deep printed blacks with existing light gray ink
- No “Chroma Optimizer” or “Gloss Optimizer” dedicated ink channel
 - Lower additional ink usage (no “flood” coat)



Image



+

Overcoat Layer
Where Lt. Gray Ink Applied



=

Final Print



Regardless of how its viewed, blacks will be denser, higher contrast and have a “wet” look.

Presentation graphics enhanced to show effect of Black Enhance Overcoat Function. Actual printed results may vary depending on image and media selected

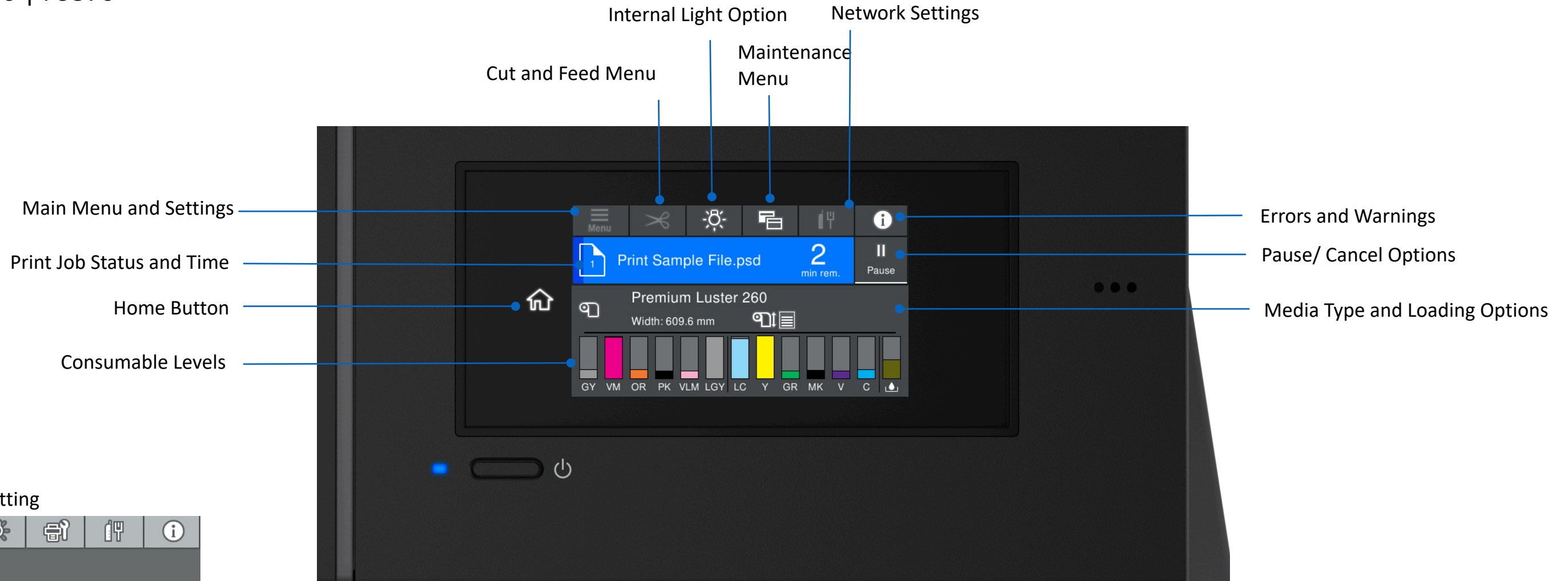


New Print Engine Features

SureColor P7570 | P9570

User Configurable User Interface

SureColor P7570 | P9570



“Light” Color Setting

“Medium” Color Setting

4.3” Touch Screen Control Panel

Customizable Colors / Complexity

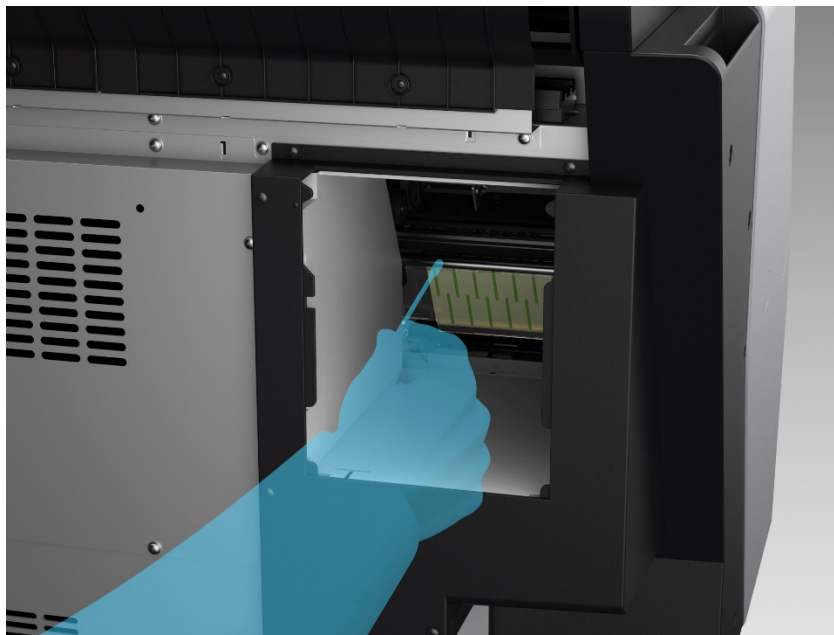
Consistent “Home” Button

“Simple/ Operator” Setting

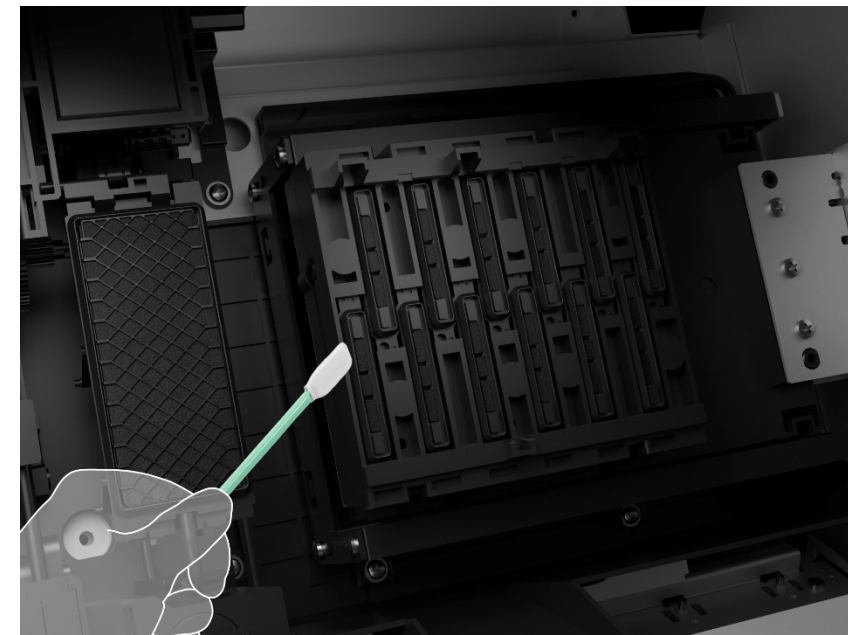
Simple User Maintenance

SureColor P7570 | P9570

- Automated Printer Maintenance
 - Head cleaning / auto nozzle check- is all printer controlled to provide the best print quality
- New user maintenance functions for high productivity users
 - Simple quarterly maintenance process using standard supplies
 - No service costs or technician required



Cleaning Around The Print Head



Print Head Cap Cleaning



Advanced Media Handling

SureColor P7570 | P9570

Roll Media Handling

SureColor P7570 | P9570

- Top-Loading Roll Media Support up to 24" Wide (SC-P7570) and 44" Wide (SC-P9570)
 - Supports most photographic, fine art, and design media types up to 7" in diameter
 - Spindle-Free media adapters adjustable for both 2" and 3" media core media
 - Easy to load- simply opening the roll cover prompts to initiate a load or unload of roll media
- Roll Media Length Tracking
 - LCD display and Barcode on media if removed to accurately estimate remaining length
- BorderFree Printing for Many Popular Print Widths
 - 10" , 13", 16", 17", 20", 24", 30", 36", and 44" (30" and above for SC-P9570 only)
 - Excels at printing standard 18" x 24" and 24" x 36" posters fully trimmed ready for pack and ship
- Built-in Automatic Rotary Media Cutter
 - Capable of smoothly cutting most photographic and fine art media types
- Optional Auto Take-up Reel System
 - Compatible with SC-P9570 printer and offers forward and reverse wind mode



Cut Sheet Media Handling

SureColor P7570 | P9570

- **New Top Loading Cut Sheet Media Slot**
 - Simple and accurate loading of cut sheet media from 8.5" x 11" up to 44" wide
 - Allows for no bend media path without requiring space behind the printer
 - Provides for a simple media feeding path for the most delicate media types

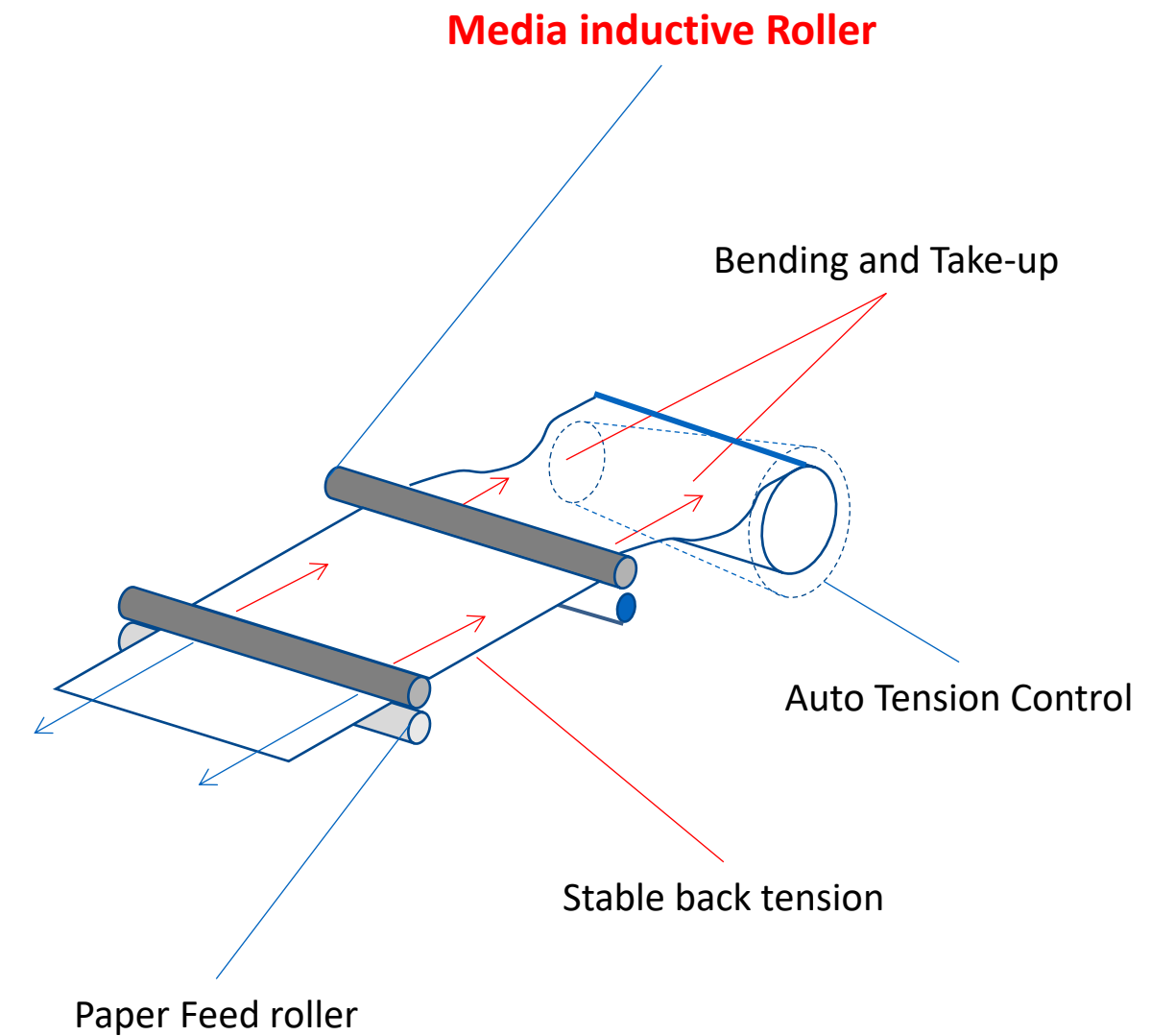
- **Single Sheet Front straight-through Poster Board Media Feeder**
 - Simple front feeder for poster board media up to 1.5 mm thick
 - Ideal for printing directly to virtually any thick media type
 - Supports single sheets from 17" wide up to 44" wide



Inductive Media Roller

SureColor P7570 | P9570

- Inductive Media Roller System Reduces Paper Feed Error
 - Assures accurate and consistent feed regardless of the weight of the media roll
 - Consistent back-tension
 - Ensures consistent printing performance from beginning to end of a roll.
- Simplified Media Loading Process
 - Easier for operator to load than previous generation printers
 - Automatic loading process- just open the media roll cover
 - Reduced media skew



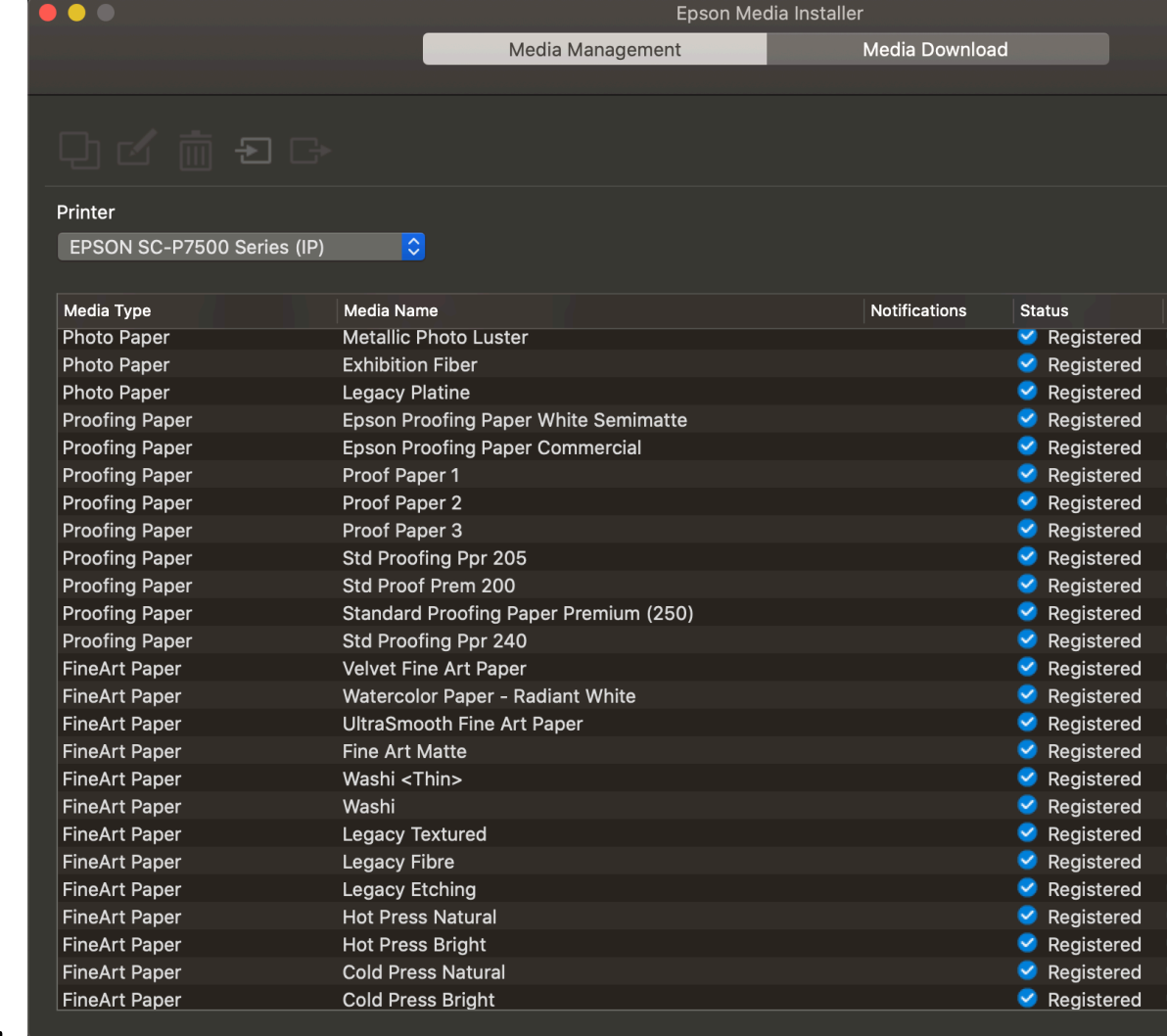
Consistent, repeatable media feed for sellable-quality prints at high production speeds

Epson Media Installer Software

SureColor P7570 | P9570

- Epson Media Installer Software Simplifies Media Management
 - Single, customized, media list on printer driver and control panel
 - Unified Settings: Print Driver, Printer Control Panel, and Profiles
 - Updates available from a central server
 - Accessed from the driver (PC) or an included Utility (MAC)
- Eliminates complex media installation process – One step process to...
 - Download existing newly released Epson Genuine Media with ease
 - Optimal mechanical parameters of the printer are automatically configured
 - ICC profiles installed and ready to use on macOS and Windows operating systems

Loading Epson media is now simple and is integrated into the driver to provide the best results





Options and Accessories

SureColor P7570 | P9570

Options and Accessories

SureColor P7570 | P9570

- **Optional Self-Encrypting 320 GB Internal Print Server**
 - Manage jobs at the printer control panel, or remotely via a built-in web interface
 - Quickly offloads print data from multiple workstations simultaneously
 - User-installable option and can be upgraded at any time
 - Advanced security with IPsec and IEEE802.1x authentication protocols
- **Embedded Adobe® PostScript® Server**
 - Directly print PostScript Files (PDF, EPS) and Raster Files (JPEG, TIFF, Cals-G4, etc)
 - User-installable option and can be upgraded at any time
 - For Hotfolder and PC-free Postscript operation
- **Take-Up Reel**
 - Uses existing P-Series Take-up reel. (SC-P9570 Only)



Standard Internal Print Server
320 GB



Epson SpectroProofer

SureColor P7570 | P9750

■ Epson SpectroProofer Compatible

- Optional 24- or 44-inch wide spectrophotometer developed jointly by X-Rite
- Simple installation; fits cleanly into the front of the printer
- Illuminate support for M0, M1 and M2, meets all standards (UV and Non UV Cut)
- Both black and white interchangeable backing plates included
- Built-in print dryer to accelerate the dry-down and reading process
- Supported by industry leading workflows: AGFA, CGS, EFI, Fuji, GMG, Onyx
- Previous generation SpectroProofers used on Epson Stylus Pro Printers are compatible when upgraded with the optional ISL30EP Spectrophotometer head.



X-Rite ILS30EP

Meets or exceeds all Industry standards and provides a simple proofing workflow

Industry Software Support

SureColor P7570 | P9570

■ Broad Industry Support from Leading Software Workflow Solutions

- Aurelon; Print Factory
- Caldera; Visual RIP+
- CGS; Oris ColorTuner/WEB
- GMG Color
- ColorByte, Imageprint
- ColorGate; Production Server
- Dinax; Mirage
- EFI; Fiery XF
- ErgoSoft
- Onyx; Thrive, Production House, PosterShop and RIP Center
- Serendipity; Black Magic
- Kodak Proofing Software



Innovative Solutions
Committed to Color

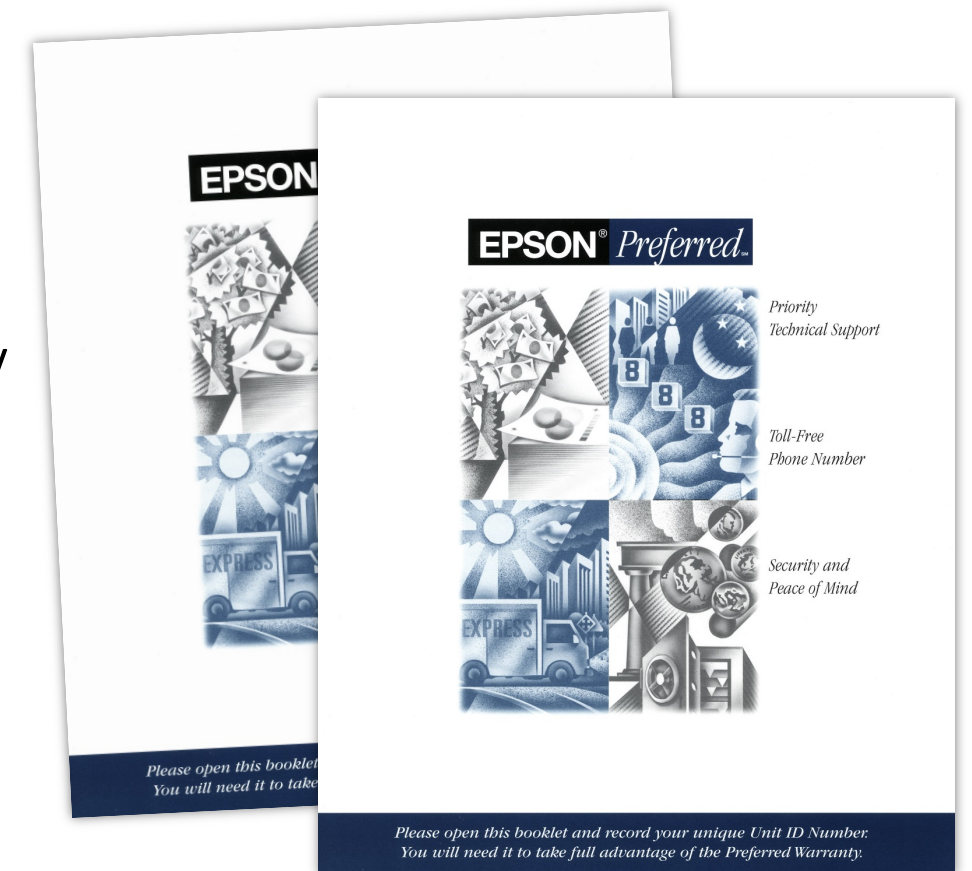


Warranty & Customer Support

SureColor P7570 | P9570

- Standard 1-Year Epson PreferredSM Limited Warranty
 - Free technical support Monday thru Friday
 - If required, onsite service provided - usually next business day*
 - Covers the printer, genuine Epson optional accessories, and software

- Optional Extended Service Plans up to a total of 5 Years coverage
 - Extends same Epson coverage when the standard limited in-box warranty ends
 - Can be purchased at any time while still under an Epson Preferred Limited Warranty
 - Single extended service plan “stackable” for 4 additional years
(in addition to the 1 year in-box warranty) for a total of 5 years coverage



* Limitations apply. See www.Epson.com/support for details.

What's New?

SureColor P7570 | P9570

- High performance, industrial PrecisionCore MicroTFP print head
 - 2.4 times the print speed of the current SC-P9000 printer
- UltraChrome PRO12 12-Color Ink Technology
 - Widest color gamut in its class¹
 - No Photo Black/ Matte Black switching required
- Black Enhance Overcoat Technology
 - Dramatically improved black density on glossy media
- Industrial Hardware Design
 - High reliability components- over 40lbs heavier
 - New catch basket design - Catch media underneath the printer or face-up for delicate media types
- User Interface Design
 - 4.3" user customizable touchscreen interface
- Media Inductive Roller and Loading
 - Accurate and fast media feeding with no quality compromise. Consistent quality from the beginning to the end of the roll
- Variety of Options and Accessories Available
 - Optional Internal HDD (print server), Adobe Postscript Server, or Take-up Reel (P9570) allows customers to configure the printer to their needs
- Production User Maintenance
 - Automatic maintenance for normal users; Simple user self-service for routine cleaning and maintenance for production users
- Epson Media Installer
 - Easy to configure and load Epson photographic and fine art media (Signature Worthy, Legacy, etc)



Ordering Information

SureColor P7570 | P9570

HARDWARE & ACCESSORIES

Description	Part Number
SureColor P7570 Printer– Standard Edition	SCP7570SE
SureColor P9570 Printer– Standard Edition	SCP9570SE
Optional 320 GB internal Hard Drive	C12C934551
Optional Internal Adobe PostScript Module	C12C934571
Additional Roll Media Adapters	C12C935931
Optional Take-up Reel (SC-P9570 only)	C12C815321
Spectroproofer (SC-P7570)	SPECTRO24UVS
Spectroproofer (SC-P9570)	SPECTRO44UVS
X-Rite ILS30EP Spectrophotometer head (head only)	C12C932021
P7570 Additional year Epson Preferred Plus Service (up to 4)	EPPP7500S1
P9570 Additional year Epson Preferred Plus Service (up to 4)	EPPP9500S1

CONSUMABLES

Description	Part Number
Maintenance Tank	T699700
Replacement Cutter	C12C815331
Replacement Borderless Pads	C13S210102
Maintenance/ Cleaning Sticks	C13S090013

INK

Description	150 mL	350 mL	700 mL
Photo Black	C13T44W120	C13T44P120	C13T44H120
Cyan	C13T44W220	C13T44P220	C13T44H220
Vivid Magenta	C13T44W320	C13T44P320	C13T44H320
Yellow	C13T44W420	C13T44P420	C13T44H420
Light Cyan	C13T44W520	C13T44P520	C13T44H520
Vivid Light Magenta	C13T44W620	C13T44P620	C13T44H620
Gray	C13T44W720	C13T44P720	C13T44H720
Matte Black	C13T44W820	C13T44P820	C13T44H820
Light Gray	C13T44W920	C13T44P920	C13T44H920
Orange	C13T44WA20	C13T44PA20	C13T44HA20
Green	C13T44WB20	C13T44PB20	C13T44HB20
Violet	C13T44WD20	C13T44PD20	C13T44H1D20

Specifications are Subject to Change Without Notice

1. Compared to 24-inch and 44-inch aqueous based printers priced at \$7,000 (USD) or less when printed on Epson Proofing Paper White Semimatte printed with the Epson Driver at 2400 x 1200 dpi.

2. 99% achievement of the PANTONE PLUS Solid coated colors is based on the use of Epson Proofing Paper White Semimatte printed with Epson UltraChrome HDX ink with Violet. PANTONE coverage may vary when printed under other conditions.

3. Ink lightfastness rating based on accelerated testing of prints on specialty media, displayed indoors, under glass. Actual print stability will vary according to media, printed image, display conditions, light intensity, humidity and atmospheric conditions. Epson does not guarantee longevity of prints. For maximum print life, display all prints under glass or lamination or properly store them.

For details see: <http://www.wilhelm-research.com>

Epson, MicroPiezo, PrecisionCore, PrecisionDot, UltraChrome, SpectroProofer, SureColor and MicroTFP are trademarks or registered trademarks, Epson Preferred is a service mark, and EPSON Exceed Your Vision is a registered logo mark of Seiko Epson Corp.

All other product brand names are trademarks and/or registered trademarks of their respective companies.

Epson disclaims any and all rights to these trademarks.

© Epson America, Inc. 2020 MA Oct 2020/ v3

