

Arc 127

Operation Manual



Quick Start Guide

INDEX

CONTENTS

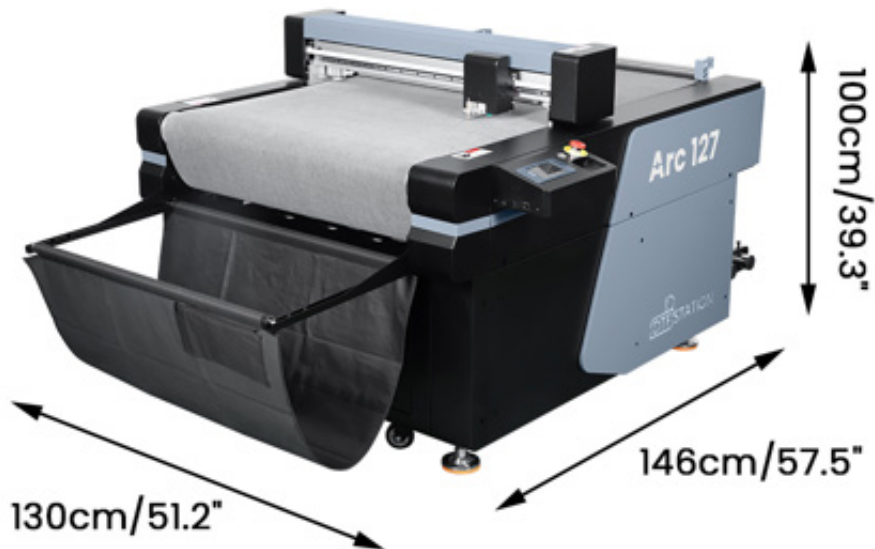
Placement	03
Unbox and Setup	08
Operation	09
- Understand Your Blade	09
- Setup DigiRip Driver	10
- Blade Testing	12
- Load Media	16
- Establish Connections	23
Maintenance	34
- EOD	34
- Weekly / As Needed	46

PLACEMENT

TICK BOX WHEN DONE WITH STEP

Please select an appropriate location for the Arc 127 cutter that is in close proximity to a wall outlet, ensuring the plug can be easily accessed and disconnected. It is essential to avoid placing the cutter in areas prone to sudden fluctuations in temperature and humidity. Additionally, the cutter should be positioned away from direct exposure to sunlight, intense lighting, or heat sources.

Ensure that the cutter is placed on a level and stable surface, with adequate clearance on all sides (refer to the illustrations provided below). The minimum required dimensions for the placement area are outlined as follows:

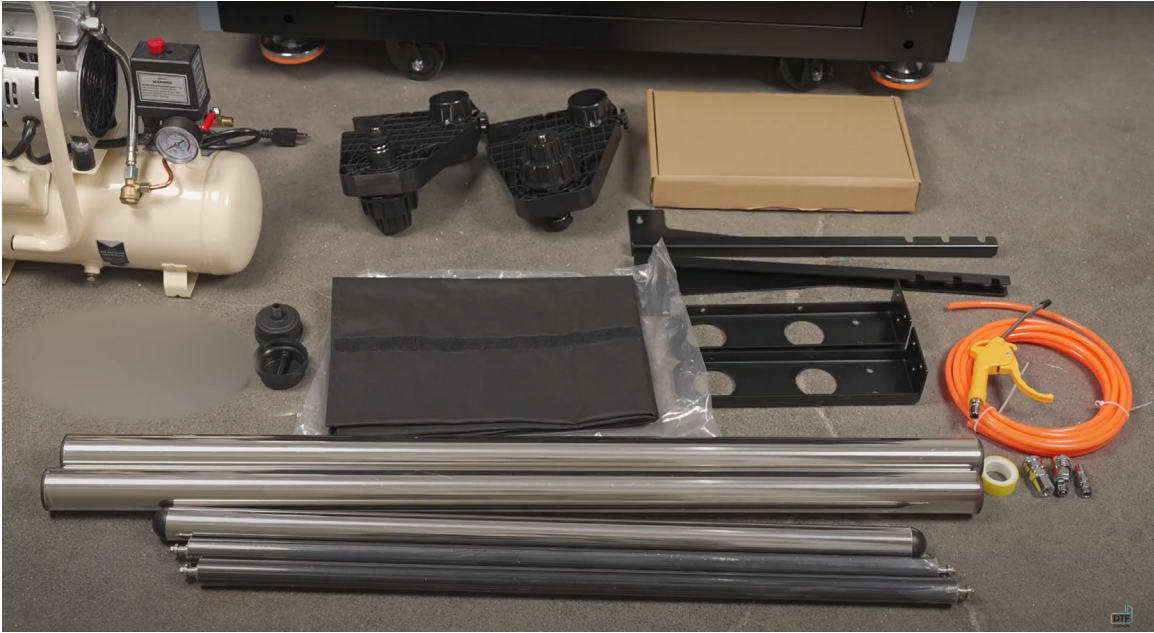


Net weight: 220KG/485lbs

UNBOX AND SETUP

Please make sure you have the following items from the image below, if any of the items are missing, please reach out to DTF Station tech support.

TICK BOX WHEN DONE WITH STEP



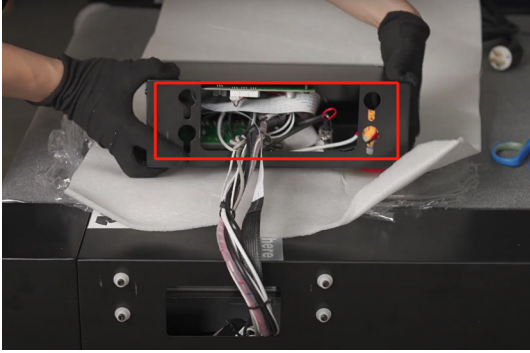
The following tools are needed for the installation: Wrench, Hammer, Electric drill, protective gloves and empty box for storing crews. For the detailed setup video please scan the video QR code on the cover.



Checking Screen Wires on Arc 127

TICK BOX WHEN DONE WITH STEP

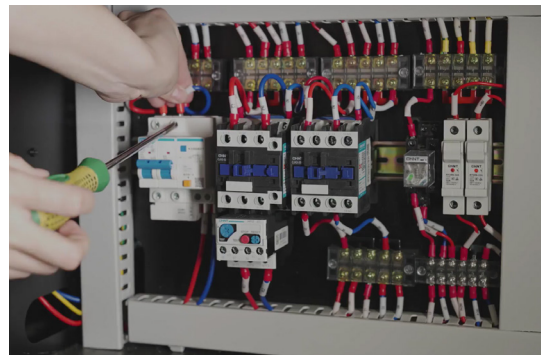
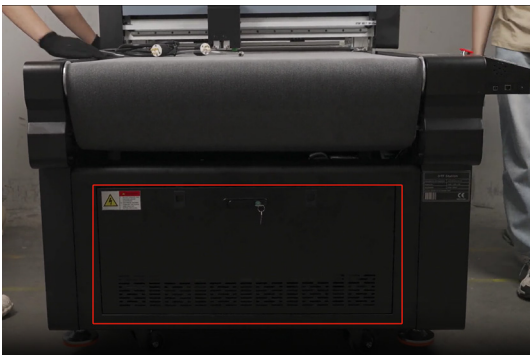
Before attaching the screen assembly, check that all connections are securely fastened to the board and the screen. If any wires are partially loosened, firmly push the connectors in. If you are unsure, please leave the screen as is and contact the DTF Station technician for assistance.



Checking Breaker Wires on Arc 127

TICK BOX WHEN DONE WITH STEP

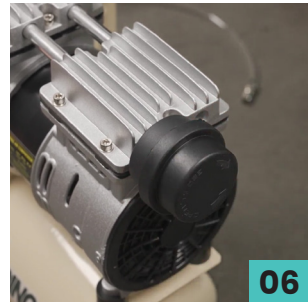
Remove the front panel. Loosen the wire screws slightly, push the wires in more, and tighten the screws on all the breakers. This ensures that no wires have loosened during transportation. If you are unsure, please leave the screen as is and contact the DTF Station technician for assistance.



Connecting Air Compressor to Arc 127 -Silencer

TICK BOX WHEN DONE WITH STEP

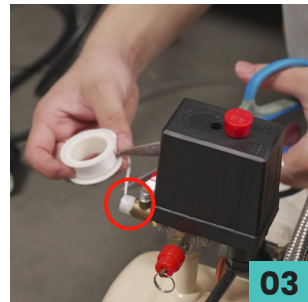
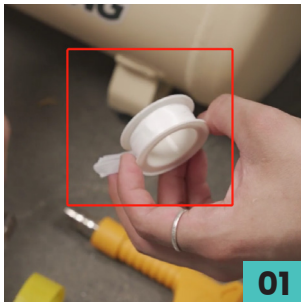
Assemble the air compressor silencer and attach it to the body.



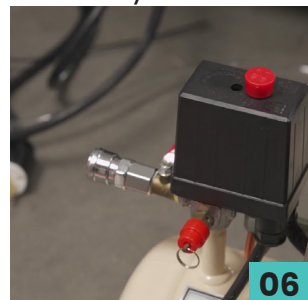
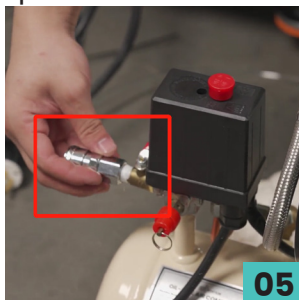
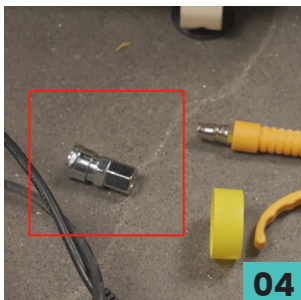
Connecting Air Compressor to Arc 127 -Female Coupler

TICK BOX WHEN DONE WITH STEP

Use plumber's tape to create an airtight seal on the valve



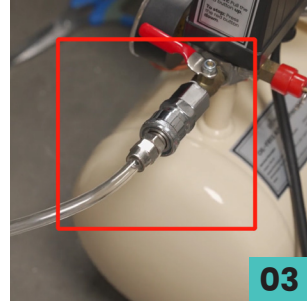
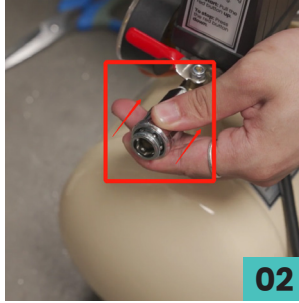
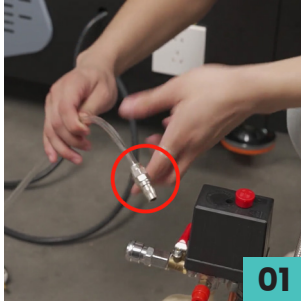
Attach the female coupler and make sure it's securely fastened



Connecting Air Compressor to Arc 127 -Male Coupler

TICK BOX WHEN DONE WITH STEP

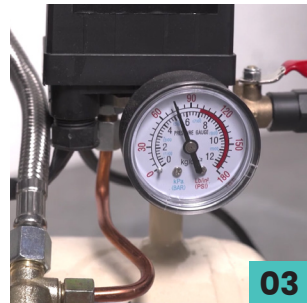
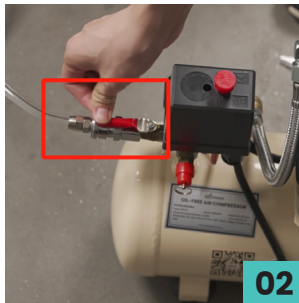
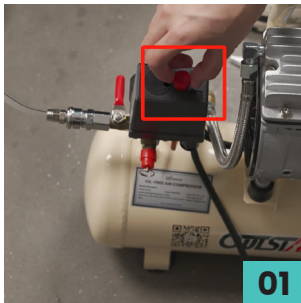
Use plumber's tape to create an airtight seal on the valve



Connecting Air Compressor to Arc 127 -Power

TICK BOX WHEN DONE WITH STEP

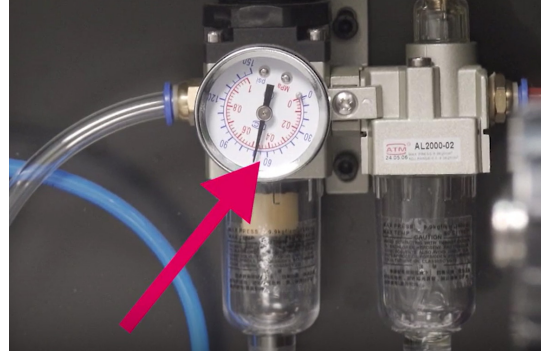
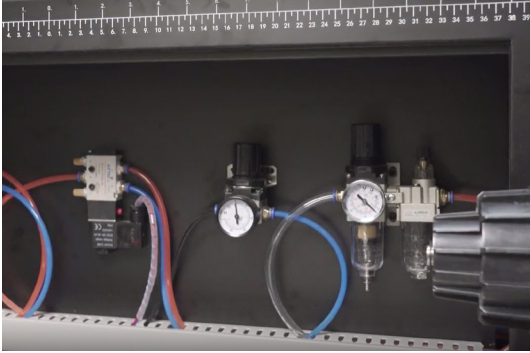
Plug in the power cord, release the power button, and open the air valve. Check to see if the air pressure gauge exceeds 60 PSI.



Checking Air Pressure on Arc 127

TICK BOX WHEN DONE WITH STEP

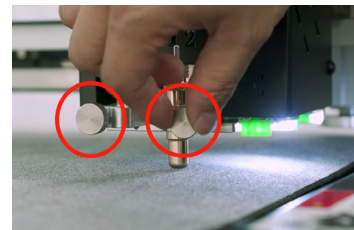
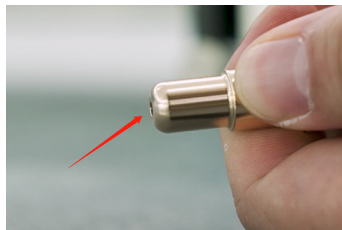
Open the backside cover and check the air regulator pressure gauge. High pressure can cause issues, so set it to 20 PSI or around 0.5 BAR. Adjust the pressure as needed by releasing the top black knob and turning it clockwise or counterclockwise. Please have a DTF Station technician review the settings as needed.



Installing Blade and Blade Holder to Arc 127 Cutter Carriage

TICK BOX WHEN DONE WITH STEP

Locate the cutter accessory box, and find the blade and blade holders to install as shown in the video: <https://www.youtube.com/watch?v=khMEINjtWhI> Ensure the proper blade exposure length; viewing it from a straight angle, you should barely see the blade tip (for about 1mm). Exposing the blade too far can damage the belt and wear out or break the blade. Attach the blade holder to the carriage and lock it in place.



ARC 127 OPERATION

Understand the Blades

01. Standard Blade:

(for thinner and softer materials)

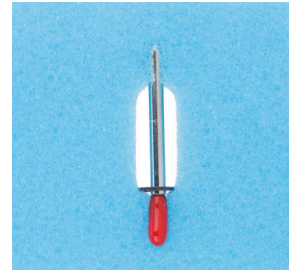
This blade is designed for cutting thinner and softer materials such as [DTF, UV DTF, Stickers, and similar media](#). It ensures clean and precise cuts for these types of materials.



02. Heavy-Duty Blade:

(for thicker and harder materials)

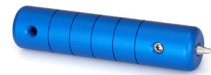
This blade is suitable for cutting thicker and harder materials like [Cardboard, PVC, Packaging Boxes](#), and similar media. It is engineered to handle more rigid materials effectively.



03. Folding Blade:

(for creating impressions or indentations)

If you need to create [Impressions or Indentations](#) on materials such as cardboard or packaging boxes, the folding blade is the appropriate tool for this purpose.



[The Arc 127 cutting machine is designed to cut materials with a thickness of less than 1mm.](#) Using materials thicker than this limit may result in blade breakage, accelerated blade wear, or damage to the media.

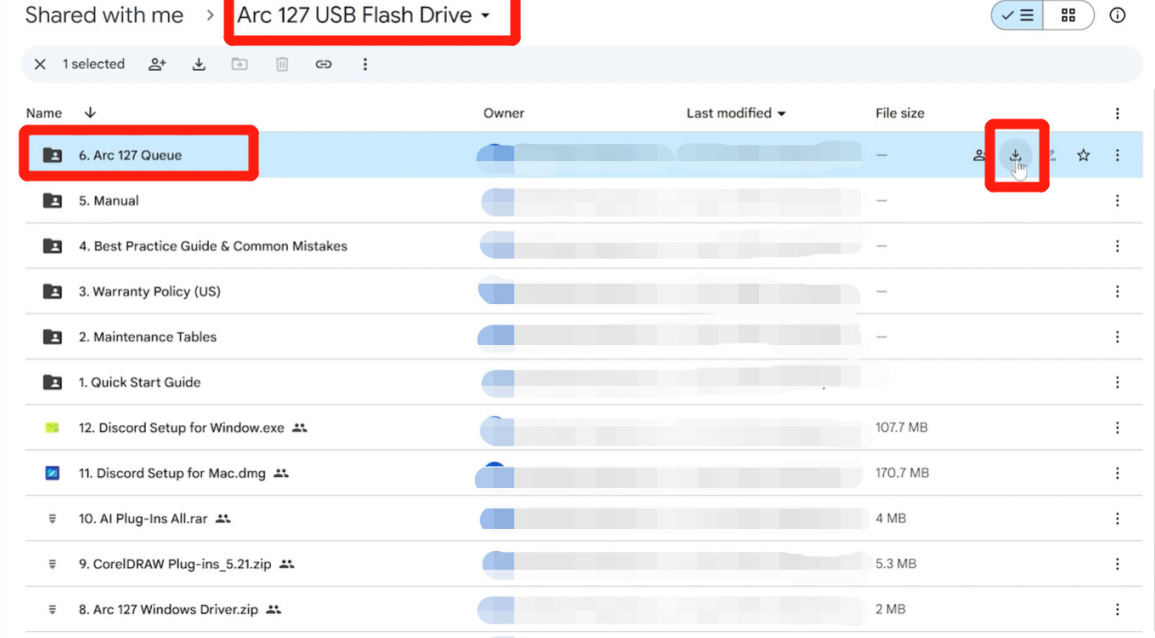
If you are using a new type of media and are uncertain about its compatibility with the cutter, it is highly recommended to [conduct a blade test](#) using a sample piece of the material. This will help determine whether the material can be cut effectively without causing harm to the blade or the machine.

For step-by-step guidance on how to properly test the blade with new materials, please refer to the [Arc 127 Operation - Blade Test](#) section of this manual. This section provides detailed instructions to ensure safe and accurate testing. By using the appropriate blade for your specific material and adhering to the recommended thickness limits, you can achieve optimal cutting results while prolonging the lifespan of your blades and machine. Always prioritize testing and compatibility when working with new or unfamiliar materials.

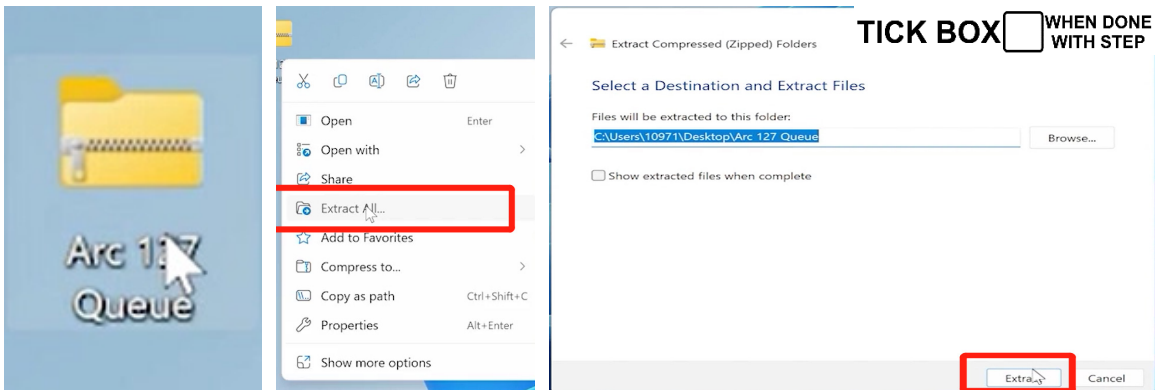
Setup DigiRip Driver

01. Access the USB flash drive or the Arc 127 Google Drive and locate the compressed file titled "Arc 127 Queue."

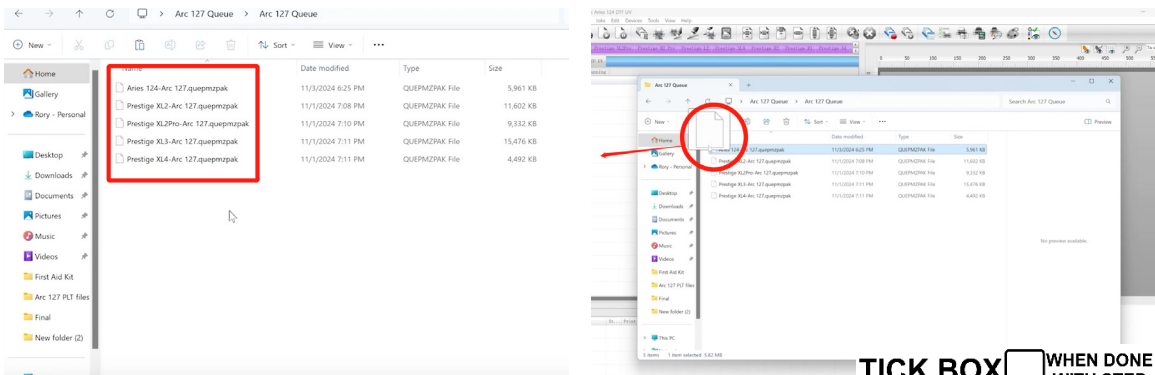
TICK BOX WHEN DONE WITH STEP



02. Download and extract the contents of the file to your device.



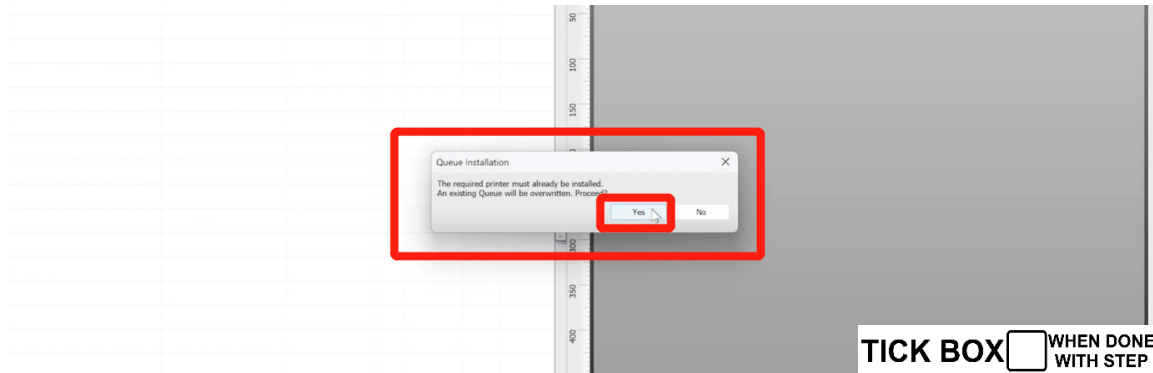
03. Locate the file from the downloaded contents corresponding to your devices (printers), then drag and drop it into the DigiRip interface.



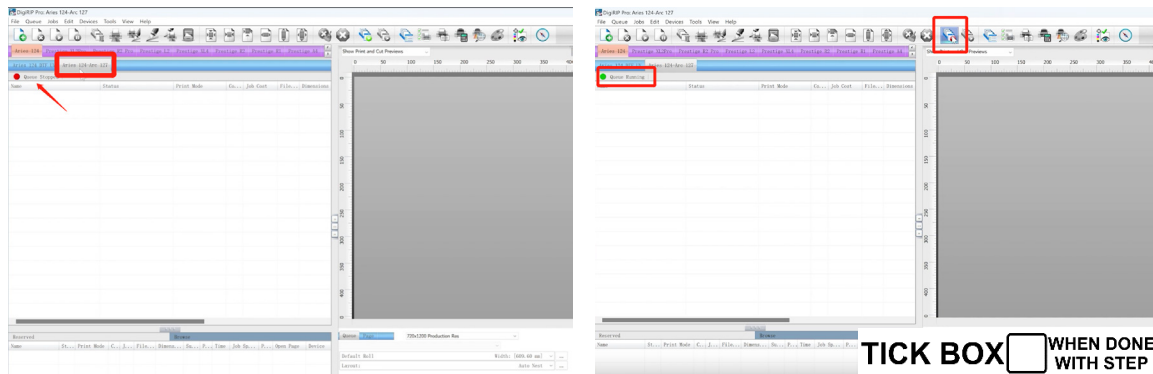
TICK BOX WHEN DONE WITH STEP

10

04. Upon the appearance of the Queue Installation prompt, select “YES” to proceed. This action will initiate the installation of the new Arc 127 queue.



05. However, the queue will initially be in an inactive state. To activate it, navigate to the main tab and select Start/Stop Queue to enable its functionality.



Blade Pressure Testing and Adjusting Suggestions

Even when the blade is securely installed in its holder, it is essential to test and adjust the blade pressure to ensure the compatibility with the material. A blade pressure test should always be conducted when using a new material or after installing a blade.

Impact of Blade Pressure on Cutting Performance

01. Excessive Blade Pressure

Applying too much blade pressure, which involves exposing the blade too far, can lead to several issues. It may damage the belt, accelerate blade wear, or even cause the blade to break prematurely. Additionally, excessive pressure can result in the media bunching up during the cutting process, compromising the quality of the cut.

02. Insufficient Blade Pressure

Conversely, insufficient blade pressure, characterized by exposing the blade too short, can also pose significant problems. Inadequate pressure may prevent the blade from cutting through the material properly, leading to incomplete cuts and material wastage.

Optimal Blade Pressure

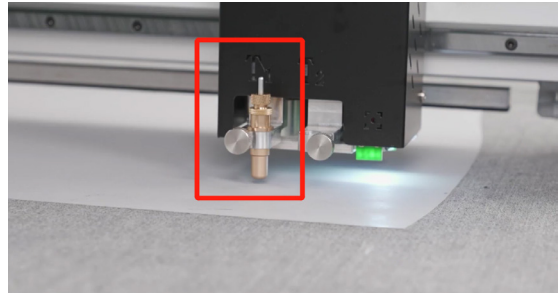
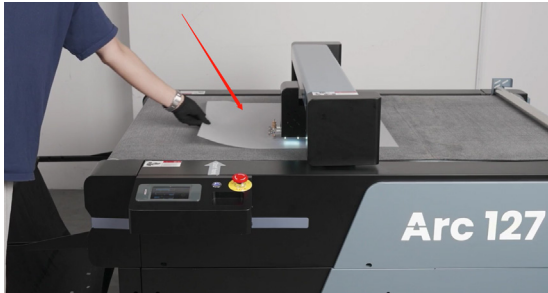
The goal is to achieve a moderate level of pressure that ensures a clean and precise cut. This balance not only enhances cutting efficiency but also minimizes material waste and prolongs the lifespan of the blade and equipment.

Blade Pressure Testing and Adjusting

01. Preparation

Prepare a waste film for blade testing and position it beneath Blade 1

TICK BOX WHEN DONE WITH STEP

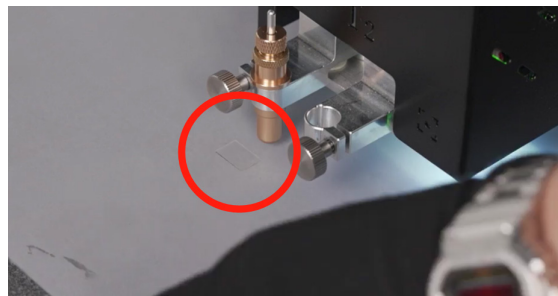
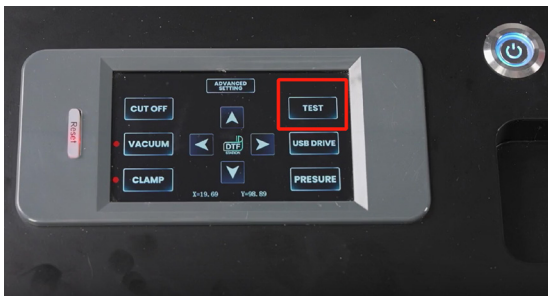


02. Initiating the Test

Navigate to the control panel and press the "TEST" button. This will activate Blade 1, causing it to cut into the material and leave a mark

As default, only Blade 1 will be engaged in the cutting process. The test button exclusively controls the cutting action of Blade 1. In this example, we will demonstrate the proper procedure for testing Blade 1 pressure parameters.

TICK BOX WHEN DONE WITH STEP



03. Evaluating the Cut

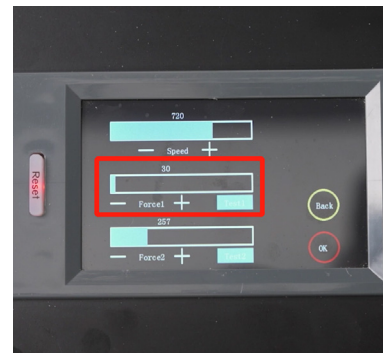
Remove the film and inspect the cut.

Incomplete cut: Indicates insufficient pressure

Navigate to "PRESSURE" settings interface.

- **Force 1: Blade 1 pressure control (default: 30)**
- **Force 2: Reserved for Blade 2 (currently inactive)**

TICK BOX WHEN DONE WITH STEP



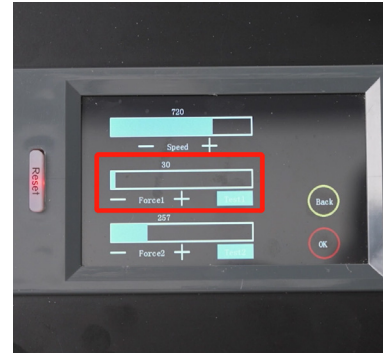
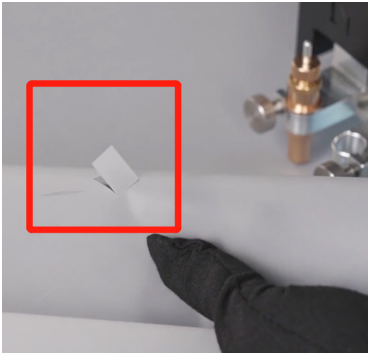
04. Adjusting the Pressure

TICK BOX WHEN DONE WITH STEP

Increment Blade 1 pressure to 40

Execute secondary test using "TEST 1" function

Notes: If the cut is satisfactory, maintain this pressure setting. Adjust the pressure as necessary, but always aim to use the minimum pressure required to achieve a clean cut.



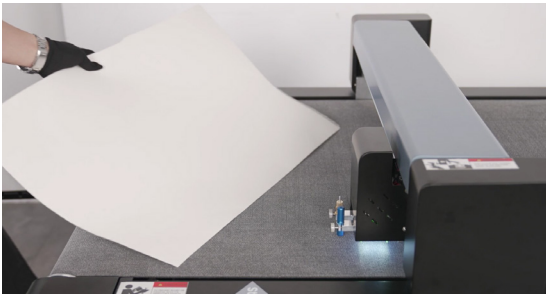
Blade 2 Pressure Testing and Adjusting

When modifying the system configuration to utilize Blade 2 as the primary cutting blade or when employing both Blade 1 and Blade 2 for a cutting operation, it is essential to perform pressure testing for Blade 2. This ensures consistent cutting performance across all active blades.

01. Preparation

TICK BOX WHEN DONE WITH STEP

Same as Blade 1. Prepare a waste film for blade testing and position it beneath Blade 2.



02. Initiating the Test

TICK BOX WHEN DONE WITH STEP

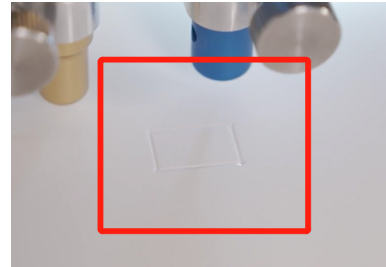
Same as Blade 1. Prepare a waste film for blade testing and position it beneath Blade 2.

03. Evaluating the Cut

TICK BOX WHEN DONE WITH STEP

Remove the film and inspect the cut.

- Force 1: Blade 1 pressure control (default: 100)
- Force 2: Reserved for Blade 2 (default: 75)



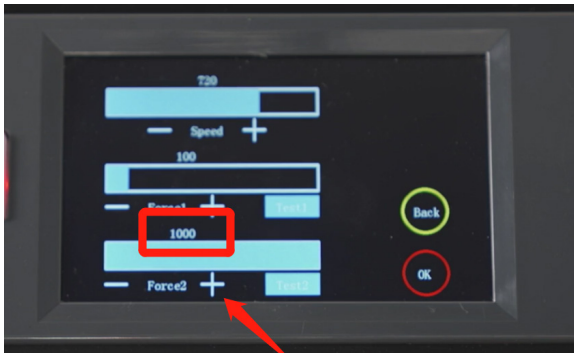
03. Adjusting the Pressure

TICK BOX WHEN DONE WITH STEP

Adjust Blade 2 pressure to the maximum value of **1000**.

Execute secondary test using "TEST 2" function.

A pressure level of 1000 ensures optimal performance for folding operations. For all non-folding blades (e.g., cutting blades), maintain a moderate pressure level as previously recommended.



General Recommendation:

- For cutting blades, always use the minimum effective pressure necessary to achieve the desired result.
- For folding blades, highest pressure setting is suggested to create a clearly visible indentation on the material.
- Regularly inspect blades and materials to ensure consistent performance and longevity of equipment.
- Replace the blades as needed
- If you need to replace the belt, please reach out to DTF STATION tech support for assistance.

How To Load Media on the Arc 127

This guide provides detailed instructions on properly loading both roll and sheet media onto the Arc 127 cutting machine. Please follow these steps carefully to ensure optimal performance and avoid potential damage to the media or the machine.

The Arc 127 is designed to cut materials with a thickness of **Less than 1mm**. Using materials thicker than this limit may result in **Blade Breakage, Accelerated Blade Wear, or Damage to the Media**.

If you are using a new type of media and are uncertain about its compatibility with the cutter, it is highly recommended to **Conduct a Blade Test** using a sample piece of the material. This will help determine whether the material can be cut effectively without causing harm to the blade or the machine.

For detailed instructions on properly testing the blade with new materials, please refer to the **Arc 127 Operation - Blade Test** section of this manual.

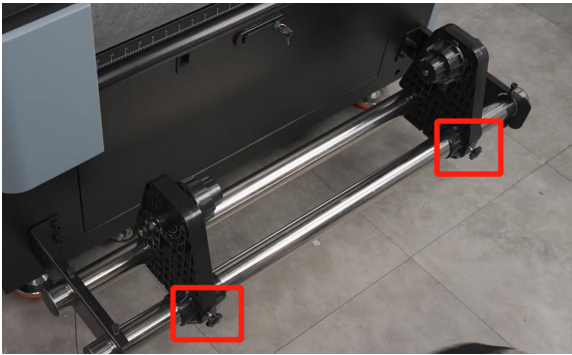
How To Load Media on the Arc 127- Roll Media

Before beginning the media loading process, it is essential to properly prepare the take-up reel and adjust its tension to ensure smooth and accurate cutting. Follow these steps carefully:

01. Loosen the Screws on the Take-Up Reel:

Start by loosening the screws on the take-up reel and positioning them close to each other. This step ensures that the reel is ready for tension adjustment.

TICK BOX WHEN DONE WITH STEP



02. Test and Adjust the Tension:

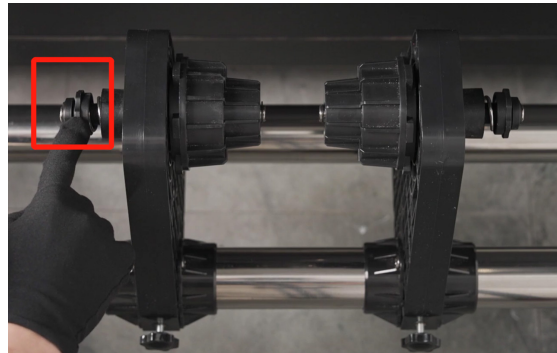
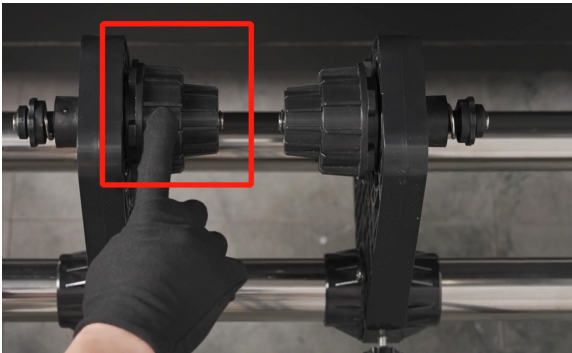
The goal is to achieve even and moderate tension on both sides of the take-up reel. To adjust the tension:

01. Turn the knob **Clockwise** to tighten the tension.

02. Turn the knob **Counterclockwise** to loosen the tension.

Ensure that the tension is balanced on both sides to prevent any issues during the cutting process.

TICK BOX WHEN DONE WITH STEP



03. Importance of Even Tension:

Uneven tension may cause the media to deviate during cutting, leading to media damage, cutting failures, or misalignment. Proper tension adjustment is critical for achieving consistent and accurate results.

TICK BOX WHEN DONE WITH STEP

04. Create Space for Loading the Media: TICK BOX WHEN DONE WITH STEP

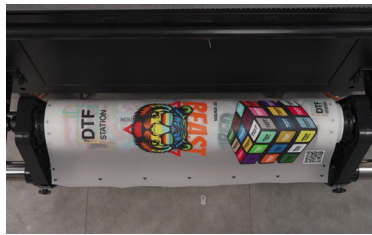
After adjusting the tension, ensure there is sufficient room on the take-up reel to accommodate the media. This step ensures smooth loading and prevents any obstructions during operation.

- By following these preparatory steps, you will ensure that the take-up reel is properly configured, reducing the risk of errors and enhancing the overall performance of the Arc 127 cutting machine. Always double-check the tension and alignment before proceeding to load the media.

DTF Roll Media Loading:

TICK BOX WHEN DONE WITH STEP

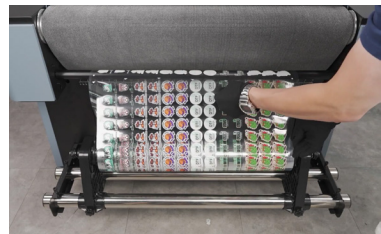
Ensure the DTF roll is loaded correctly to avoid cutting failures or media damage. Position the media core snugly in the take-up reel bracket to prevent **Misalignment** or **Movement**, and ensure the **Front Side** (printable side) faces outward during the loading process.



UV DTF Roll Media Loading:

TICK BOX WHEN DONE WITH STEP

Ensure the UV DTF roll is loaded correctly to avoid cutting failures or media damage. Position the media core snugly in the take-up reel bracket to prevent **Misalignment** or **Movement**, and ensure the **Front Side** (printable side) faces outward during the loading process.



The following steps can be used for loading DTF and UV DTF rolls.

05. Thread the Film Through the Tension Rod:

Carefully thread the film through the tension rod. Verify the film direction once again to confirm it is loaded correctly. **TICK BOX** WHEN DONE WITH STEP



06. Center the Media:

TICK BOX WHEN DONE WITH STEP

Utilize the scalers located on the Arc 127 to center the media as accurately as possible. One scaler is positioned at the back of the take-up reel, and another is on the cutter carriage. Misalignment may cause the film to deviate during cutting, leading to potential damage and cutting failures.



07. Securing the Take-Up Reel:

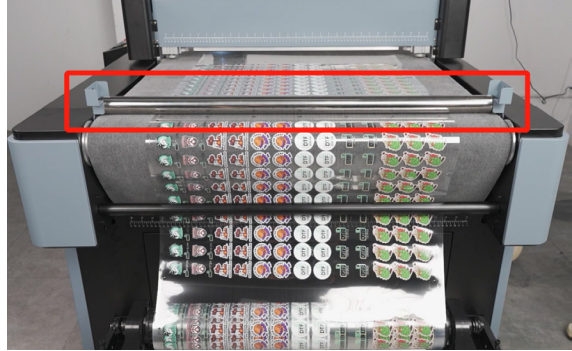
TICK BOX WHEN DONE WITH STEP

After aligning the film, turn the knob to secure the take-up reel, ensuring stability during operation. Verify the film is properly aligned and the media core is securely seated in the bracket, as any misalignment or looseness can cause media deviation, cutting errors, or material damage.



08. Secure the Film with the Tension Bar: TICK BOX WHEN DONE WITH STEP

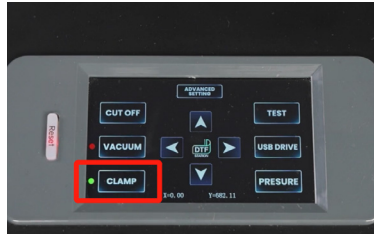
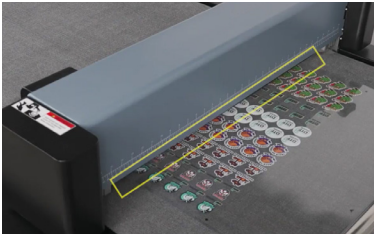
Position the tension bar on the belt to firmly secure the film in place. Ensure the media is flat and free of wrinkles or creases before placing it on the machine. Properly prepared sheets contribute to smoother operation and better cutting precision.



09. Engage the Carriage and Clamp the Film:

TICK BOX WHEN DONE WITH STEP

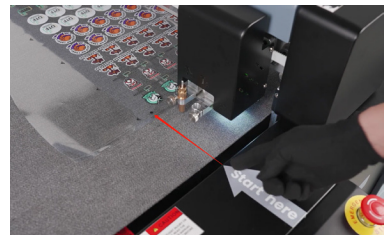
Navigate to the control panel and move the carriage behind the film. Press the CLAMP button to hold the film securely.



10. Align the Registration Mark

TICK BOX WHEN DONE WITH STEP

Use the Left button to move the film to the left until the first registration mark (the first black dot) aligns with the "START HERE" arrow.



How To Load Media on the Arc 127- Sheet Media

For the best results, it is suggested to use sheet media with dimensions of ***600mm by 600mm (24 inches by 24 inches)***. This size is optimized to work seamlessly with the Arc 127, ensuring high-quality cuts and minimizing the risk of alignment issues or cutting errors.

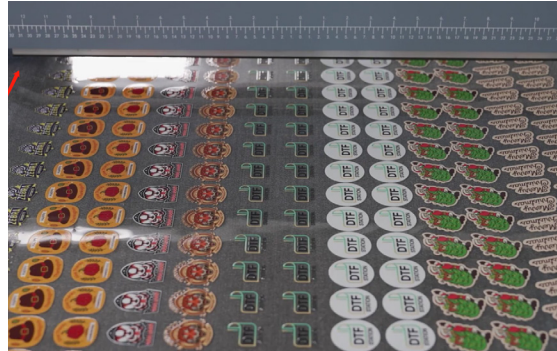
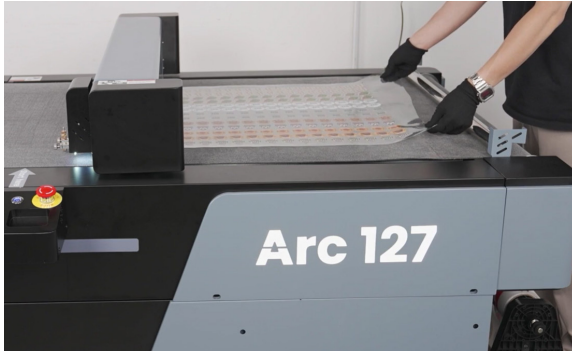
Using sheets within the recommended dimensions helps maintain consistent tension and alignment during the cutting process. Sheets that are too large or too small may result in ***Misalignment, Media Damage, or Cutting Failures.***

Ensure the sheet media is flat and free of wrinkles or creases before placing it on the machine. Properly prepared sheets contribute to smoother operation and better cutting precision.

01. Center the Media:

TICK BOX WHEN DONE WITH STEP

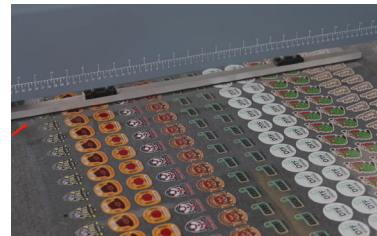
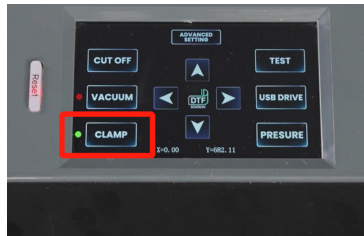
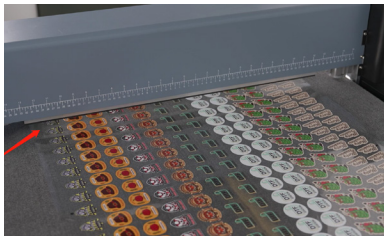
Align the sheet media as centrally as possible using the scaler on top of the machine. Proper alignment is crucial to prevent deviation during the cutting process, which could result in media damage or cutting failures.



02. Engage the Carriage and Clamp the Film:

TICK BOX WHEN DONE WITH STEP

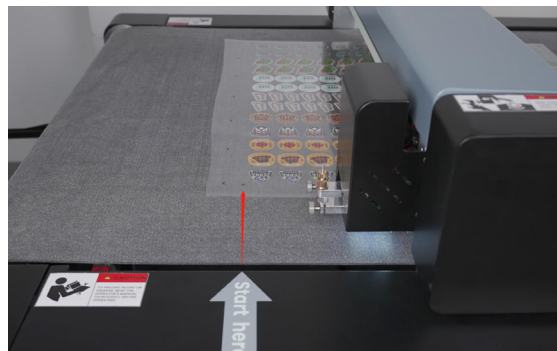
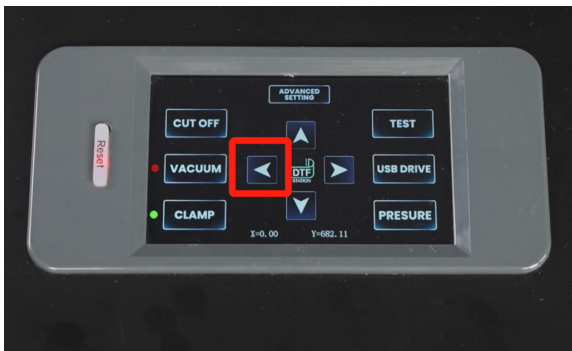
Proceed to the control panel and position the carriage behind the film. Press the CLAMP button to secure the film.



03. Align the Registration Mark:

TICK BOX WHEN DONE WITH STEP

Press the Left button to shift the film to the left until the first registration mark (the first black dot) is in line with the "START HERE" arrow.



How To Establish Connections Between the Arc 127 and PC

There are three methods available for establishing a connection between the Arc 127 and your personal computer, which include: USB Flash Drive, USB Port, and TCPIP Port. These components can be found within the accessory box provided with the Arc 127 cutter.

Among the available options, we highly recommend utilizing a USB flash drive for file cutting, as it represents the most dependable approach with the least likelihood of connection disruptions. Nevertheless, in instances where templates within Digirip are employed or when cutting segments shorter than 20 inches, both USB and Ethernet cable alternatives prove to be efficacious for streamlining your workflow, obviating the necessity for file storage on a USB flash drive.

Detailed instructions for each operation will be provided in the subsequent sections.

Using USB Flash Drive to Establish Connections Between the Arc 127 and PC

01. Locate the USB Flash Drive:

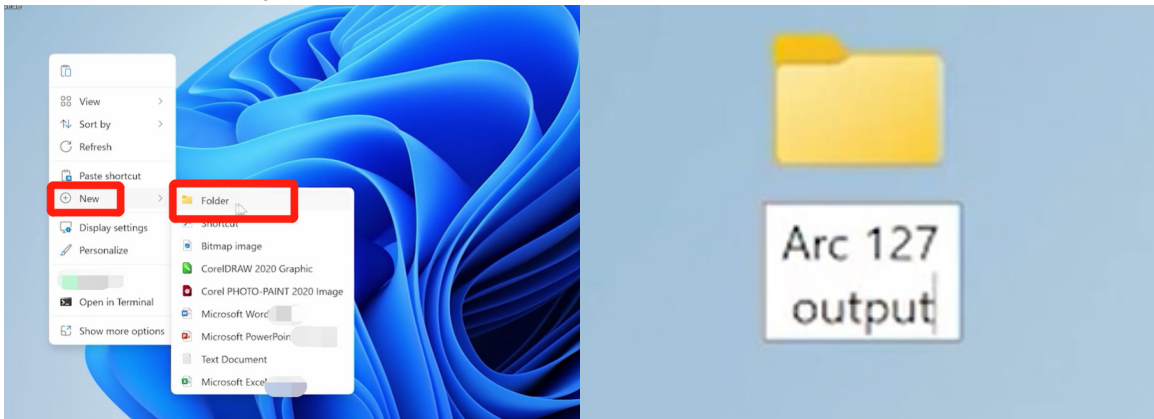
TICK BOX WHEN DONE WITH STEP



02. Create Output Folder:

TICK BOX WHEN DONE WITH STEP

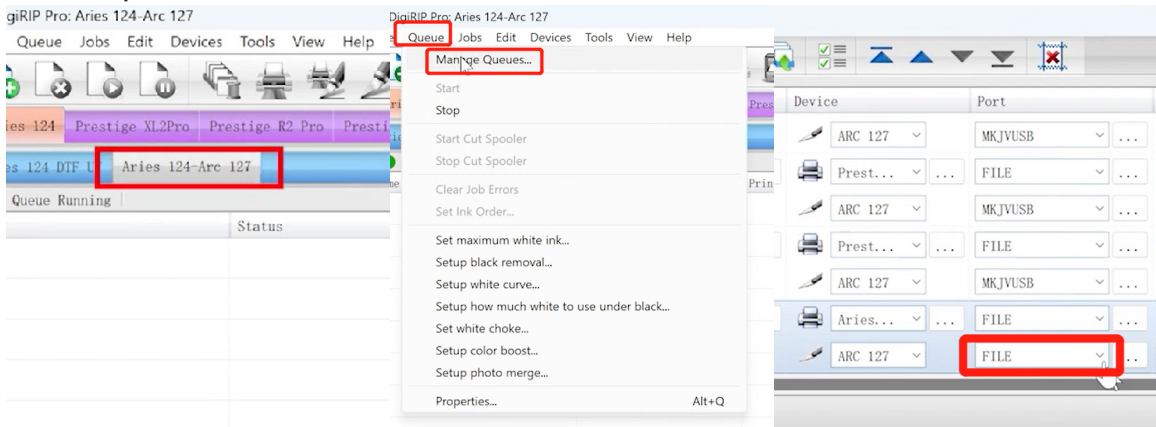
Begin by creating a dedicated folder on your Windows desktop to store Arc 127 output cut file.



03. Configure DigiRip Settings:

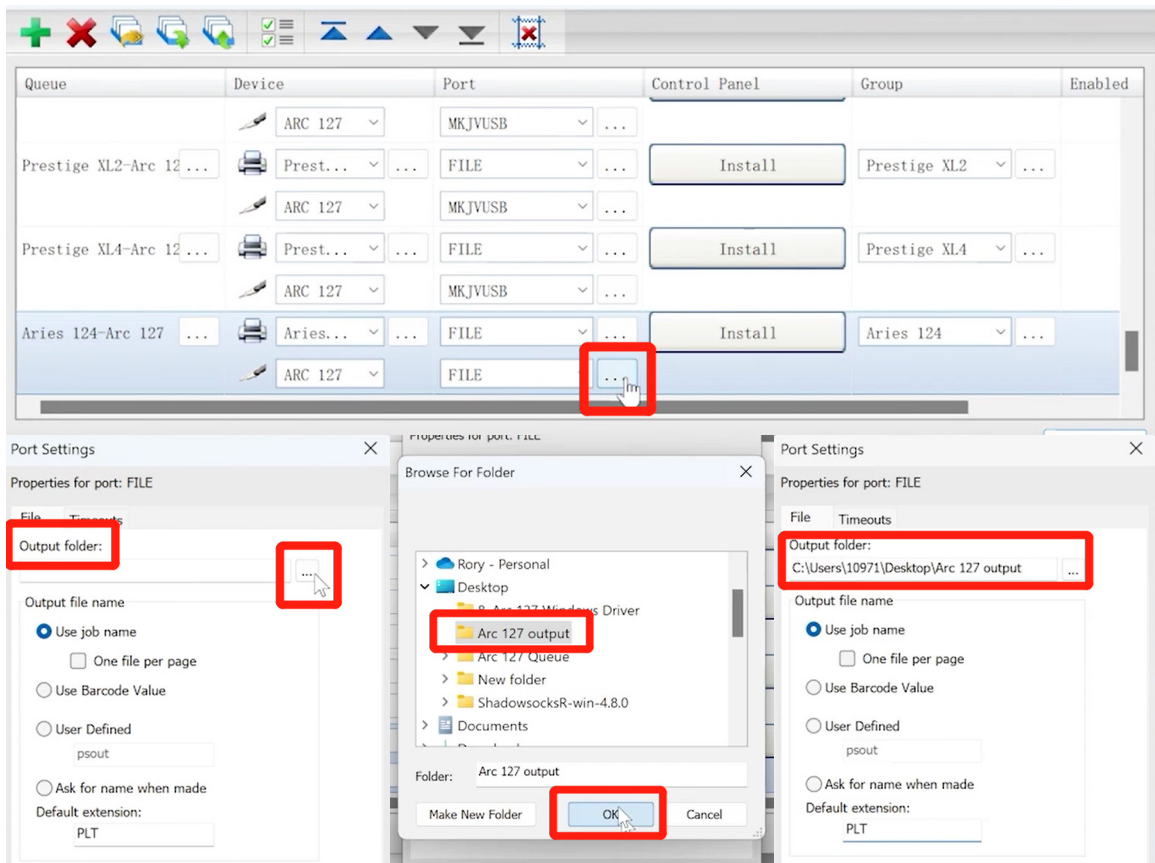
TICK BOX WHEN DONE WITH STEP

Open DigiRip and navigate to Queue > Queue Management. Set the Arc 127 port to FILE.



04. Configure DigiRip Settings follow up: **TICK BOX** WHEN DONE WITH STEP

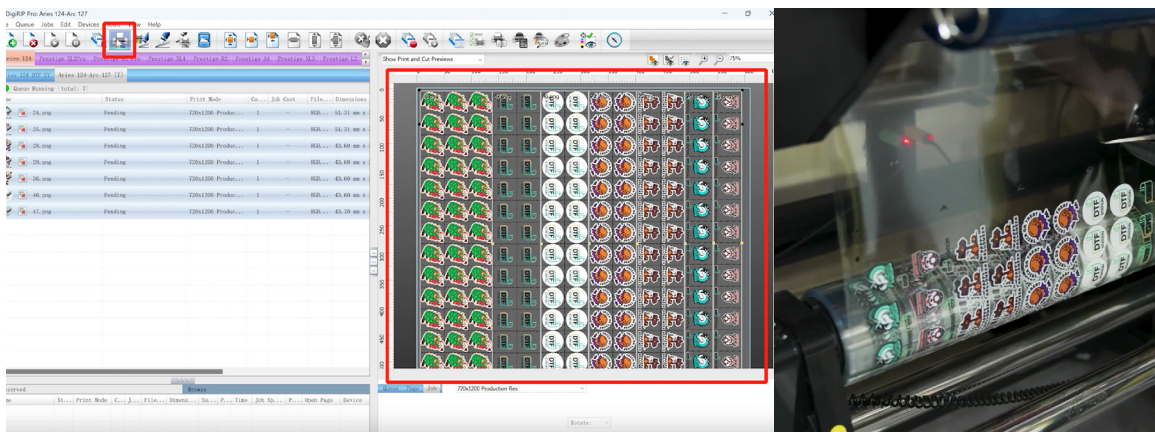
Press the the three dots (...). Designate the output folder you created as the destination for cut files. This configuration ensures all cut files are saved in PLT format to the specified folder.



05. Execute Printing Process:

TICK BOX WHEN DONE WITH STEP

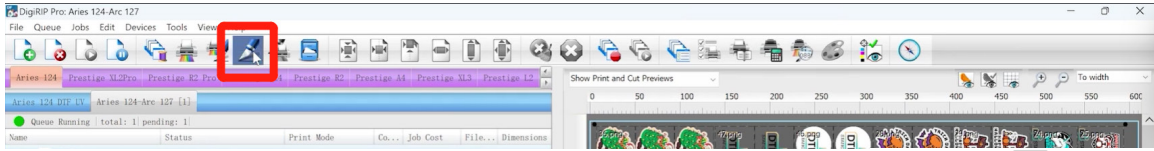
Upon importing your files and finalizing the layout, **Print** the job and have the film ready for cutting.



06. Generate Cut Files:

TICK BOX WHEN DONE WITH STEP

Select the printed file and click **Cut Job**. The cut file will be generated and automatically saved in the designated folder.



07. Transfer Files to USB Drive:

TICK BOX WHEN DONE WITH STEP

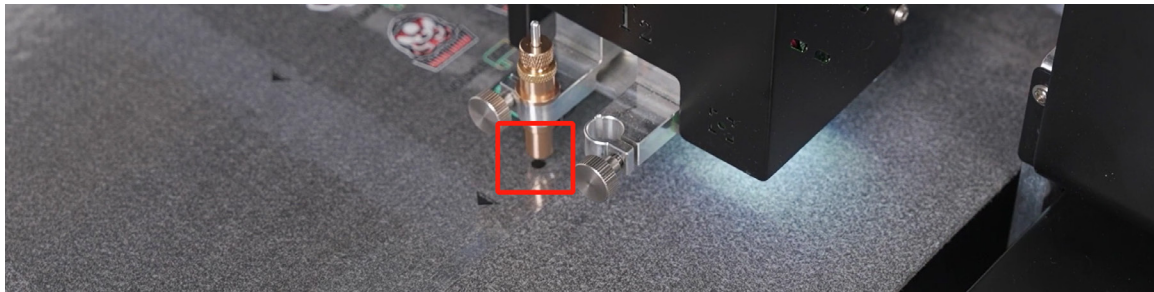
Open the folder to confirm the file has been saved correctly. Copy the generated cut file to a USB Flash Drive. Connect the USB Flash Drive to the cutter port.



07. Execute Cutting Process:

TICK BOX WHEN DONE WITH STEP

Manually position Blade 1 by pressing the UP, DOWN, LEFT, and RIGHT button on the screen to align with the first registration mark.



08. Execute Cutting Process follow up:

TICK BOX WHEN DONE WITH STEP

On the control panel, select USB Drive and click the three dots (...). On the control panel, select USB Drive and click the three dots (...) to find the cutting file. Manually position Blade 1 using the arrow buttons to align with the first registration mark. Select the file, click OK, and start the cutting process.



Using USB Port to Establish Connections Between the Arc 127 and PC

01. Locate the USB Flash Drive:

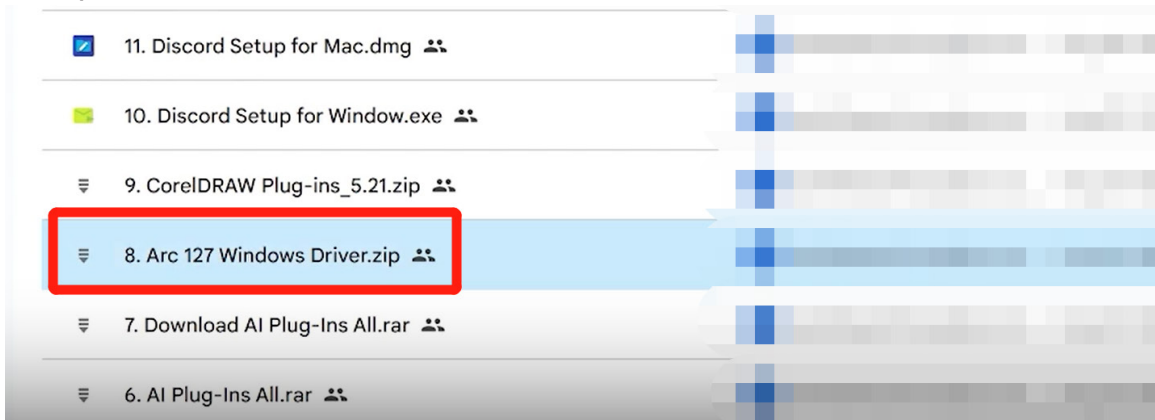
TICK BOX WHEN DONE WITH STEP



02. Install Windows Driver:

TICK BOX WHEN DONE WITH STEP

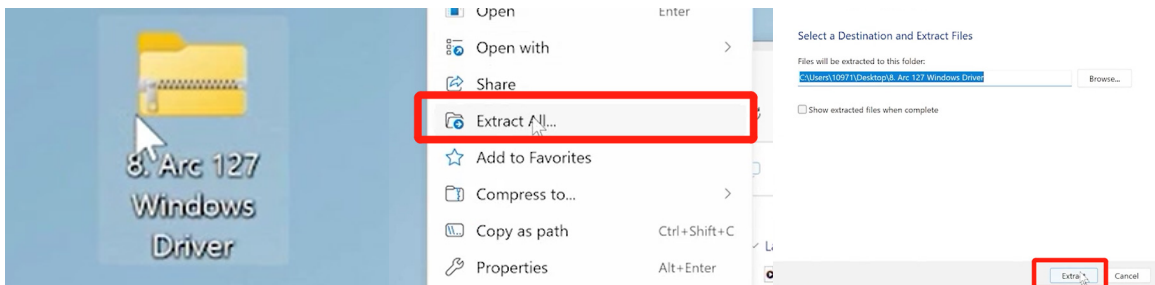
Access the USB flash drive or the Arc 127 Google Drive and locate the compressed file titled "Arc 127 Windows Driver."



03. Install Windows Driver follow up:

TICK BOX WHEN DONE WITH STEP

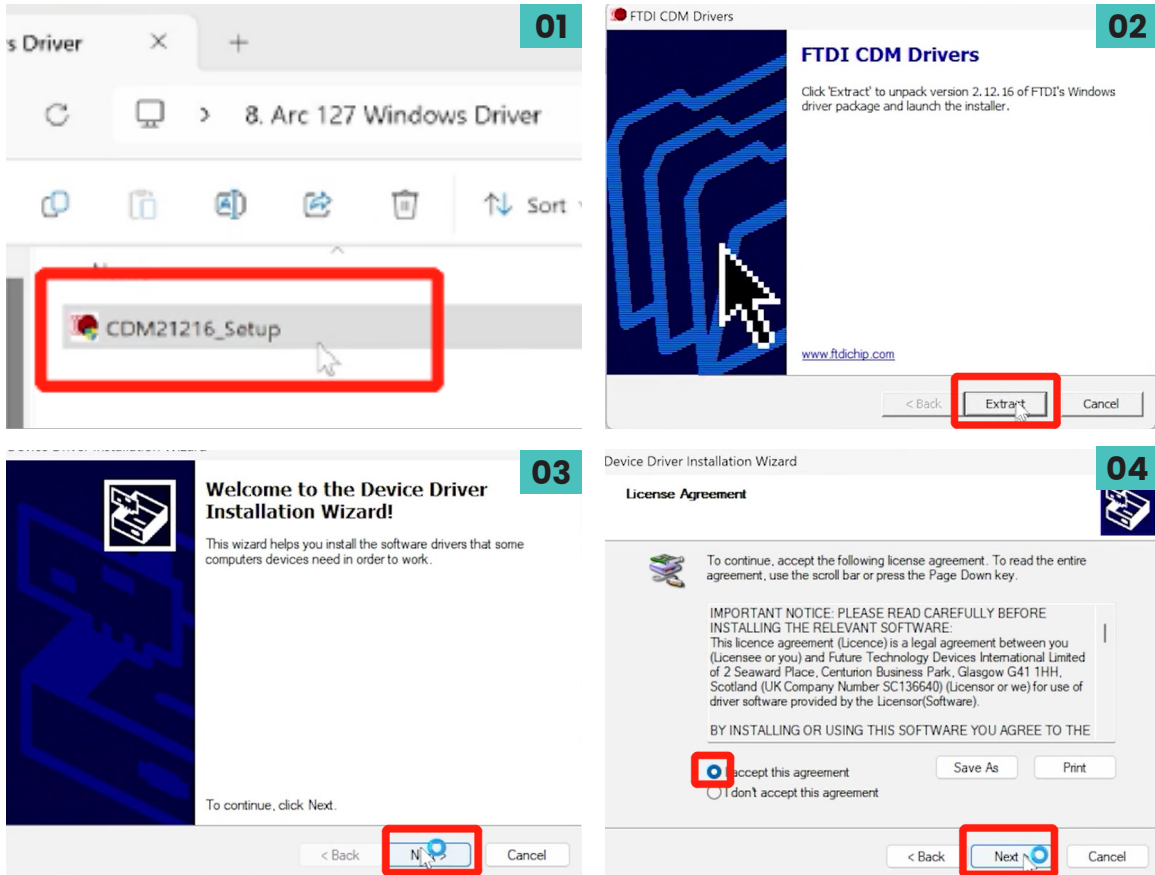
Download and extract the contents of the file to your device.



04. Install Windows Driver follow up:

TICK BOX WHEN DONE WITH STEP

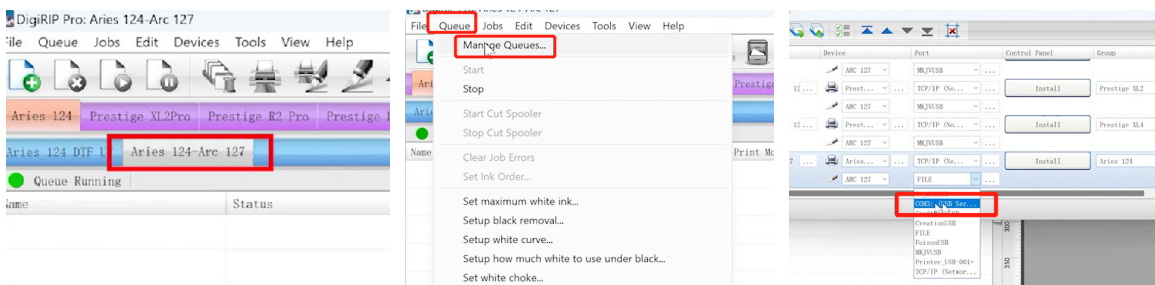
Open the Setup package, select "Extract," and proceed by following the on-screen instructions. Click "Next." Then check the box to accept the license agreement and click "Next. Once the installation is complete, hit "Finish" and the driver is ready to use.



05. Configure DigiRip Settings:

TICK BOX WHEN DONE WITH STEP

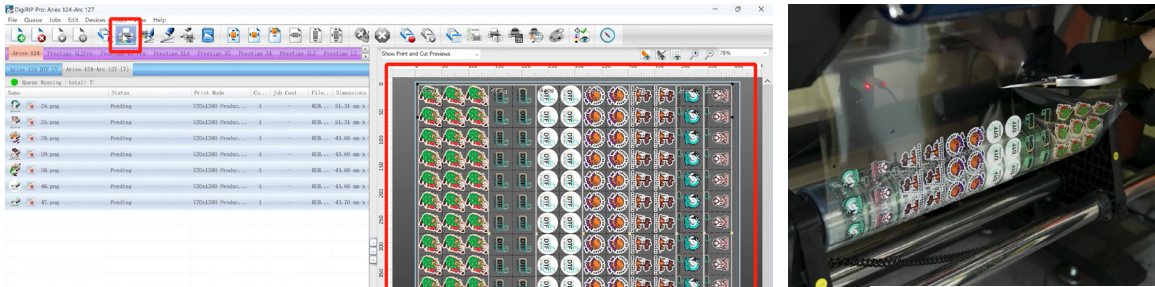
Next, open DigiRip:Locate the Arc 127 queue for your printer. Go to **Queue > Manage Queue**. Navigate to the Arc 127 port settings section. Upon successful installation of the driver, the "COM3" port should be visible. Proceed to select it.



06. Execute Printing Process:

TICK BOX WHEN DONE WITH STEP

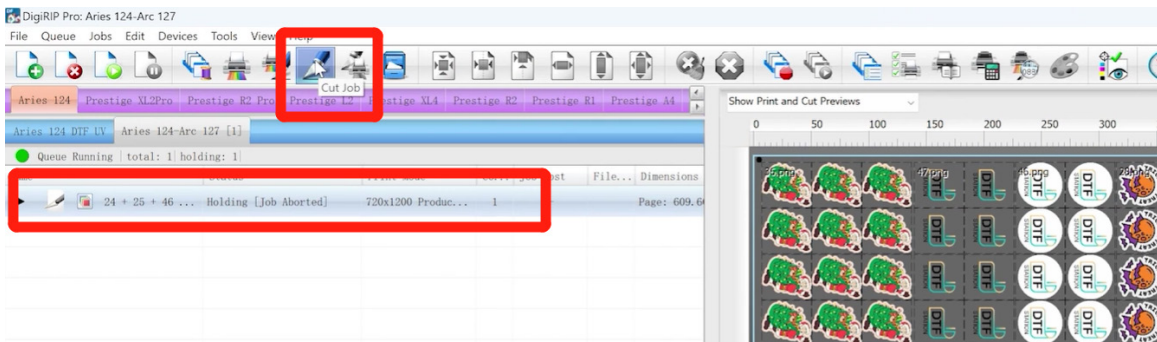
Upon importing your files and finalizing the layout, Print the job and have the film ready for cutting.



07. Execute Cutting Process:

TICK BOX WHEN DONE WITH STEP

Select the printed job, proceed to the Cut Jobs section.



08. Execute Cutting Process follow up:

TICK BOX WHEN DONE WITH STEP

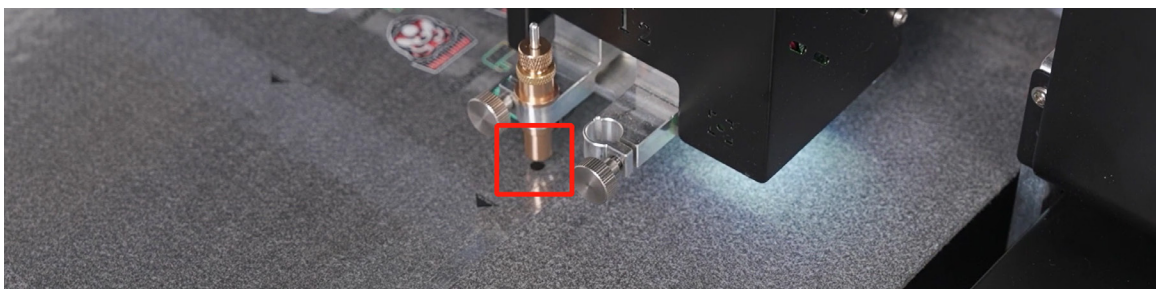
A dialog box will appear, instructing you to "Move the knife to the first registration mark."



09. Execute Cutting Process follow up:

TICK BOX WHEN DONE WITH STEP

Manually position Blade 1 by pressing the UP, DOWN, LEFT, and RIGHT button on the screen to align with the first registration mark. Subsequently, navigate back to DigiRip, select OK, and the cutting process will commence.



Using Ethernet Cable to Establish Connections Between the Arc 127 and PC

01. Locate the Ethernet Cable and TCP/IP Port:



TICK BOX WHEN DONE WITH STEP

02. Update the network setting

TICK BOX WHEN DONE WITH STEP

If you are utilizing an Ethernet cable, it is necessary to update the network and internet settings on your device. Please follow the steps outlined below:

1. Navigate to **Settings > Network and Internet > Ethernet.**

← Settings

TICK BOX WHEN DONE WITH STEP

Network & internet

WLAN Connected, secured

Properties Public network 5 GHz

Data usage 45.09 GB, last 30 d

Find a setting

Home

System

Bluetooth & devices

Network & internet

Personalization

Apps

Accounts

Time & language

Gaming

Accessibility

Privacy & security

Windows Update

Wi-Fi Connect, manage known networks, metered network On

Ethernet Authentication, IP and DNS settings, metered network

VPN Add, connect, manage

Mobile hotspot Share your internet connection Off

Airplane mode Stop wireless communication Off

Proxy Proxy server for Wi-Fi and Ethernet connections

2. Locate the **IPv4 Address** section and select **Edit**.

gs

TICK BOX WHEN DONE WITH STEP

Network & internet **Ethernet**

No internet

Authentication settings Edit

Metered connection
Some apps might work differently to reduce data usage when you're connected to this network Off

Set a data limit to help control data usage on this network

IP assignment:	Manual	Edit
IPv4 address:	192.168.127.55	
IPv4 mask:	255.255.255.0	

DNS server assignment: Automatic (DHCP) Edit

Link speed (Receive/Transmit): 100/100 (Mbps) Copy

Link-local IPv6 address: fe80::d0d1:1737:dd07:414d%4

IPv6 DNS servers:
fec0:0:0:ffff::1%1 (Unencrypted)
fec0:0:0:ffff::2%1 (Unencrypted)
fec0:0:0:ffff::3%1 (Unencrypted)

IPv4 address: 192.168.127.55

Manufacturer: Realtek

Description: Realtek USB GbE Family Controller #2

Driver version: 11.15.327.2024

Physical address (MAC): 6C-1F-F7-15-C5-B6

3. Update the settings as demonstrated in the accompanying video:

- **Edit IP settings:** Manual
- **IPv4:** ON
- **IP Address:** 192.168.0.1
- **Subnet Mask:** 255.255.255.0
- **Gateway:** 192.168.0.233
- **Preferred DNS:** 114.114.114
- **DNS over HTTPS:** OFF

Edit IP settings **TICK BOX** WHEN DONE WITH STEP

Manual

IPv4 On

IP address
192.168.0.1

Subnet mask
255.255.255.0

Gateway
192.168.0.233

Preferred DNS
114.114.114.114

DNS over HTTPS
Off

Alternate DNS

Save Cancel

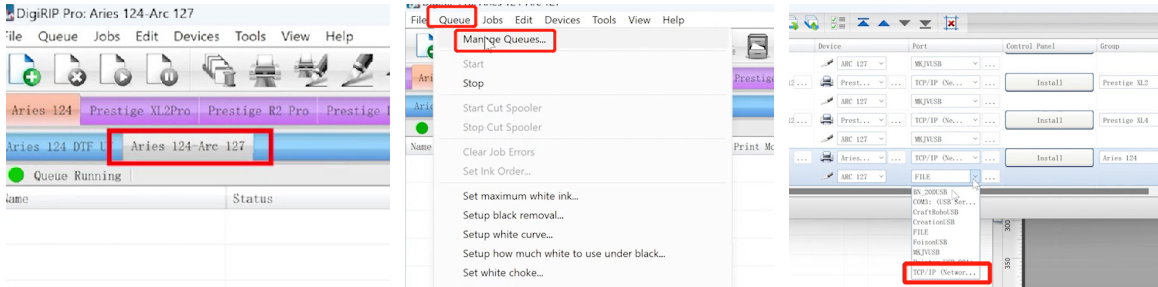
4. Ensure to **Save** the settings before exiting.TICK BOX WHEN DONE WITH STEP

31

03. Configure DigiRip Settings:

TICK BOX WHEN DONE WITH STEP

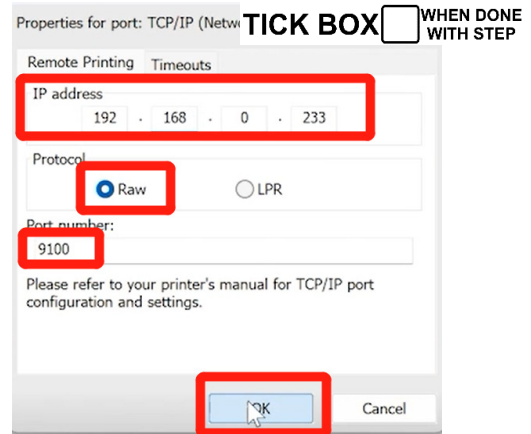
Next, open DigiRip:Locate the Arc 127 queue for your printer. Go to **Queue > Manage Queue**. Scroll down and choose **TCP/IP** as the port type.



04. Execute Printing Process:

Configure DigiRip Settings. Next, Input the following details in the port settings:

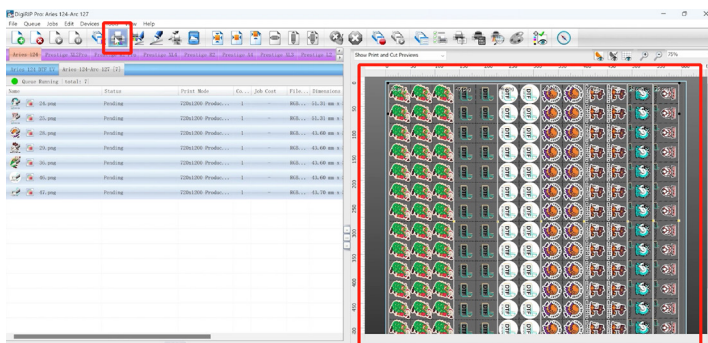
- **IP Address: 192.168.0.233**
- **Protocol: Raw**
- **Port Number: 9100 (default)**
- **Click OK to confirm.**



05. Execute Cutting Process:

TICK BOX WHEN DONE WITH STEP

Upon importing your files and finalizing the layout, Print the job and have the film ready for cutting.

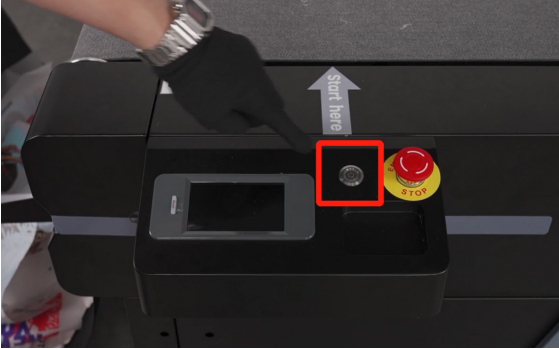


ARC 127 MAINTENANCE

EOD Maintenance:

TICK BOX WHEN DONE WITH STEP

Start by turning off the main power switch and unplugging the power cord to shut down the machine.

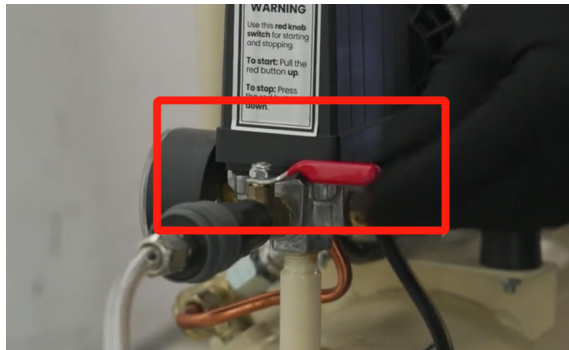


01. Remove the air tube:

TICK BOX WHEN DONE WITH STEP

Turn off the air compressor by pressing down its main power switch. Close the air outlet valve and unplug the compressor's power cord.

Pull the connector switch backward and remove the air tube. This helps release any air inside the machine, preventing water buildup and potential damage.



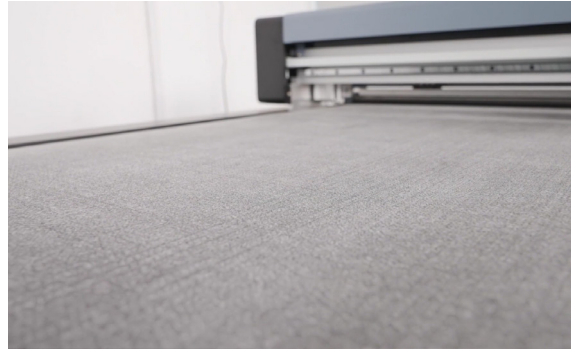
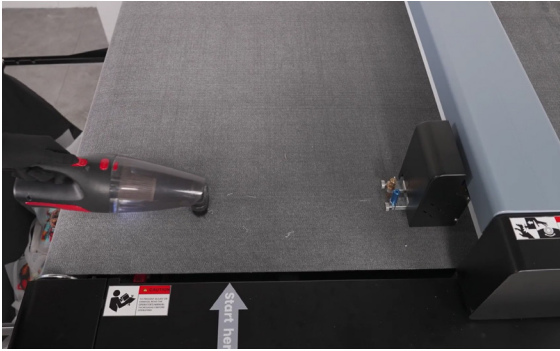
02. Maintain the blade and blade holder: TICK BOX WHEN DONE WITH STEP

Loosen the screw holding the blade holder. Remove any scraps or debris around the blade and blade holder, and clean them with alcohol.

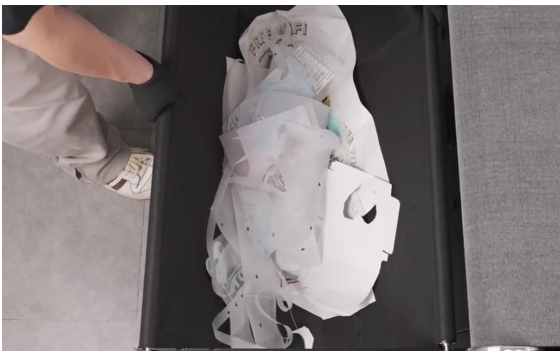


03. Clean the cutting platform: TICK BOX WHEN DONE WITH STEP

Use a vacuum cleaner to clean the cutting platform



04. Dispose of the waste film from the collector basket and cover the machine. TICK BOX WHEN DONE WITH STEP

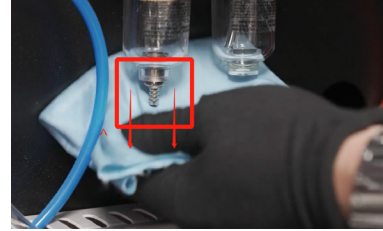
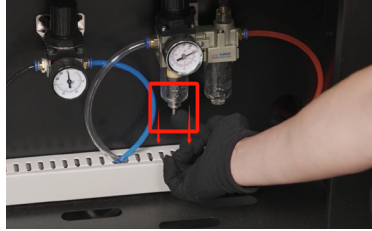
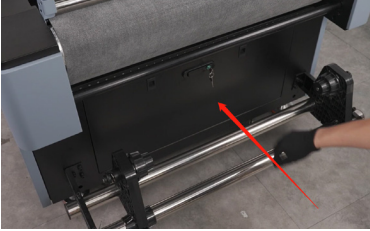


Weekly / As needed Maintenance:

01. Clean the filter on the back:

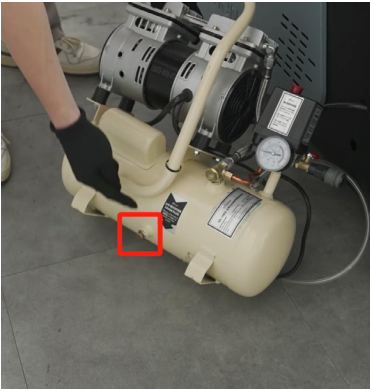
TICK BOX WHEN DONE WITH STEP

Head to the take-up reel side and remove the machine cover. Locate the oil-water filter on the right side. You'll notice a cylinder pull under the filter, and there may be water buildup visible in the glass. Pull this ring downward with a paper towel to remove the excess water. Be sure to perform this step weekly.



02. Drain the water inside the air compressor:

Underneath the air compressor, you'll find an air receiver drain plug. Similar to the filter on the cutter, water may build up inside the compressor. Unscrew the plug to drain the water, then tighten it back into position once the draining is complete.



TICK BOX WHEN DONE WITH STEP