

# Spot color fidelity for every type of print

Your ability to reproduce your clients' colors correctly for their logos, designs, and graphics, greatly impacts their brand, and their image. With the EFI™ Fiery® Spot Color Option, you can produce the right spot colors every time, quickly and easily.

## Great out-of-the-box spot color matching

Fiery proServer and Fiery XF have complete color libraries from the leading spot color systems providers — PANTONE®, HKS®, Toyo®, and DIC® — built in. This means spot and brand color matching is automatic and easy, whatever the substrate. Default, and custom spot colors can also be adjusted, and saved into libraries, to meet all your different customers' needs.

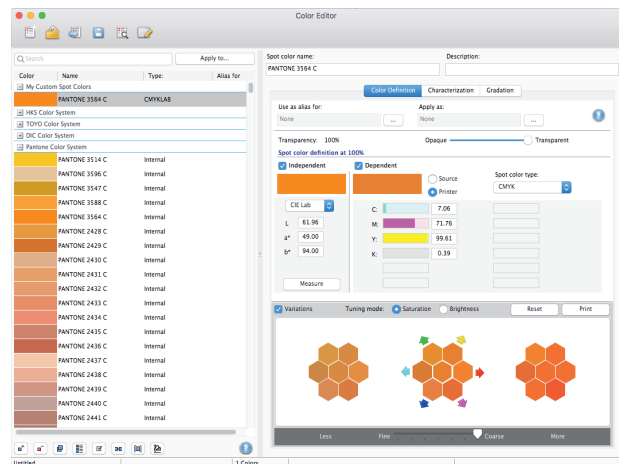
## Sophisticated control when it's needed

To satisfy the demands of even the toughest print requirements, this option also offers advanced features such as the precise characterization of spot color solids and tints by measurement, definition of their transparency, and control over gradation curves. Add to that the ability to produce customized swatch books, plus choose a spot color variation by visual closeness, all bases are covered to get the best possible results for every customer and job type.

## Easy spot color mapping and routing

Multi-channel jobs are automatically analyzed and their channels correctly routed where channel names in reference profiles, match channel names within a job.

Flexible spot color routing functionalities ensure that any spot color can be easily routed to another spot color, or specific printer ink such as white, gloss, or metallic. As a creative tool, or used as a last-minute correction tool, this feature eliminates the need to do spot color changes in DTP applications.



*Built-in spot colors can be adjusted by measurement or visually, and their characteristics such as transparency defined.*

# Spot Color Option features

## General

- Built-in spot color libraries for PANTONE®, PANTONE® Plus, PANTONE Formula Guide V4, HKS®, HKS® 3000+, Toyo®, and DIC® built-in
- Unlimited number of spot colors supported per job
- Spot color measurement out of application
- CMYK based spot color editing for visual fine-tuning
- Definition of custom spot colors

## Visual spot matching

- Variations feature for print-based visual matching
- Swatch book printing

## Spot color definition

- Full tones and shades, manual and measurement based
- Definition in L\*a\*b\* (measured and manually), CMYK/CMYKOG/CMYKRGB (manually in %) and inkjet CMYK/CMYKOG/CMYKRGB (pure printer inks, manually in %)
- Definition of spot color transparency per spot color, and per spot color table
- Definition of gradation curve in percent, combinable with measured characterization data

## Spot colour mapping and routing

- Alias function (link spot color to another pre-defined spot color)
- Process colors Cyan, Magenta, Yellow, Black can be defined as, or replaced by spot colors (e.g. Warm Red replaces Magenta)
- Automated color mapping of multi-channel jobs
- Flexible spot color routing to spot colors or printer inks (e.g. white, glossy, metallic)

## Quality control

- Spot color verification with definable tolerances
- Spot color optimization on a per spot color, or per job basis

## EFI supported devices

- ES-1000
- ES-2000
- ES-3000

## EFI fuels success.

We develop breakthrough technologies for the manufacturing of signage, packaging, textiles, ceramic tiles, and personalized documents, with a wide range of printers, inks, digital front ends, and a comprehensive business and production workflow suite that transforms and streamlines the entire production process, increasing your competitiveness and boosting productivity. Visit [www.efi.com](http://www.efi.com) or call 650-357-3500 for more information.



Nothing herein should be construed as a warranty in addition to the express warranty statement provided with EFI products and services.

AutoCal, Auto-Count, Best Eye, ColorGuard, ColorPASS, ColorRight, ColorWise, Command WorkStation, Cretachrom, Cretaprint, the Cretaprint logo, Cretaprinter, Cretaroller, Digital StoreFront, DocBuilder, Dynamic Wedge, EDOX, EFI, the EFI logo, Electronics For Imaging, EPCount, EPPhoto, EPRegister, EPStatus, Estimate, FabriVU, Fast-4, FASTRIP, FASTDRIVE, Fiery, the Fiery logo, Fiery Compose, Fiery Driven, the Fiery Driven logo, Fiery DesignPro, Fiery Edge, Fiery Impose, Fiery ImageViewer, Fiery Intensify, Fiery JobExpert, Fiery JobFlow, Fiery JobMaster, Fiery Navigator, Fiery Prints, the Fiery Prints logo, FreeForm, GameSys, Hagen, InkIntensity, Inkware, IQ, iQuote, LapNet, Lector, Logic, MarketDirect StoreFront, MarketDirect VDP, MarketDirect Cross Media, Metrics, Metrix, MicroPress, Monarch, Monarch Planner, OneFlow, Optima, Optitex, Organizing Print, Pace, Pecas, Pecas Vision, PC-Topp, PressVu, PrinterSite, PrintFlow, PrintMe, the PrintMe logo, PrintSmith, PrintSmith Site, PrintSmith Vision, PrintStream, Profile, Process Shipper, Prograph, PSI, PSI Flexo, Radius, RIPChips, RIP-While-Print, Spot-On, Spot Pro, Synchro 7, Technique, UltraPress, UltraTex, UltraVu, UV Series 50, VisualCal, VUTEk, the VUTEk logo, and WebTools are trademarks or registered trademarks of Electronics For Imaging, Inc. and/or its wholly owned subsidiaries in the U.S. and/or certain other countries.

All other terms and product names may be trademarks or registered trademarks of their respective owners, and are hereby acknowledged.