

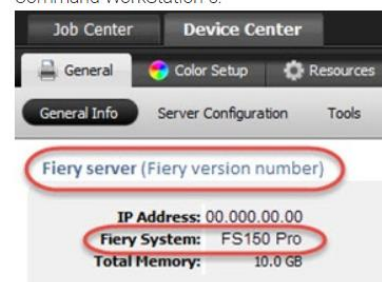
## Fiery JobFlow Installation Guide

Options for [Fiery® JobFlow™](#) software installation vary by the type of Fiery server you own.

- For Fiery FS200 Pro or newer external servers, install Fiery JobFlow software directly on the Fiery server.
  - You may also choose to install Fiery JobFlow on a separate Windows computer instead of directly on the Fiery server.
  - Most Fiery FS200 Pro and newer servers come with JobFlow Base (the free version) pre-installed. If this is the case, please proceed to step 4 below.
- For older Fiery external servers (FS150 Pro, FS100 Pro, System 10, or System 9R2), install Fiery JobFlow on a separate Windows computer.
- For Fiery XF 7 or newer servers, install Fiery JobFlow on a separate Windows computer.
- For all embedded Fiery servers, install Fiery JobFlow software on a separate Windows computer. You must have the optional [Fiery Productivity Package](#) (Fiery FS350 and prior) or the [Fiery Automation Package](#) (Fiery FS400 and above) installed and enabled for the Fiery server to connect to Fiery JobFlow.

### Check which Fiery server you have:

Command WorkStation 5:

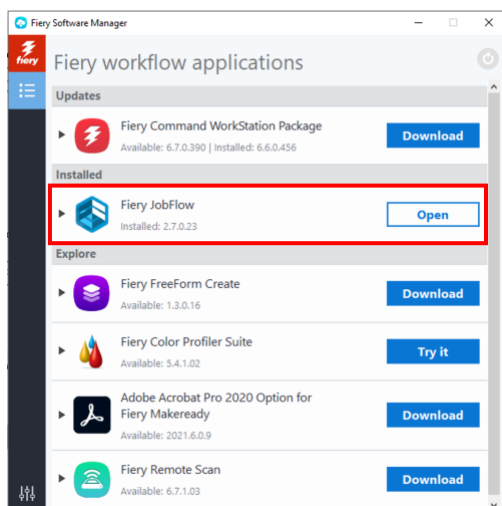


Command WorkStation 6:



When JobFlow is installed on a separate Windows computer or on a Fiery server, you must also install Fiery Command WorkStation® on the same computer/server. To make full use of the Impose module in Fiery JobFlow, Fiery Impose must be installed and licensed on the same Windows computer or Fiery server.

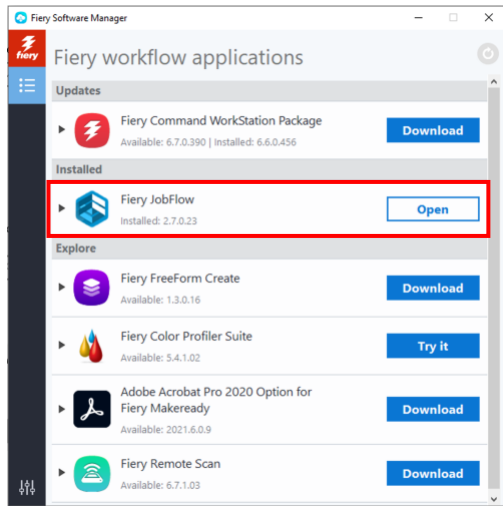
### How to install Fiery JobFlow:



1. To be able to download and install Fiery JobFlow, you need Fiery Software Manager. If you don't already have it, you can download it [here](#).

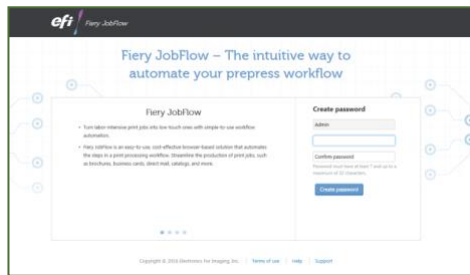
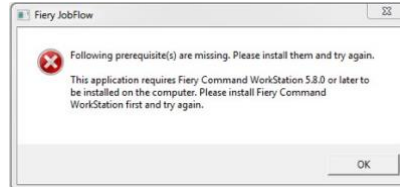
Once Fiery Software Manager is installed, open it and click on the Fiery JobFlow Download button.

# Fiery JobFlow installation guide

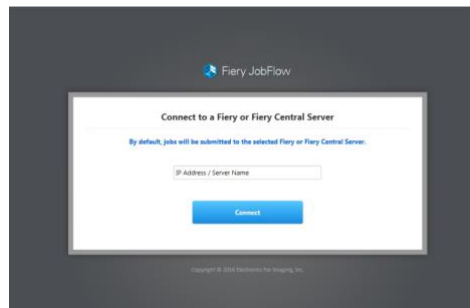


- Once the download is completed, click on the Install button, and follow the instructions. Upon successful installation, Fiery JobFlow will create a shortcut on your desktop.

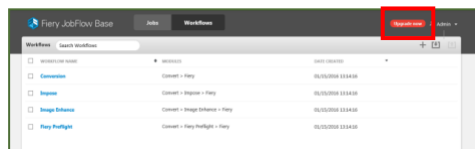
**IMPORTANT:** Fiery Command WorkStation must be installed prior to installing Fiery JobFlow. Otherwise, you will get this error message:



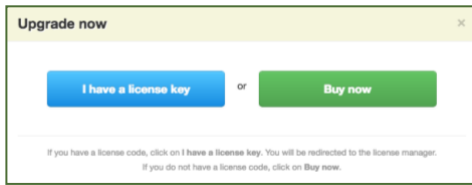
- Double-click on the Fiery JobFlow shortcut on your desktop and create your login for Fiery JobFlow. The default username is Admin. Create a password that meets the requirements and click on Create password.



- Enter the IP address or server name of your Fiery server to connect it as the default output device.



- You are now logged in to the free version, Fiery JobFlow Base. If you have a license code for the paid version or for a 30-day free trial, click on the Upgrade now button.



6. Click on the “I have a license key” button. Follow the instructions to enter your license activation code.

Start building your own workflows or download and import ready-to-use workflows from the Fiery JobFlow Library at [resources.efi.com/JobFlow/Library](https://resources.efi.com/JobFlow/Library).



### **Enfocus PitStop Pro**

[The Fiery JobFlow 30-day free trial](#) also includes a default library of Enfocus PitStop Pro resources.

#### **Optional**

If you would like to create your own Enfocus PitStop Pro resources, download the Enfocus PitStop Pro installer from the links below and follow the activation process:

#### **Mac:**

<http://download.efi.com/jobflow/enfocuspitstop/mac>

#### **Windows:**

<http://download.efi.com/jobflow/enfocuspitstop/windows>

**Note:** If you purchase the full version of Fiery JobFlow, you will also get a license for Enfocus PitStop Pro.

EFI™ is a global technology company, leading the worldwide transformation from analog to digital imaging. We are passionate about driving customers' business growth with a scalable portfolio of products, solutions, services, and world-class partnerships for the manufacturing of signage, packaging, textiles, ceramic tiles, building materials, commercial print, and personalized documents with a wide range of printers, inks, digital front ends, and workflow software. They work together to increase profits, cut costs, improve productivity, and optimize efficiency – job after job, year after year. Learn more at [www.efi.com](http://www.efi.com).



Nothing herein should be construed as a warranty in addition to the express warranty statement provided with EFI products and services.

ColorGuard, ColorRight, Command WorkStation, ColorWise, EFI, the EFI logo, Electronics For Imaging, EFI Fiery, Fiery, the Fiery logo, Fiery Compose, Fiery Driven, the Fiery Driven logo, Fiery Edge, Fiery Essential, Fiery HyperRIP, Fiery Impose, Fiery Impress, Fiery ImageViewer, Fiery Intensify, Fiery JobExpert, Fiery JobFlow, Fiery JobMaster, Fiery Prep-it, Fiery Prints, the Fiery Prints logo, Fiery TrueBrand, FreeForm, MicroPress, IQ, PrintMe, RIPChips, RIP-While-Print, Spot-On, Spot Pro, and WebTools are trademarks or registered trademarks of Electronics For Imaging, Inc. and/or its wholly owned subsidiaries in the U.S. and/or certain other countries. All other terms and product names may be trademarks or registered trademarks of their respective owners and are hereby acknowledged.