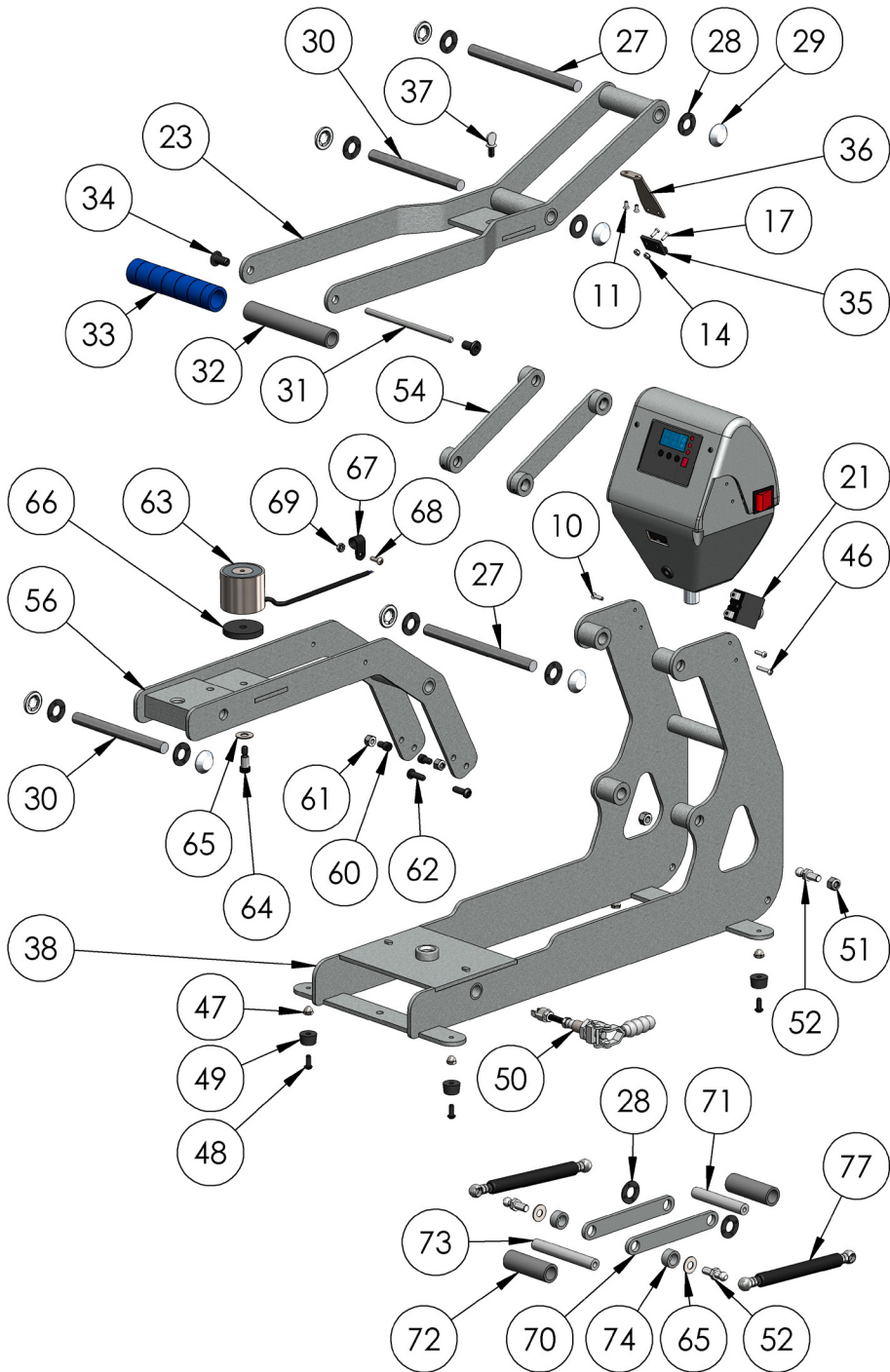


STX Housing

#	PART#	DESCRIPTION	QTY.
1	4-1172-S	Control Housing, STX	1
3	1-2018-1	Controller Overlay, STX	1
4	1-2105	Grommet, 9/32" ID 3/8" OD	2
5	3-1011-235	Screw, Sheet Metal #6 x 1/2"	6
6	2-1006-50	Nut, #6-32 Hex with Lockwasher	9
7	3-1011-130	Screw, Pan Phillips #4-40 x 1"	2
8	1-1759	Power Inlet	1
9	1-2087	Power Switch	1
10	3-1011-19	Screw, Machine #6-32 x 1/2"	7
11	3-1011-25	Screw, Machine #6-32 x 1/4"	5
12	1-1353	Conduit Fitting, 1/2" Topaz Straight Twist-On	1
13	Kit 3-6945	Controller Kit, STX	1
14	2-1006-51	Nut, #4-40 with Tooth Washer	8
15	2-1661	Controller Bracket, STX MAXX	1
16	1-1059	TRIAC	1
17	3-1011-22	Screw, Machine #4-40 x 3/8"	6
18	1-1290	Terminal Block, 5 Contact High Voltage	1
20	1-1211	Proximity Switch	1

STX Legacy Parts

#	PART#	DESCRIPTION	QTY.
200	2-1671	120V Locking Power Cord	1
201	1-2186	220V Power Cord	1
202	2-1672	230V European Locking Power Cord	1
203	1-1279	Lower Platen Spacer	1
204	KIT 3-6924	Platen Lift Kit	1
205	1-2367	Quick Change Keyway (Old Style)	1
206	3-1011-127	Screw, Machine #8-32 x 3/8" Black Oxide	2
207	1-1068	Heater Wire (Not Shown)	1



STX20 & STX16 Base, 120V

#	PART#	DESCRIPTION	QTY.
21	1-1331	Circuit Breaker 20A (STX XF XRF)	1
23	KIT 3-6930	Handle Assembly STX	1
27	1-2094	Steel Pin 1/2" D x 6.45"	2
28	1-1048-3	Washer, 1/2" Nylon	10
29	1-1107-1	Hub Cap 1/2"	8
30	1-2093	Steel Pin, 1/2" x 5.375"	2
31	1-1042-1	All Thread Pin	1
32	1-2096	PVC Spacer 1/2 I.D. x 5"	1
33	1-2115	Blue Foam Grip	1
34	2-1006-2	JCN - NUT	2
35	1-1219	Magnet	1
36	1-2085	Magnet Bracket (STX)	1
37	3-1011-232	Shipping Bolt (Thumb Screw), 1/4"-20 x 1/2"	1
38	KIT 3-6931	Base, STX 16x20, 16x16, 11x15	2
46	3-1011-252	Screw, Pan Phillips #6-32 x 3/4"	1
47	3-1011-182	Acorn Nut 10-32	4
48	3-1011-164	Screw, Button Socket Head #10-32 x 1/2"	4
49	1-1256	Rubber Foot	4
50	1-2332	Quick Release Clamp, Manual Presses	1
51	2-1006-20	Nut, Hex Nylok 5/16"-18	2
52	1-1939	Ball Stud 10mm	4
54	KIT 3-6905	Pressure Link STX	2
56	KIT 3-6903	Adjustment Arm Kit, STX	1
60	3-1011-215	Soc HD Cap Screw 1/4-20 x 3/8 "	2
61	2-1006-7	Nut, Hex 1/4"-20 Nylok	2
62	3-1011-106	Screw, Button Socket Head 1/4"-20 X 3/4"	2
63	1-1945-1	Electromagnet	1
64	3-1011-233	Screw, Shoulder 5/16" x 1/2" w/ 1/4"-20 Thread	1
65	2-1006-46	Washer, 5/16" SS	3
66	1-2104	Silicone Pad, 5/16" ID x 1-3/4" OD x 1/4" T	1
67	1-1105	Clamp, Cable 7/16" Black	1
68	3-1011-159	Screw, Machine #8-32 x 1/2"	1
69	2-1006-52	Nut, Hex #8-32 w/ Tooth Washer	1
70	KIT 3-6906	Bridle Links STX	2
71	1-2091	Pin, 1/2" x 3" w/ 1/4-20 Threads	1
72	1-2098	PVC Spacer 1/2 " I.D.x 2.48	2
73	1-2092	Pin, 1/2" x 3-5/8" w/ 5/16"-18 Threads	1
74	1-2114	Steel Spacer	2
77	1-2243	Gas Spring 16x20 & 16x16	2

STX20 & STX16 Base, 220V

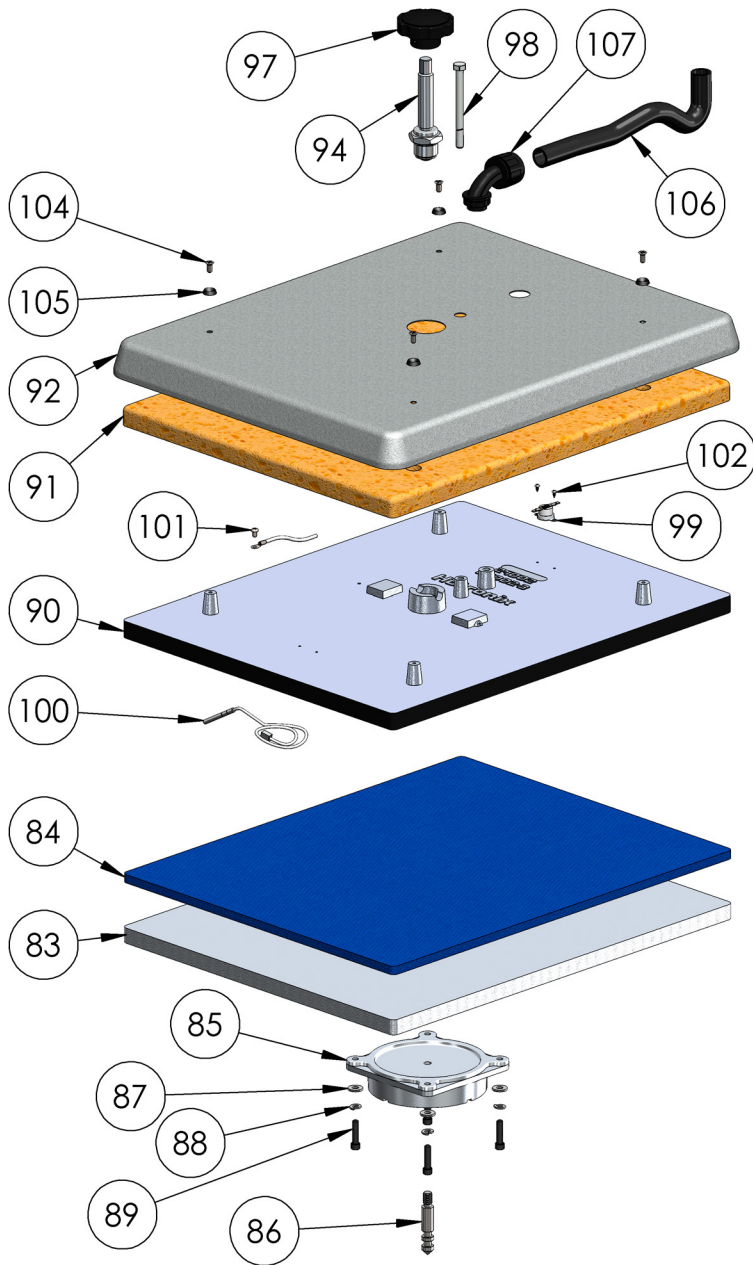
#	PART#	DESCRIPTION	QTY.
21	1-1331-2	Circuit Breaker 10A (220V & 11x15)	1

STX11 Base, 120V & 220V

#	PART#	DESCRIPTION	QTY.
21	1-1331-2	Circuit Breaker 10A (220V & 11x15)	1

STX20 & STX20* Heater

#	PART#	DESCRIPTION	QTY.
83	2-1029	Lower Platen 16 x 20	1
84	1-2136	Silicone Pad 16 x 20 Blue	1
85	3-1336	Adapter Plate	1
86	1-2215	Quick Release Pin	1
87	2-1006-25	Washer, Flat 1/4" SAE	4
88	2-1006-44	Washer, Split Lock 1/4"	4
89	3-1011-191	Screw, Socket Head Cap 1/4"-20 x 1"	4
90	2-1002-3	Heat Platen 16 x 20 1800W Milled	1
91	1-1020	Insulation 16 x 20	1
92	3-1332-S	Heat Platen Cover 16 x 20 STX	1
94	2-1081	Adjustment Spindle	1
97	1-1012	Adjustment Knob	1
98	3-1011-238	Bolt, Hex Head 5/16-18 x 3-1/2"	1
99	1-2076	Thermostat Disc	1
100	1-1272-1	Temperature Probe	1
101	3-1011-87	Screw, SS Phillips #8-32 X 1/4"	1
102	3-1011-98	Screw, SS Sheet Metal #4 X 1/4"	2
104	3-1011-217	Screw, Flat Head Phillips #10-24 x 7/16"	4
105	1-1063	Washer, Plastic Finishing	4
106	1-1048-2	Conduit, STX & MAXX 20/16/15, 12"	1
107	1-1940	Conduit Fitting, 1/2" Elbow	1



STX16 Heater

#	PART#	DESCRIPTION	QTY.
83	2-1059	Lower Platen 16 x 16	1
84	1-2135	Silicone Pad 16 x 16 Blue	1
85	3-1336	Adapter Plate	1
86	1-2215	Quick Release Pin	1
87	2-1006-25	Washer, Flat 1/4" SAE	4
88	2-1006-44	Washer, Split Lock 1/4"	4
89	3-1011-191	Screw, Socket Head Cap 1/4"-20 x 1"	4
90	2-1015	Heat Platen 16 x 16	1
91	1-1534	Insulation 16 x 16	1
92	3-1333-S	Heat Platen Cover 16 x 16 STX	1
94	2-1081	Adjustment Spindle	1
97	1-1012	Adjustment Knob	1
98	3-1011-238	Bolt, Hex Head 5/16-18 x 3-1/2"	1
99	1-2076	Thermostat Disc	1
100	1-1272-1	Temperature Probe	1
101	3-1011-87	Screw, SS Phillips #8-32 X 1/4"	1
102	3-1011-98	Screw, SS Sheet Metal #4 X 1/4"	2
104	3-1011-217	Screw, Flat Head Phillips #10-24 x 7/16"	4
105	1-1063	Washer, Plastic Finishing	4
106	1-1048-2	Conduit, STX & MAXX 20/16/15, 12"	1
107	1-1940	Conduit Fitting, 1/2" Elbow	1