



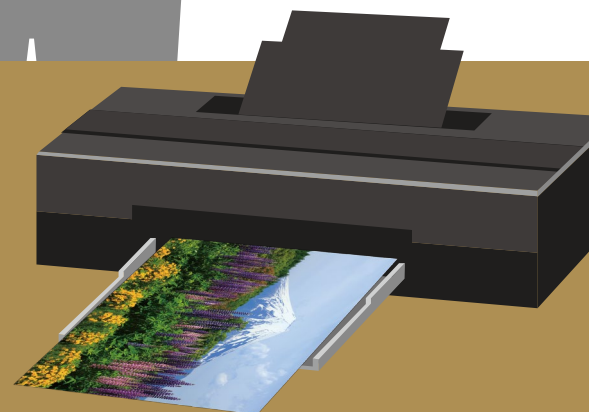
Easy Screen-to-Print Color Matching Tool

QUICK COLOR MATCH

Easy

Screen-to-Print Color Matching Guide

Let's begin!



There are many ways to work with and enjoy printed photos.



Creating postcards using your favorite shots



Entering your work in photo competitions



Making a photo album to share with family and friends

Having an easy and reliable color matching system makes printing photos more enjoyable!



Photo shown on the monitor



Photo printed out on an inkjet printer

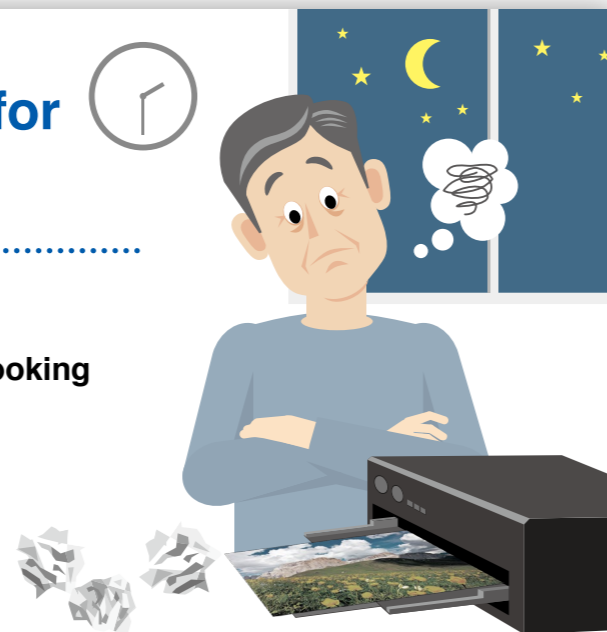
- Reduce the time and cost of making multiple prints**
- Retouch your photos with confidence**

This guide explains how you can achieve easy color matching for accurate prints with no hassle!

But without a monitor suited for color matching photos...



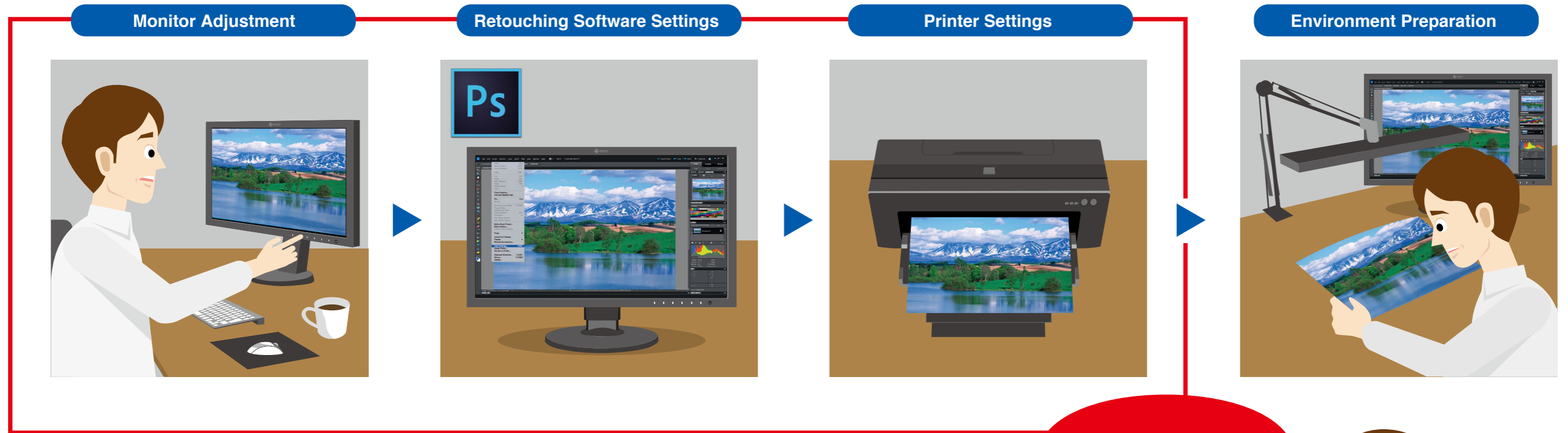
The colors you carefully retouched will print out looking different than intended.



This results in a lot of wasted time doing multiple prints trying to get the correct color.



Steps to Achieve Color Matching



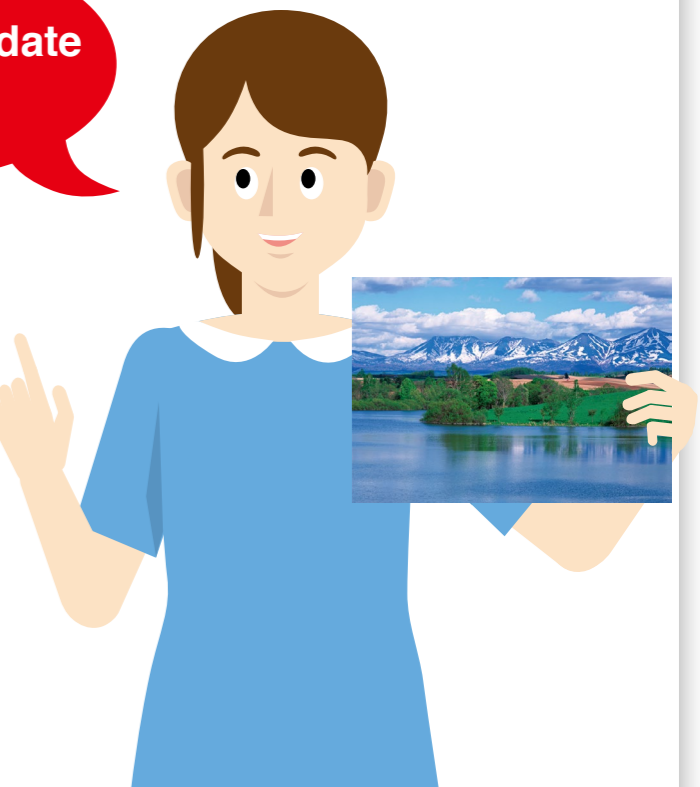
Going through each setting is a hassle.

It is not only important to adjust the monitor, but also to select the correct settings for your retouching software and printer. With even one misstep, your photos may not print with the correct colors.

Introducing a unique software solution that automatically configures the monitor, retouching software, and printer settings for you.

QUICK COLOR MATCH

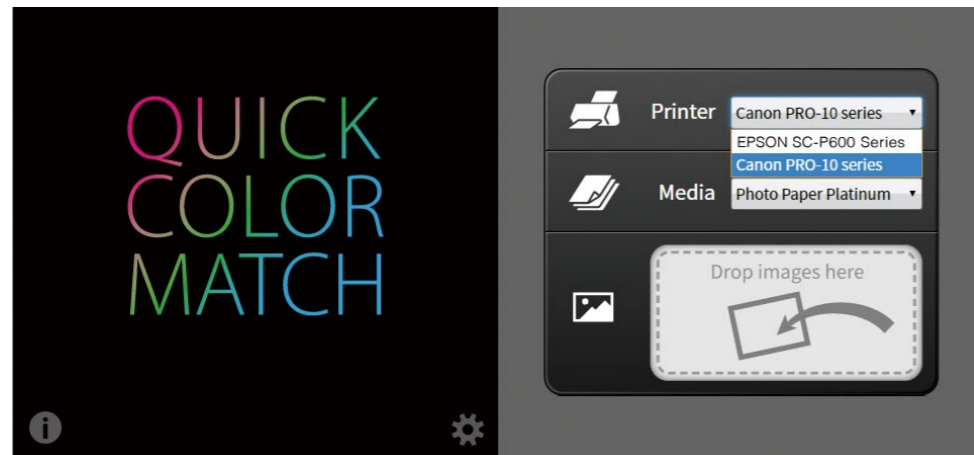
We can consolidate these steps!



See next page.

EIZO's Screen-to-Print Color Matching Software

QUICK COLOR MATCH

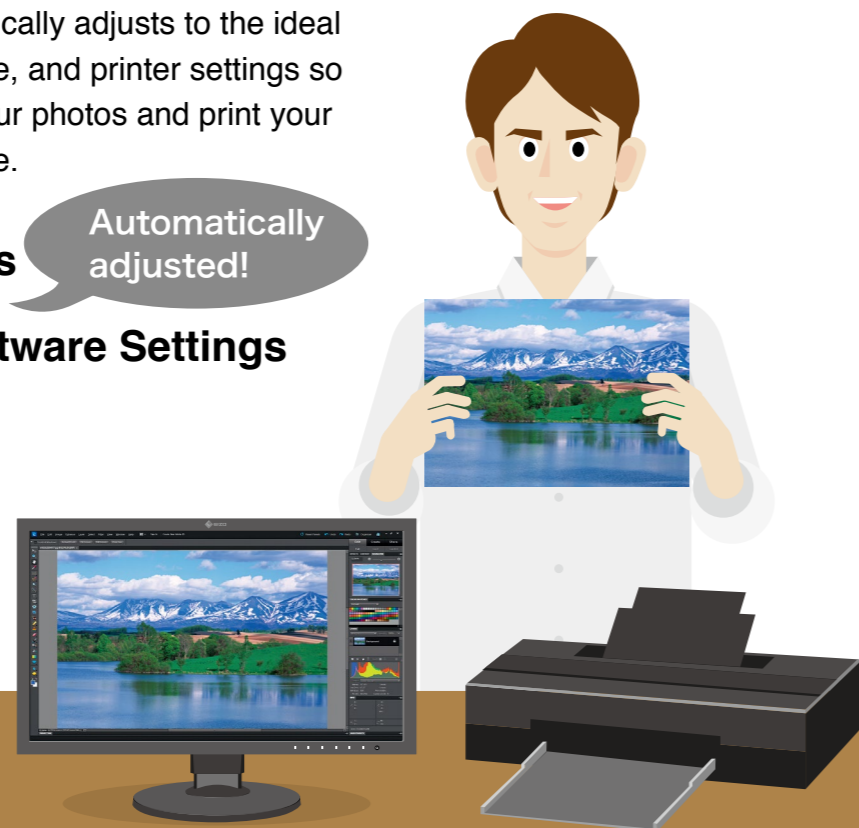


Quick Color Match is EIZO's own software solution that greatly simplifies the color matching process for photo enthusiasts and professionals alike. It was developed under a first-ever collaboration between EIZO and Adobe, Canon, and Epson.

Quick Color Match automatically adjusts to the ideal monitor, retouching software, and printer settings so you can focus on editing your photos and print your work quickly and hassle-free.

- Monitor Settings**
- Retouching Software Settings**
- Printer Settings**

Automatically adjusted!



Index

1 Preparation for Color Matching

Color Management Monitor



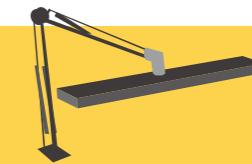
8 - 9

PC Requirements, Printer, Printer Paper, Retouching Software



10 - 11

Lighting



11 - 12

2 Monitor Connection and Software Installation

Printer Driver Installation

14 - 15

Print Plugin Software and Quick Color Match Installation

16 - 17

3 Easy Color Matching

Using Quick Color Match

Let's try



18 - 19

Matching Complete

Now you can easily match your prints to your screen! ✨

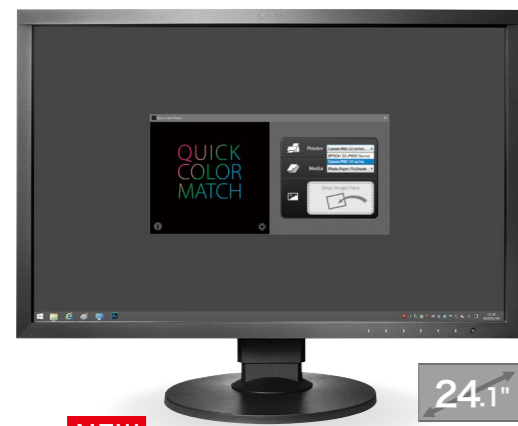
Preparation for Color Matching

A suitable monitor is needed when matching the color of your prints to the screen.

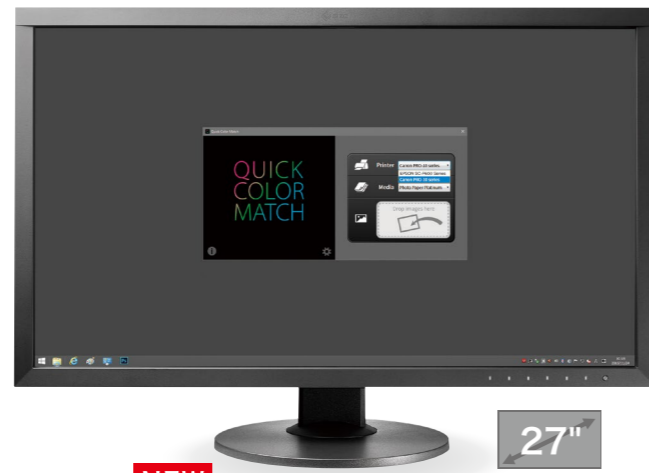
Color Management Monitor

Recommended Model!

Monitors Supported by Quick Color Match



NEW
ColorEdge CS2420



NEW
ColorEdge CS2730

CS230 CS270 CX241 CX271 CG247 **NEW** CG2420 CG277 **NEW** CG2730

Ample Screen Size for Creative Work

The CS2420 can display two A4 pages plus tool palettes on its 24.1-inch screen. The CS2730 gives you even more room to work with its spacious 27-inch screen.

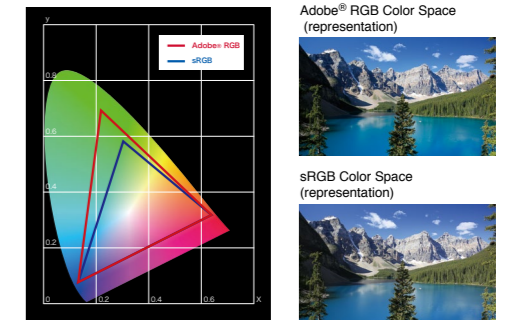
Monitor Features

- 1 99% Adobe® RGB Coverage
Images shot in Adobe RGB or sRGB will be displayed correctly.
- 2 Smooth Gradations
- 3 Uniform Brightness and Color

Choosing the Right Monitor

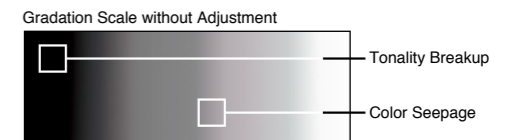
1 Displays the Correct Color Space

It is important to select a monitor that correctly displays Adobe® RGB and sRGB to reproduce colors faithfully.



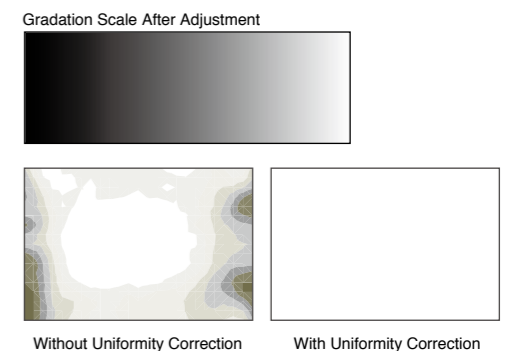
2 Displays Gradations Smoothly

In order to display solid colors and depth perception with high accuracy, a monitor that displays smooth gradations without banding is needed.



3 Displays Uniform Brightness and Color

A monitor that has been adjusted in advance to correct uniformity errors is most appropriate to ensure brightness and color are even across the screen. It is also important that it counterbalances changing color temperature and brightness due to the passage of time.



Did you know? **Before installing!**

Confirm that your ColorEdge monitor is correctly connected to your PC.



Desktop PC



Notebook PC



All-in-One PC

1 Confirm the available output connections

When using an all-in-one PC, confirm that you have the appropriate outputs and check which cables come with your monitor. If your monitor's cables do not match your PC's available outputs, you may need to obtain additional cables.

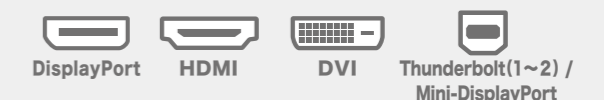
Example of a notebook PC's output terminals



2 Check the maximum resolution

Referring to your PC's user manual, choose a monitor with the appropriate resolution supported by the available outputs.

Types of PC outputs



Preparation for Color Matching

PC Requirements

- Windows 10 / 8.1 / 7
- Mac OS X Mavericks (10.9) or later

Printer

Canon



Recommended Model!

PIXMA PRO-10S

Gallery-quality A3+ photo printer with 10-ink system.

- PIXMA PRO-1
- PIXMA PRO-10
- PIXMA PRO-100
- PIXMA PRO-100S
- imagePROGRAF PRO-1000

■ Printer availability varies by country. See printer manufacturer for details.

Epson



Recommended Model!

SC-P600

Professional A3+ printer with Epson UltraChrome HD ink technology for unsurpassed quality.

- SC-P800
- Stylus Photo R3000
- Stylus Photo R2000
- SC-P400

Printer Paper

For Canon Printers

- Photo Paper Platinum
- Photo Paper Plus Glossy
- Photo Paper Pro Luster
- Photo Paper Pro Premium Matte
- Photo Paper Plus Semi-Gloss
- Matte Photo Paper

■ Papers supported by Quick Color Match vary depending on the printer model.
For a complete list of supported papers, visit: www.eizoglobal.com/i/qcm-paper/

For Epson

- Epson Ultra Glossy
- Velvet Fine Art Paper
- Ultra Smooth Fine Art Paper
- Premium Glossy
- Premium Semigloss
- Premium Luster
- Achival Matte
- Matte

Retouching Software

Recommended for the Best Color Matching!



Adobe Photoshop CC / CS6

Other Supported Retouching Software

- | | |
|--------------|---|
| Canon | <ul style="list-style-type: none"> ■ Adobe Photoshop Lightroom ■ Adobe Photoshop Elements ■ Canon Digital Photo Professional |
| Epson | <ul style="list-style-type: none"> ■ Adobe Photoshop Lightroom ■ Adobe Photoshop Elements ■ Nikon ViewNX-i |

Did you know?

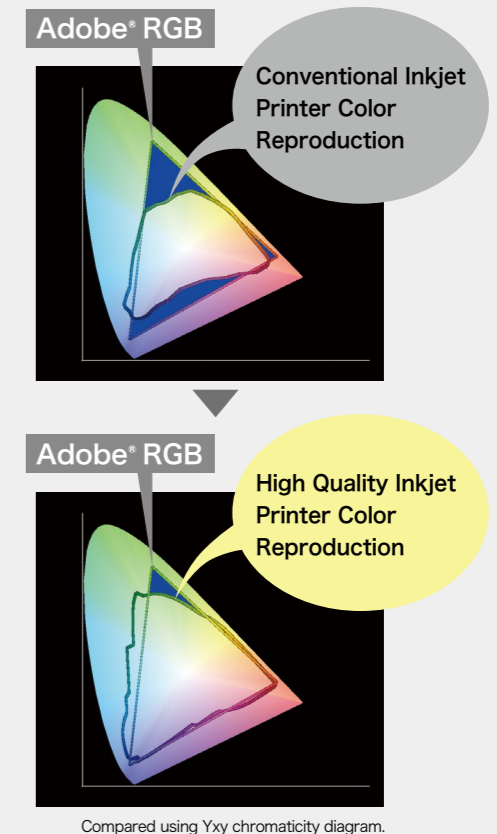
Why a printer that supports color management is important

It can faithfully print Adobe® RGB or sRGB images.

Adobe RGB is a wide color space that captures more vivid colors in images. If you use a conventional printer with a narrow color space, some of the brilliant blues and greens in your photos will be lost in the printing process. By using a high-quality printer, color reproduction is greatly improved so you can achieve prints that match your screen.

Consistent Color After Printing

Using a color printer with quickly drying ink ensures that colors are consistent. This makes it easier to check your work right after printing.



Compared using Yxy chromaticity diagram.

Preparation for Color Matching

In order to check that your photos are printed with the correct colors, you need to view the prints under a light source with a 5,000 K color temperature.

Lighting



Choosing Appropriate Lighting

The appropriate viewing environment can be achieved by using a color temperature that is close to "sunlight" (5,000 K). This value is based on the human sense of color.



Bulbs that meet the color temperature standard of 5,000 K can be found through general electronic retailers. Below is EIZO's recommendation.

N-EDL... AAA Day white color rendering (Ra: 90-99)*

*Color rendering index (Ra) refers to a quantitative measure of the ability for a fluorescent light to reproduce the colors we see in natural light.

Prevent Glare with a Light-Shielding Hood

When comparing prints to your screen, glare on the monitor due to ambient lighting can cause colors to appear differently.

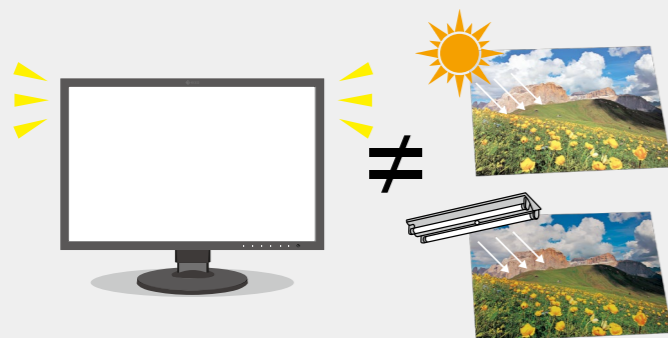
If you use a light-shielding monitor hood, you can prevent glare and reflections on the screen to carry out color matching more accurately.

EIZO Monitor Hoods



Did you know?

Printed photos reflect the light around them and travel to the human eye where they are recognized as an image.



Due to this, when viewing objects in outside light during the day and indoor lighting in the evening, the color of the light changes.

Monitors emit light from their backlights so even if the ambient lighting conditions change, the colors you see on the screen will have little variance. This is why comparing your photo prints to the screen under varying ambient lighting conditions may cause the colors to look different.

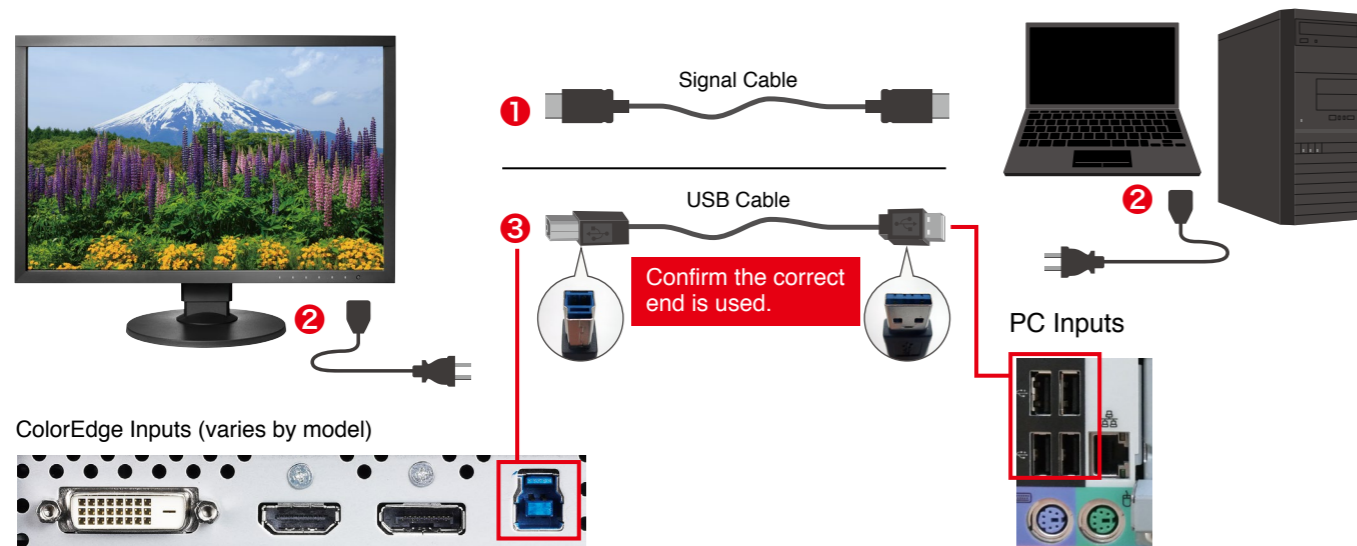


Software Installation

1 Connecting the Monitor

While referring to your monitor's setup guide, follow these steps.

- 1 Connect your ColorEdge monitor to your computer using the signal cable.
- 2 Connect your ColorEdge monitor and the computer to the power using the power cables.
- 3 Connect your ColorEdge monitor to the computer using the USB cable.

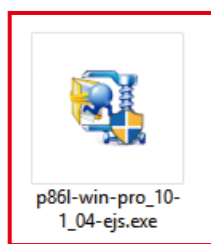


2 Printer Driver Installation

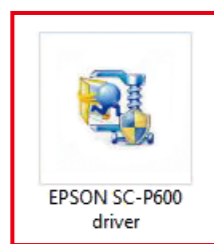
For Windows

Insert the utility disc that came with your printer or download the appropriate drivers from the manufacturer's website.

Double click on the DVD drive or installation file you downloaded.



Canon

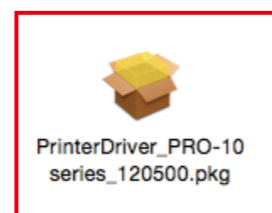


Epson

For Mac

Download the appropriate drivers for your printer from the manufacturer's website.

Double click the installation file you downloaded.



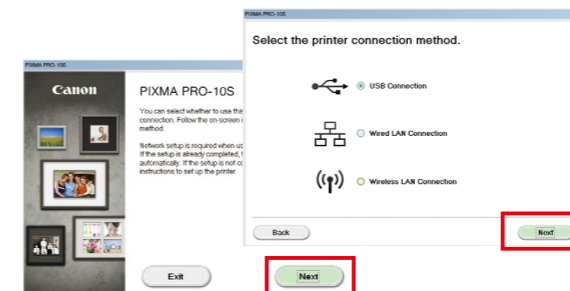
Canon



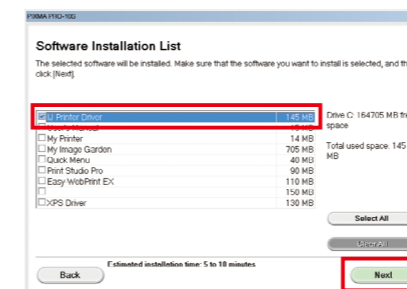
Epson

Follow the instructions on your screen to carry out installation.

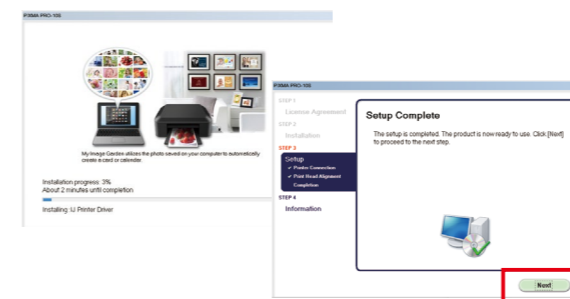
For Canon Printers



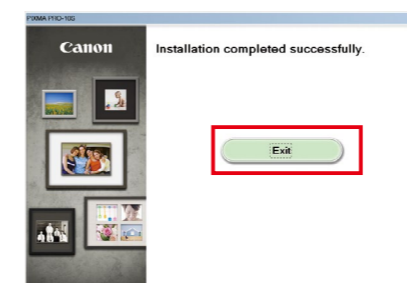
When the installation window appears, click **Next**. Select how you will connect to the printer (Network or USB) and click **Next** again.



From the list, check IJ Printer Driver and click **Next**.

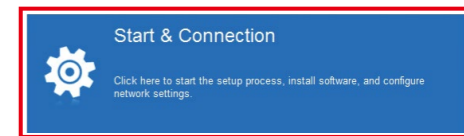


Continue to click **OK** and **Next** until you reach the end of the installation process.

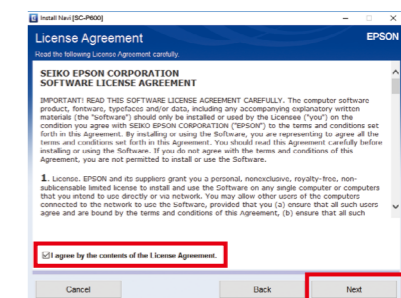


When the installation is complete, click **Exit**.

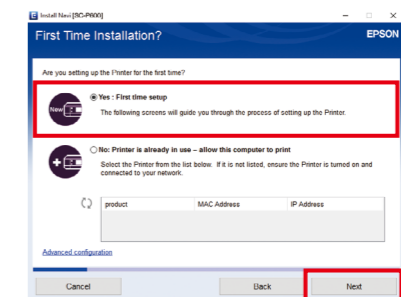
For Epson Printers



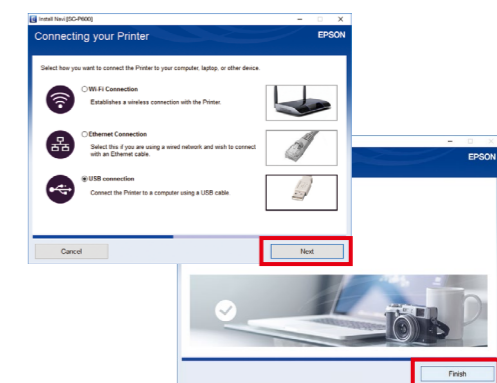
When the installation window appears, click **Start & Connection**.



Check the box to agree to the terms of the license and click **Next**.



Select **First time setup** and click **Next** and **OK**.



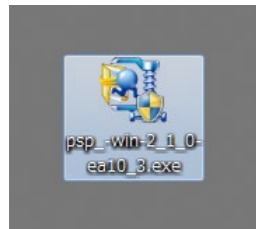
Select how you will connect to the printer (Wifi, Ethernet, or USB) and click **Next**. When the installation is complete, click **Finish**.

Software Installation

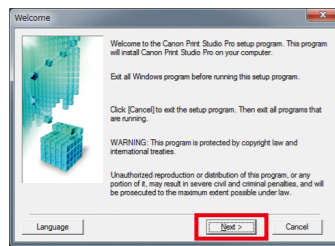
3 Printer Plugin Installation

For Canon Printers

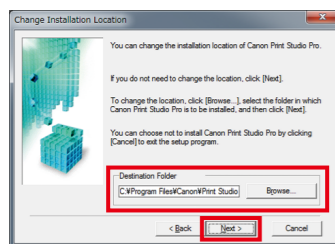
Canon Print Studio Pro Ver. 2.1.0



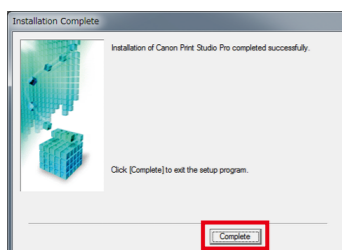
Double click the printer plugin installation file to begin.



Proceed with the installation by clicking **Next** and **Yes**.



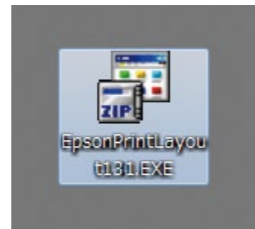
Confirm the installation location and click on **Next** and **Yes**.



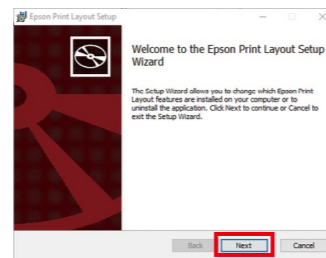
Click **Complete** to finish the installation.

For Epson Printers

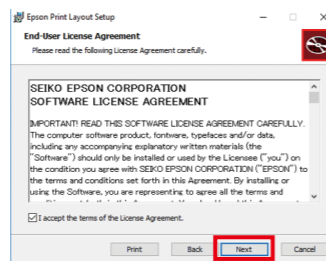
Epson Print Layout Ver. 1.3.1



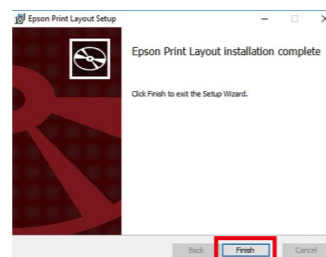
Double click the printer plugin installation file to begin.



Proceed with the installation by clicking **Next**.



Check the box to agree to the terms of the license and click **Next**.



Click **Finish** to complete the installation.

4 Quick Color Match Installation Guide

Download Quick Color Match for free by visiting:
www.eizoglobal.com/i/download/qcm

For Windows

1

Double click the Quick Color Match installation file to begin. Click **Yes** to allow the installation to continue (Windows).

2

Proceed with the installation by clicking **Next**.

3

Check the box to agree to the terms of the license and click **Next**.

4

Confirm the installation location and click **Next**. Click **Next** again in the next window.

5

Finally, click **Install**.

6

Click **Finish** to complete the installation.

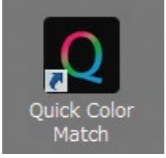
Using Quick Color Match

This guide explains how to use Quick Color Match software with Photoshop CC / CS6.


For Windows

1

Double click the Quick Color Match icon on your desktop.

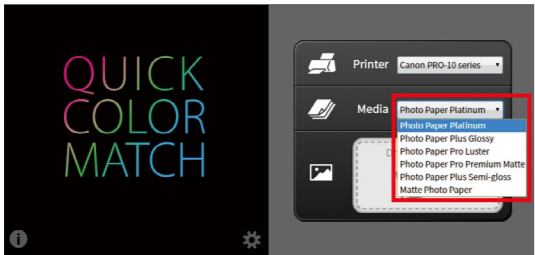


2



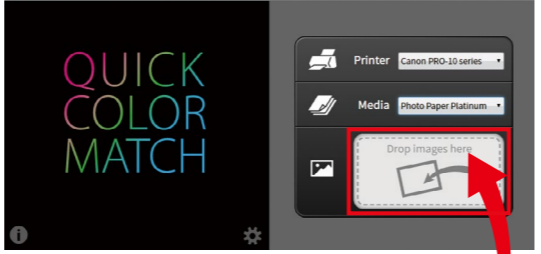
The Quick Color Match menu will appear. Confirm that the printer you will use is selected.

3

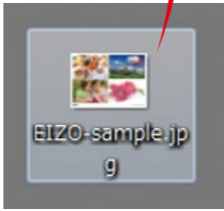


Select the paper type you will use from the list of media supported by Quick Color Match.

4

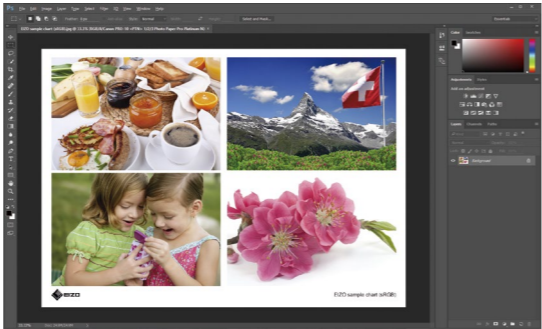


Drag and drop the image you want to print onto the Quick Color Match menu. Supported file formats are JPEG, TIFF, and PSD. Be sure to process RAW data files beforehand.



5

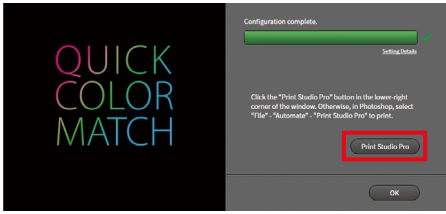
Settings in Photoshop will automatically be adjusted to the ideal settings and the color matched image will be displayed on your screen.



If you need to further edit your photo, continue to retouch in the Photoshop window.

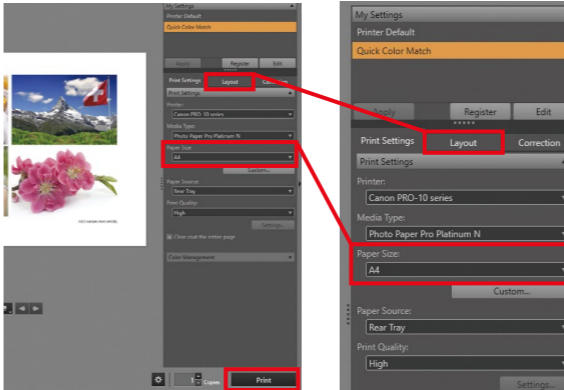
6

To print, click on the button with the name of your print plugin software in the lower right corner of the Quick Color Match window.



For Canon Printers

Using Print Studio Pro Plugin



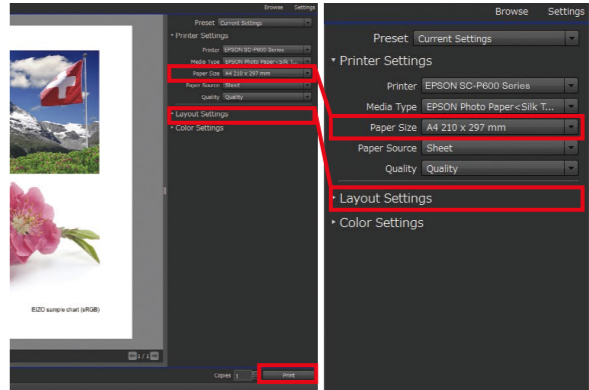
Choose the paper size and layout, then click **Print**.

\ Quick Point! /

Quick Color Match automatically adjusts the printer to the ideal color settings so you do not need to make any changes. Now you can print your photo without worrying about navigating through several windows of technical settings and options.


For Epson Printers

Using Epson Print Layout Plugin



Choose the paper size and layout, then click **Print**.


⚠ Quick Color Match saves adjustment results under your ColorEdge monitor's Custom preset. This setting will display the correct colors on your screen so do not change modes.



■ See the Quick Color Match user's manual for using other software applications.
www.eizoglobal.com/i/qcm-manual/

Color Matching Complete!

Great



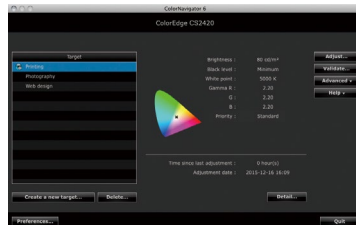
Confirm that your photo matches your screen by viewing it under a 5000 K light source. Now enjoy printing even more photos with confidence!



Further increase your matching precision

ColorNavigator 6 is EIZO's own color management software for producing predictable color results. It allows you to carry out calibration with your ColorEdge monitor's built-in sensor or the optional EX3 external sensor and manage advanced user-desired target values for further improving color matching.

ColorNavigator™ 6



Calibration Sensor
EX3

EIZO Corporation

153 Shimokashiwano, Hakusan, Ishikawa 924-8566 Japan

Phone +81-76-277-6792 Fax +81-76-277-6793

www.eizoglobal.com

All product names are trademarks or registered trademarks of their respective companies. ColorEdge and EIZO are registered trademarks of EIZO Corporation. Adobe product screenshots reprinted with permission from Adobe Systems Incorporated. Specifications are subject to change without notice.

© 2016 EIZO Corporation
(160807)