

Professional  
Imaging

Introducing The New  
**SureColor P-series and  
SureColor T-Series**

Production Class Lines

**P-Series:** Production Photo & Graphic Art

**T-Series:** Engineering | Scientific | Graphics & Posters



# 20+ Years- A Chance to Reflect

Professional  
Imaging



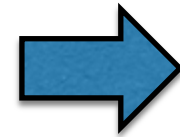
1999



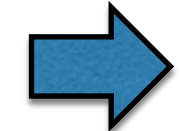
2004



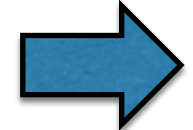
2008



2010



2020



2018



Started with a blank sheet of paper to create a design for a product class that is 20 years in the making

# SureColor P-Series: Production Class

Professional  
Imaging

**NEW**



## Consumer Photo / Poster 24" – 44"

- Consumer "Everyday" Photo
- Photo Lab, Print Service Provider
- High Volume Photo Production

6 Color with Gray



## Production Fine Art 24" – 44"

- Color Critical Photo & Fine Art
- Professional Photography
- Proofing

12 Color with K3



## Production Photo / Fine Art 64"

- Color Critical Photo / BW
- Large Format Production
- Fine Art Production

10 Color with K4

# SureColor T-Series: Production Class

Professional  
Imaging

**NEW**



## Entry Level CAD

- Desktop / Home / Small Office
- Quick Access to D-sized Plots
- Simple Setup and Easy to Use

**SOHO**



## Mid-Range CAD Printing

- Workgroup Technical Plotting
- Fastest Printer for D-sized Plots
- Print Indoor Matte Borderless Posters

**Small-Mid Office**



## Production CAD & Graphics

- Fast Throughput / Low TCO
- Versatile Media Options and Dual Roll
- Adobe Embedded Print Engine

**Enterprise – Prod Graphics**

# T-Series: Key Customer Applications

Professional  
Imaging



## Architects / Engineers and Construction

Drawings and renderings at fast speeds with accuracy and detail



## Reprographics

Print for pay - high-speed output with sellable quality



## Point of Purchase

Signs, Renderings, Graphics and Retail/Hospitality POP



## Edu / Corp Graphics

Print posters, signage, process maps, large spread sheets

**Most versatile wide format printer in Epson line**

# P-Series: Key Customer Applications

Professional  
Imaging



## Volume Photo Fulfillment

Fleet “Multi Unit” Operations  
National Fulfillment – Photo / Poster  
B2B / B2C Photo / Poster



## Production Poster

Décor Art / Specialty  
Limited Run Large Format  
Rigid Posterboard



## Photo Lab / Retail

”Every Day” Photography  
Specialized Photo Print Products  
Canvas and Enlargements



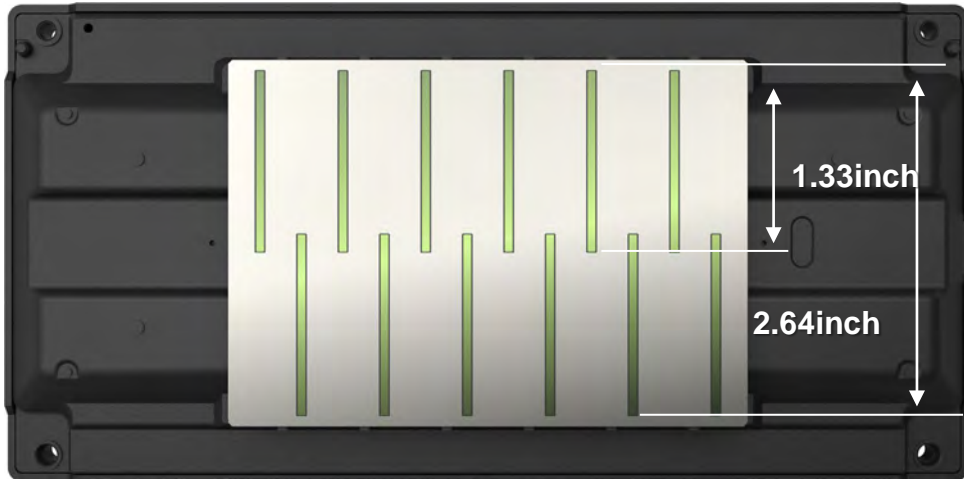
## Service Providers

Photo and Graphic Art Prints / Posters  
Point of Purchase Graphics  
Indoor Graphics

**High Speed for production photo environments**

# PrecisionCore Printhead Technology

Professional  
Imaging



PrecisionCore 2.6" MicroTFP printhead  
is 2x size of previous generation printhead

## Extreme Print Quality, Precision, and Speed

- Capable of high-resolution printing - up to 2400 dpi<sup>1</sup>
- Precision ink drop control for outstanding clarity and sharpness
- Extreme accuracy - variable size droplets as small as 3.5 picoliters

## Commercial Grade Reliability

- Heat Free and Designed to last the life of the printer – print head is not a consumable
- Nozzle Verification Technology (NVT) – automatically detects nozzle condition and instigates cleaning procedure
- Ink repelling coating reduces the chance of a nozzle clog

**Precise, accurate, and consistent - engineered to last the life of the printer**

# P-Series: UltraChrome PRO6 Ink Technology

Professional  
Imaging



**ULTRACHROME**  
**PRO6** INK



Photo  
Black

Matte  
Black

Yellow

Magenta

Cyan

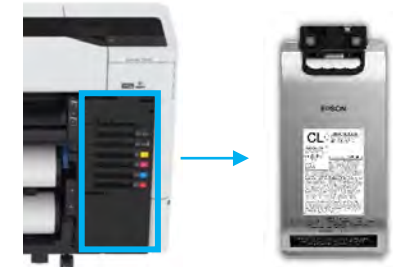
Gray

## Epson UltraChrome® PRO6 Ink

- Aqueous based pigment
- 6-color inkset with **GRAY**  
for smooth gradations and less graininess
- 110, 350, or 700 mL cartridges

## 1.6L Ink Pack (L Printer Models)

- Cost effective for production
- Less environmental waste
- Large capacity for efficiency



**Rich colors and smooth gradations with less graininess**



# T-Series: Epson UltraChrome XD3 Ink Technology

Professional  
Imaging



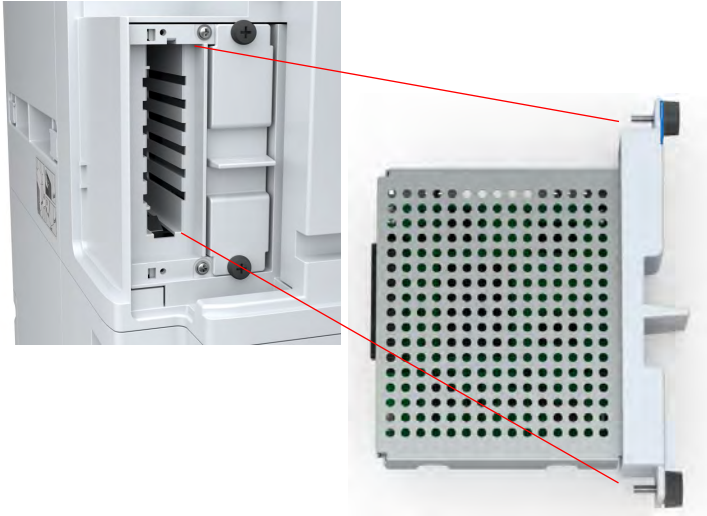
**ULTRACHROME**  
**XD3** INK

## Latest Generation All-Pigment Inks Purpose-Built

- 6-color ink set with new RED ink for rich branding and POP colors
- Durable ink - Water, smudge, and fade resistant
- 110, 350, or 700 mL cartridges
- 1.6 L Ink bag printer version available (T7770DL)

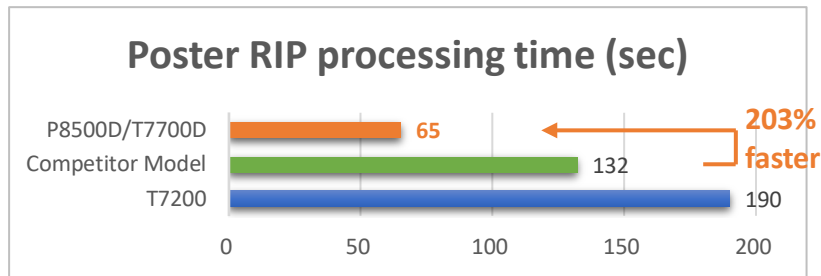


**Rich colors and durable lines that resist water, smudges and fading**



## Impressive processing time and convenience for printing PDFs

- Up to 3x faster processing of complicated data than previous generation
- Print PDF files from USB flash drive, phones and tablets – No PC required
- Extreme processing power with four Intel CPUs on board and ACE
- Live transparency blending and smoother shades
- Print PDFs from phones, tablets, and USB drives



### Previous workflow (without PDF)

4 steps



1 step!

### New workflow (with PDF)



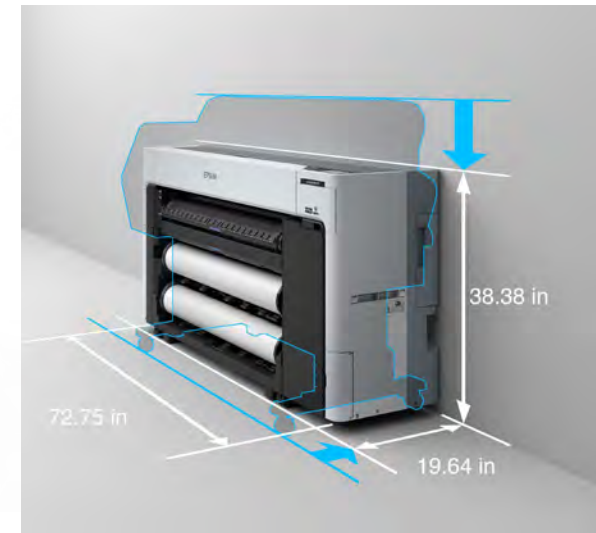
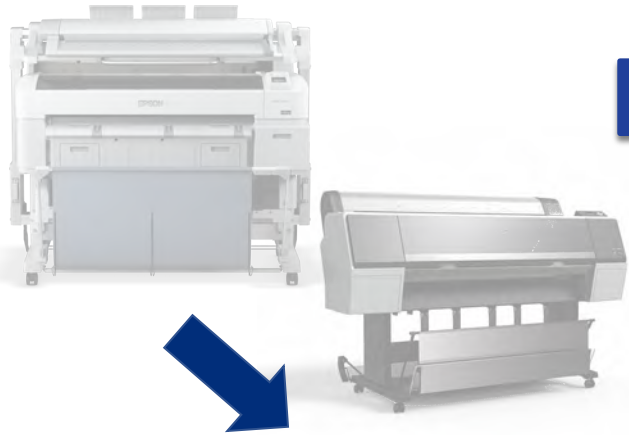
**Easy, one-step workflow minimizes processing and enhances print accuracy**

# A New Innovative Approach to Printer Design

Professional  
Imaging

## Production class printing that's more compact than ever before

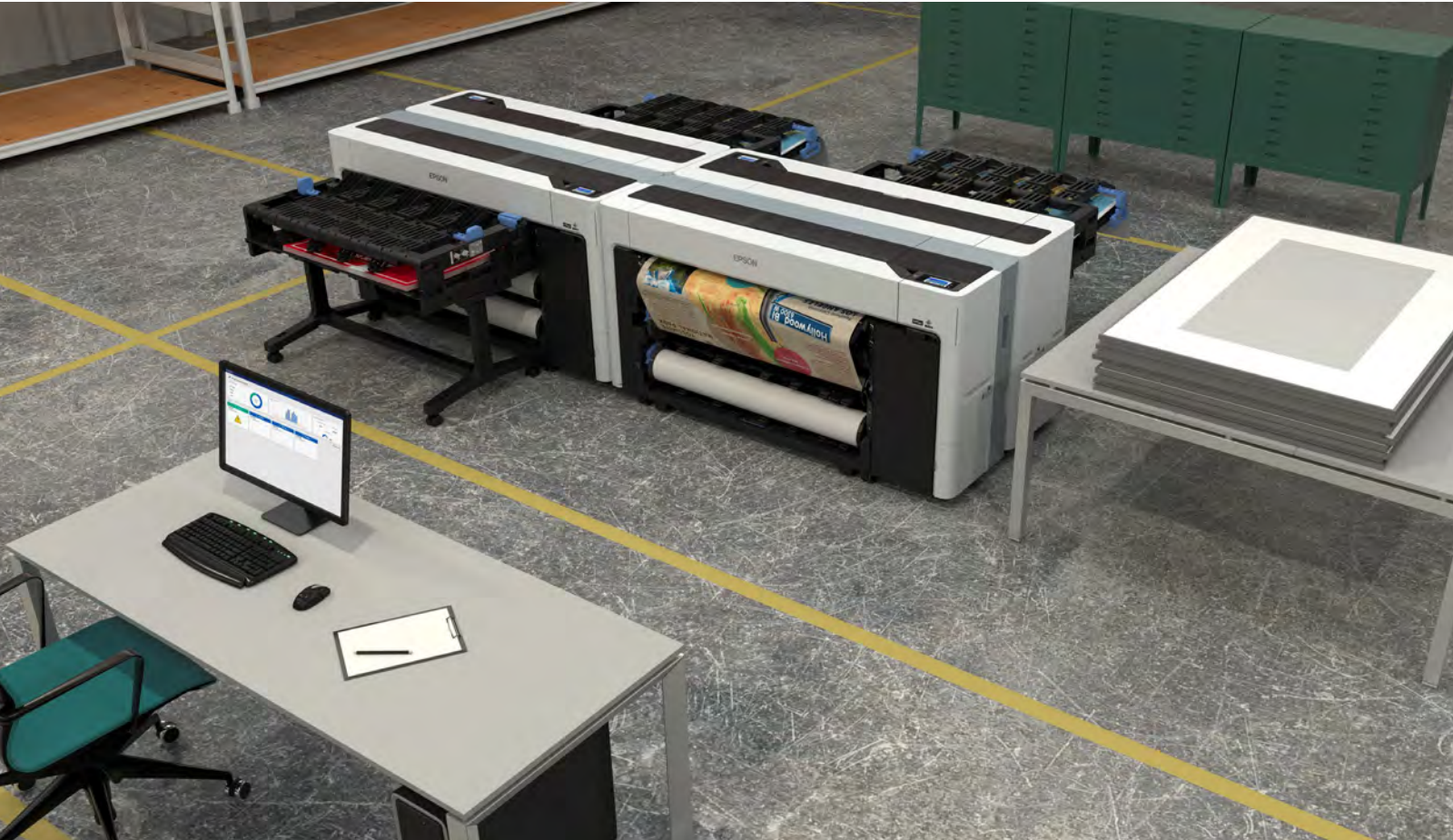
- Compact and functional one-piece design with no assembly needed
- Unpacked, set up, and printing in less than 30 minutes
- Complete front operation and flat back – can be pushed up against a wall



**Compact and powerful printing in front, back office**

# Compact Design and Full Front Operation

Professional  
Imaging

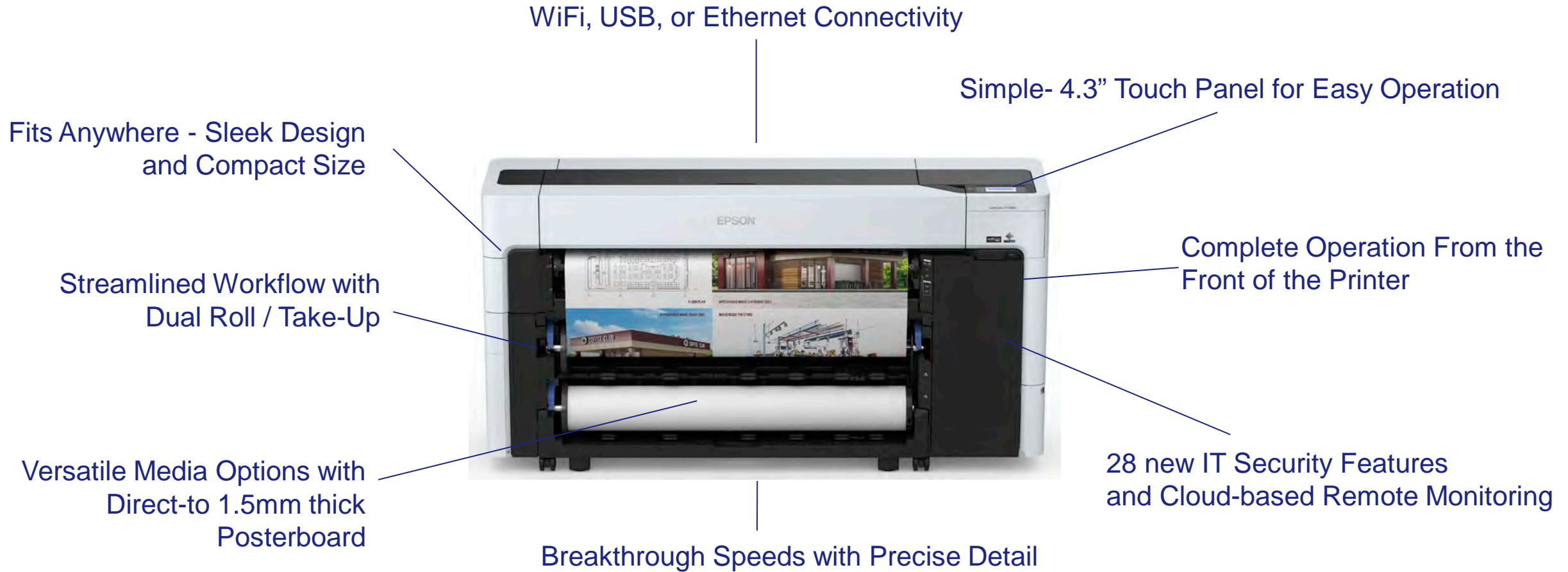


## Thin, Flat Back Design

- Ergonomic slim profile
- Place printer against wall or each other
- Depth is only 19.6 in.
- **SureColor P8570D:** up to 25% smaller than competitor models<sup>3</sup>
- **SureColor T7770D:** up to 25% smaller than competitor models<sup>4</sup>

# Quick Product Overview

Professional  
Imaging



**Significant new innovations based on customer feedback**

# Printer Version Options: T-Series

Professional  
Imaging

## Available Models

### 24" Wide Class



- **SC-T3770E** Single Roll
- **SC-T3770D** Dual Roll
- **SC-T3770DE** Dual Roll

### 36" Wide Class



- **SC-T5770D** Dual Roll

### 44" Wide Class



- **SC-T7770D** Dual Roll
- **SC-T7770DL** Dual Roll  
w/Ink Pack System

**Six new models from 24" to 44" to meet a variety of customer needs**

# Printer Version Options: P-Series

Professional  
Imaging

## Available Models



### 24" Class

- **P6570** Single Roll
- **P6570D** Dual Roll
- **P6570DE** Dual Roll



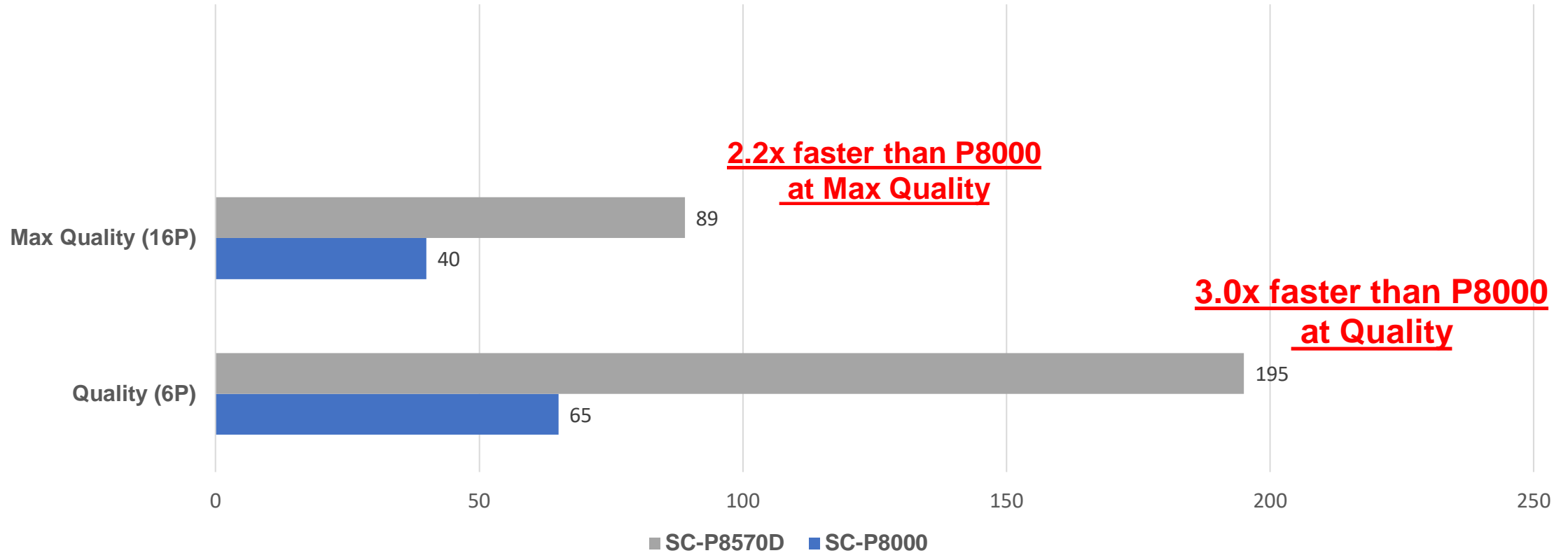
### 44" Class

- **P8570D** Dual Roll
- **P8570DL** Dual Roll  
with 1.6L Ink Pack System

**Four new models to meet a variety of customer needs**

# P8570D vs P8000 Print Speeds

Productivity Throughput sq ft/hr



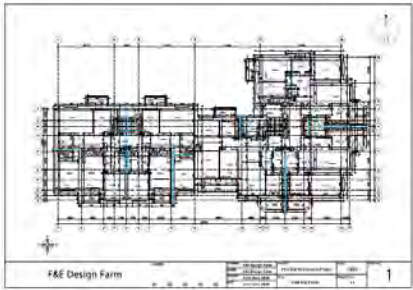
Specification to change without notice

\*Values calculated based on B0+ Media, print data: bike image. Photo Paper. Time: from first pass to end of last pass (not including cutting).



# T-Series: Breakthrough Production Print Speeds

Professional  
Imaging



## Breakthrough production-class speeds over 1400 sqft /hr<sup>1</sup>

- Up to 3.7 A1/D Size prints per minute
- Up to 2.2 times faster than previous generation

## Deliver Poster/POP Speeds over 300 sqft / hr<sup>1</sup>

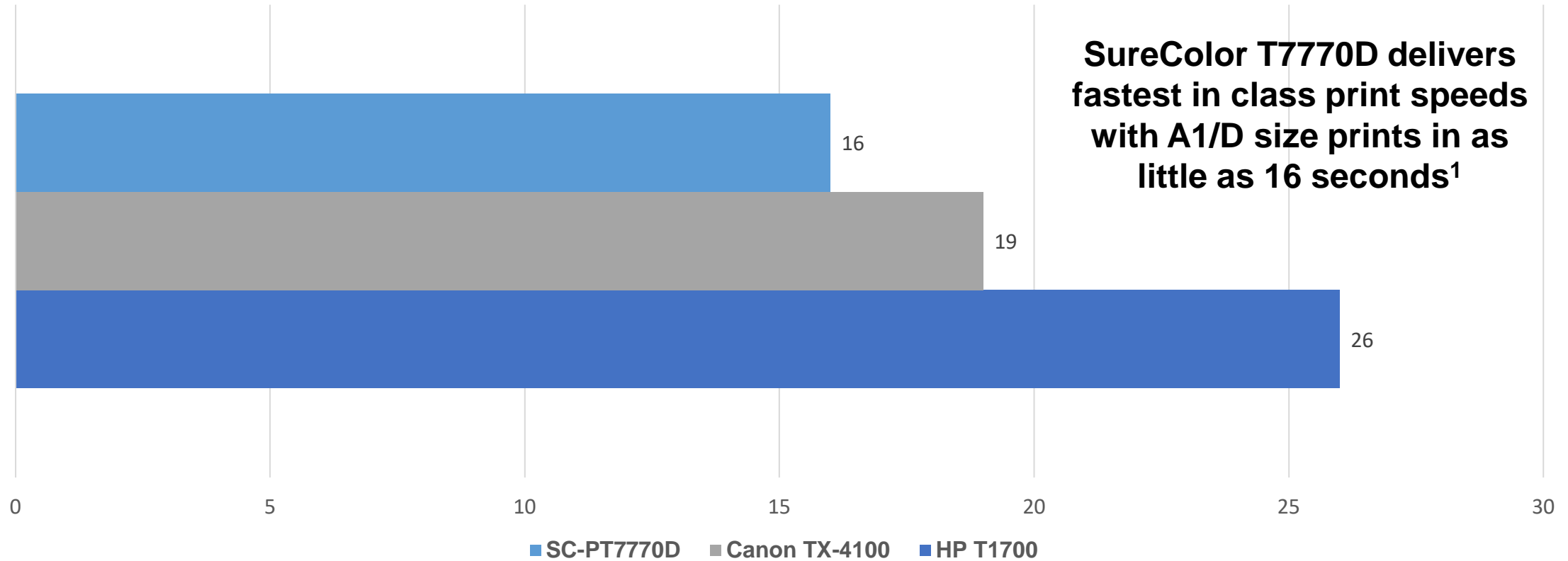
- Up to 2.5x faster than previous generation

CAD Drawing		Graphics / POP	
Mode	A1 / D-size (Seconds)	Mode	39" x 55" Posters
Draft	16	Speed	Up to 18 per hour
Speed	23	Quality	11 per hour

**SureColor T7770D 44"-wide printer delivers fastest in class print speeds.<sup>2</sup>**

# SureColor T7770D vs Competitor Print Speeds

## A1 / D-Size Print Speed (Seconds)



Compared to similarly featured CAD/Technical printers, A1/D sized prints, in fastest printing mode, priced at \$10,000 MSRP (USD) or less based on manufactures' published specifications and industry available as of May 2021. Actual print times with vary. Print speeds are based on the print engine speed only. Total throughput time for any print depends on various factors including workstation configuration, file size, print resolution, ink coverage and networking.

# State of the Art Media Handling

Professional  
Imaging



## Fully Automatic Roll-Media Loading

- Rolls load automatically – no feeding paper necessary
- Automatically switch between rolls
- Roll Selection based on driver & job settings

## Print Direct to Rigid Matte Posterboard

- No finishing required- Reduced labor cost for rigid signs
- Instantly Dry, ready for use and Durable
- Print up to 1.5mm thick (Thick media, coated aluminum, etc)

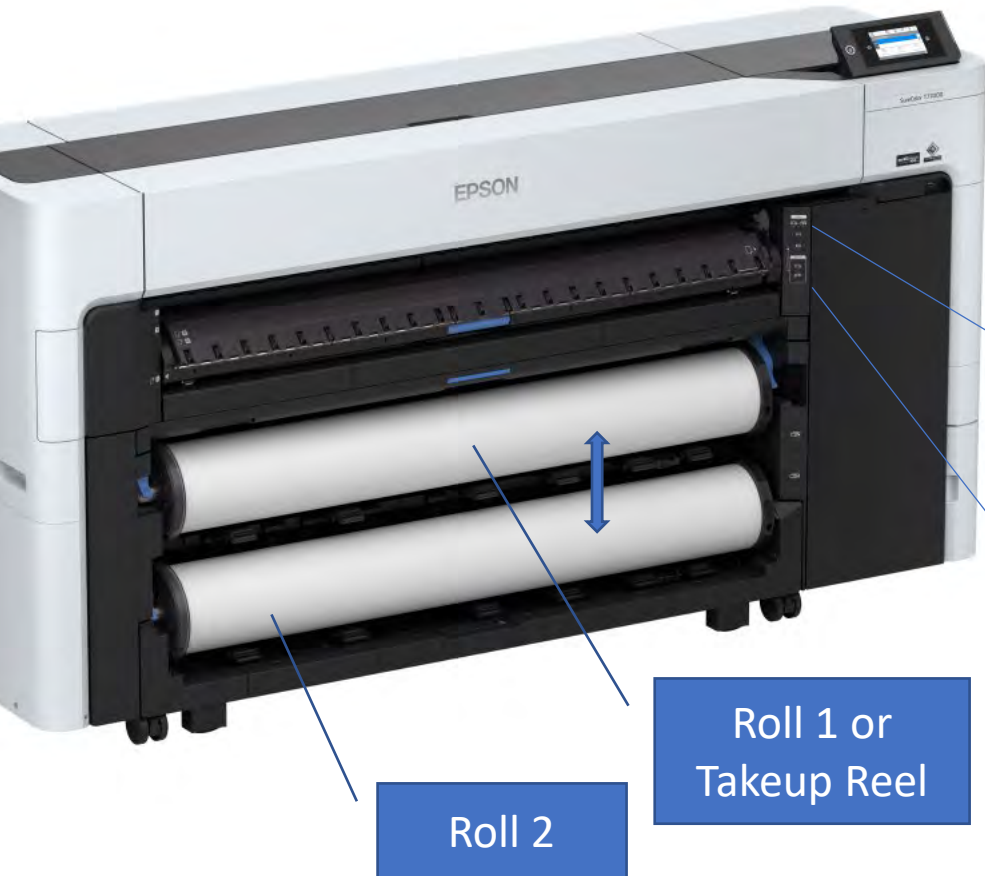
## BorderFree Printing Capability

- Built in cutter trims top and bottom for 4 sided Borderfree prints
- Print edge to edge no trimming needed
- Eliminates finishing time needed to trim

**Convenient media handling options to help reduce finishing time**

# Innovative Dual Roll / Integrated Take-up Reel

Professional  
Imaging



## Dual Input Rolls with Fast Automatic Switching

- Load two paper types or sizes simultaneously
- Load the same size/ type for double the input capacity
- Automatically switch between rolls as needed for each job based on driver/ job settings



## Included Take-up Reel Mode

- Roll 1 can be used as a take-up
- High productivity roll-to-roll printing
- Roll print side in or print side out
- Adjustable winding tension (L / M / H)

**Less intervention and no additional accessory needed for take-up**

# Works with a Wide Variety of Media

Professional  
Imaging



## P-Series: Fine Art / Photo Media and Canvas

- Epson Professional & Signature Worthy
- Epson Legacy

## T-Series: CAD, Technical, Specialty Media:

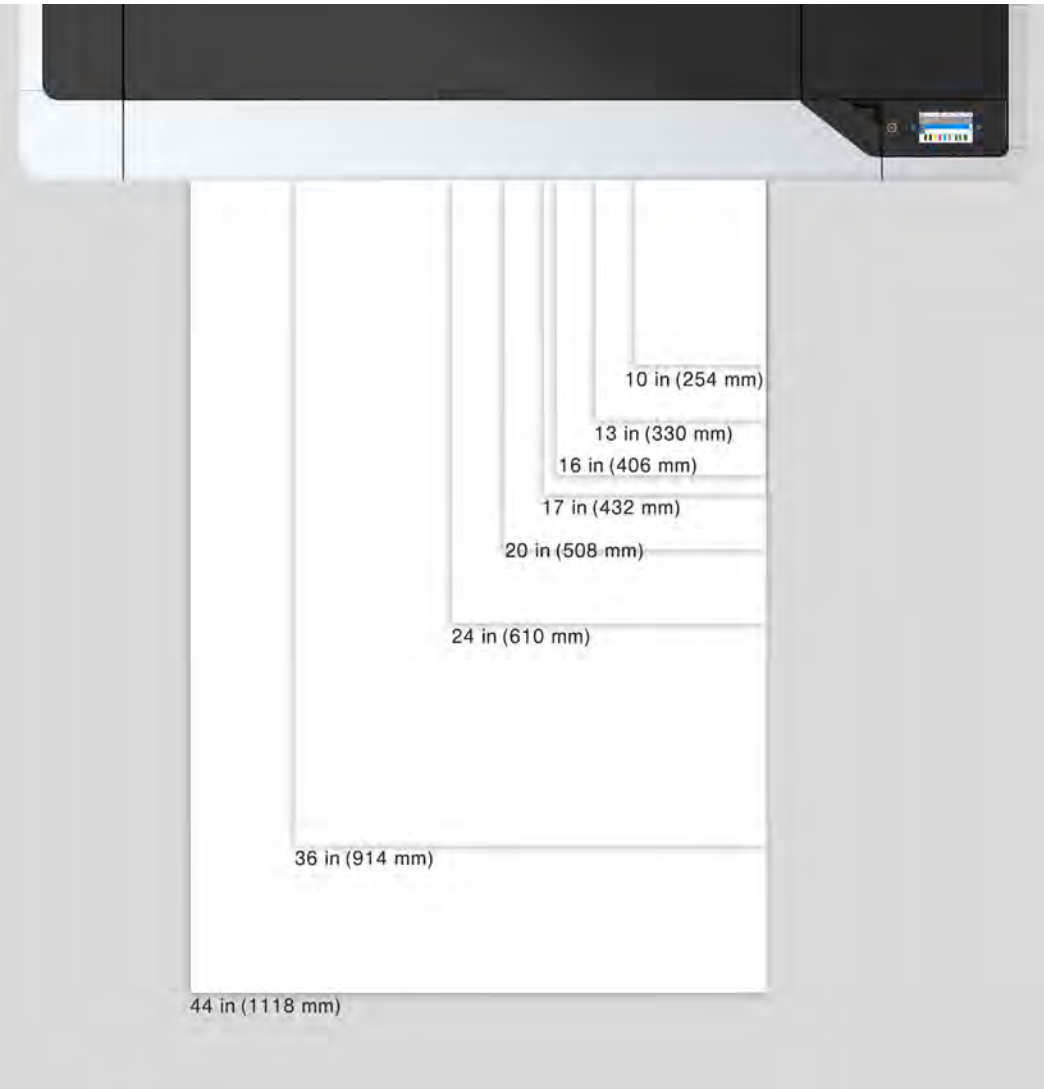
- Standard Plain Paper / Bond
- Presentation, Singleweight, Doubleweight Matte Media
- Mylar and Vellum/ Tracing Paper
- Poster Paper, Luster, and Matte Photo Media
- Matte, Satin, and Glossy Canvas

**Prints directly to 1.5mm thick Rigid Matte Posterboard**

**Versatile media handling for a wide variety of jobs and projects**

# Advanced Media Handling Capabilities

Professional  
Imaging



## Roll Media

- Roll Media ID and Length Tracking
- BorderFree® Printing (10", 13", 16", 17", **New** 20", 24", 36", 44")
- Built-in Automatic Rotary Cutter (Replaceable)
- 6.7" Roll Max Diameter. 10" Wide Minimum width
- 2" & 3" Cores

# Retractable Print Basket

Professional  
Imaging

- Closes into printer when not in use
- Allows printer to have a slim profile
- Works with a variety of finished media



**Conveniently catch wide printouts when needed / stow when not in use**

# Expandable Options: Production Stacker

Professional  
Imaging



## Optional Production Sheet Stacker

- Available in 24", 36" and 44" Versions
- Adjustable for multiple print lengths
- Continuous unattended printing for up to:
  - 2 rolls or stacks up to 2.3" thick (whichever comes first)
  - or 72 sheets of Glossy Poster Paper 250
- Supports sizes 8-1/2 x 11" up to 33.1" x 46.8"
- Casters built in - can be detached and stored when not in use
- Folds up to reduce space

Estimated starting MSRP - \$749 (24" wide stacker)

**Convenient media handling options to help reduce finishing time**



# Expandable Options: 960 Self-Encrypting SSD

Professional  
Imaging



## Solid State Memory Drive (960 GB)

- Enables a print job to immediately transfer from the computer
- Frees up bandwidth on your network and computer
- Allows a computer to be turned off while printing
- Stores jobs later for easy reprinting
- EAS-256 Encryption
- SSD data cannot be read from another computer or printer (key is protected by TPM security chip)

### SSD storage space breakdown



**Largest capacity in its class<sup>5</sup>. Secure and convenient storage for job reprinting and transfers**

# IT Security Features

Professional  
Imaging



## Supports many popular security requirements

- Over 28 security features, including security standards, data protection, secure communication, and access control
- Encrypted SSD cannot be read from other devices
- Allows setup of multiple password protected data folders
- Easy device management and tracking with Epson management software

**Robust features to adapt printer to many secure IT environments**

# Cloud Based Fleet Management

Professional  
Imaging



*Epson Cloud Solution PORT*

## Monitor and Optimize with Epson Cloud Solution PORT

- Online dashboard provides updates on printer fleet status, errors and consumables levels from virtually anywhere
- Track usage data, individual printer information, and page/square foot counters
- Create reports on usage and optimize fleet for maximum productivity
- No subscription or monthly fee

**Monitor and optimize printer fleet cost-effectively**

# Flexible Workflow and Office Management

Professional  
Imaging



## Permissions management with Epson Print Admin

- Low cost management solution
- Manage with PIN access or optional NFC card readers
- Easy setup through LDAP service for authentication printing
- Central management and print history tracking

## Epson Open Platform and 3<sup>rd</sup> Party Software Support

- Works with several popular RIP and fleet management providers:



Easy to integrate into existing fleet environments and workflows

# Convenient and Easy Operation

Professional  
Imaging



## User-friendly Operation Features

- Customizable 4.3” articulating touch panel
- Web browser accessible IT security and user settings

## Simplified Maintenance

- Nozzle verification technology and scheduled head cleaning intervals
- User accessible print head maintenance covers

## High Speed File Transfer and Mobile Connectivity

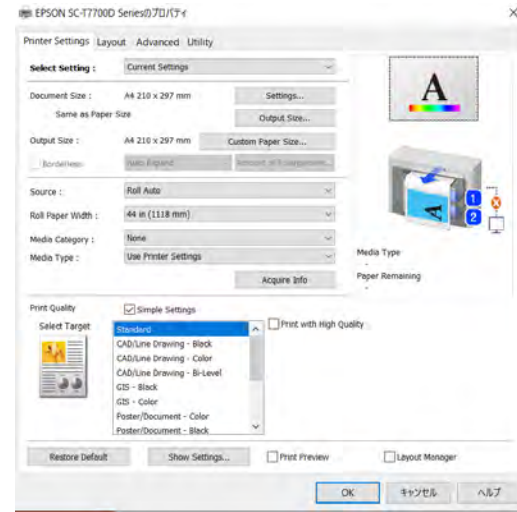
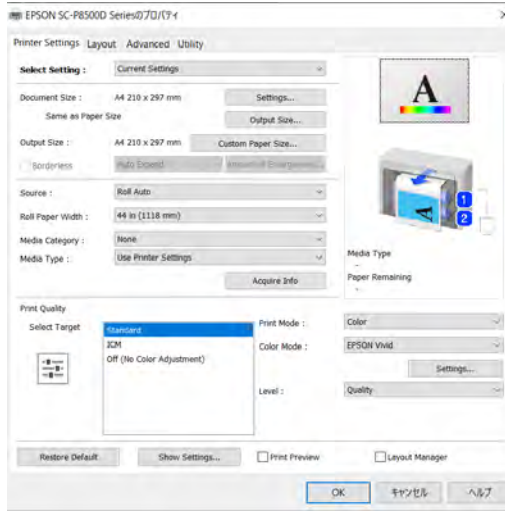
- 2.4 GHz and 5 GHz Wireless
- Connect directly to Tablets, iPads, and Smart Phones via Wifi Direct
- High-Speed Gigabit Ethernet for large file transfers

## Print Files Directly From USB Thumb Drives

**Self-user maintenance and ease of operation for a variety of users**

# Device Management Software

Professional  
Imaging



## Fleet Management

- Epson Device Admin
- Epson Print Admin
- EpsonNet Config and Setup Manager

## Printer Management

- Epson Cloud Solution PORT
- Epson Edge Dashboard
- Epson Media Installer
- LFP Accounting Tool

## Printer Settings

- Software and Firmware Updaters
- EpsonNet Print and Setup
- Windows and Mac Print Drivers

Easy to integrate into existing fleet environments and workflows

# Warranty and Service Programs

Professional  
Imaging



## Standard 1-Year Epson Preferred<sup>SM</sup> Limited Warranty

- On-site, usually next business day service
- Included technical support by phone Monday thru Friday
- Covers the printer and genuine Epson optional accessories

## Optional Epson Preferred Plus Premium Service and Support Plans Up to 5 Years\*

- Extended service plan coverage when the standard limited in-box warranty ends
- Can be purchased at any time while still under an Epson Preferred Limited Warranty, or while covered under an Extended Service Plan
- Provides up to 5-years of complete coverage from Epson\*

\* Limitations apply. Availability of coverage length availability depends on model. See [www.Epson.com/support](http://www.Epson.com/support) for details.

# Key Feature Summary

Professional  
Imaging



- **Breakthrough Production-Class Speeds**

- **New UltraChrome 6-ink set with Gray (P) or Red (T)**

  - Matte and Photo black / no switching on P-Series

- **New space-saving, compact one-piece design**

- **Advanced media handling**

  - Dual Roll, Automatic Roll Switching, Built-in take-up reel

- **Adobe Embedded Print Engine**

- **Easy Operation and Simplified Maintenance**

- **Over 28 IT Security Features**

- **Epson Cloud Solution PORT / 3<sup>rd</sup> Party Software**



# Key Launch Dates

Professional  
Imaging



	SureColor P8570D 44" Wide Production Photo Printer	SureColor T7770D 44" Wide CAD/Graphics Printer
MSRP	\$6445	\$6945
Shipping Date	Q4 2021	Q4 2021

24", 36", and L model MSRP / Detail will be available July 2021



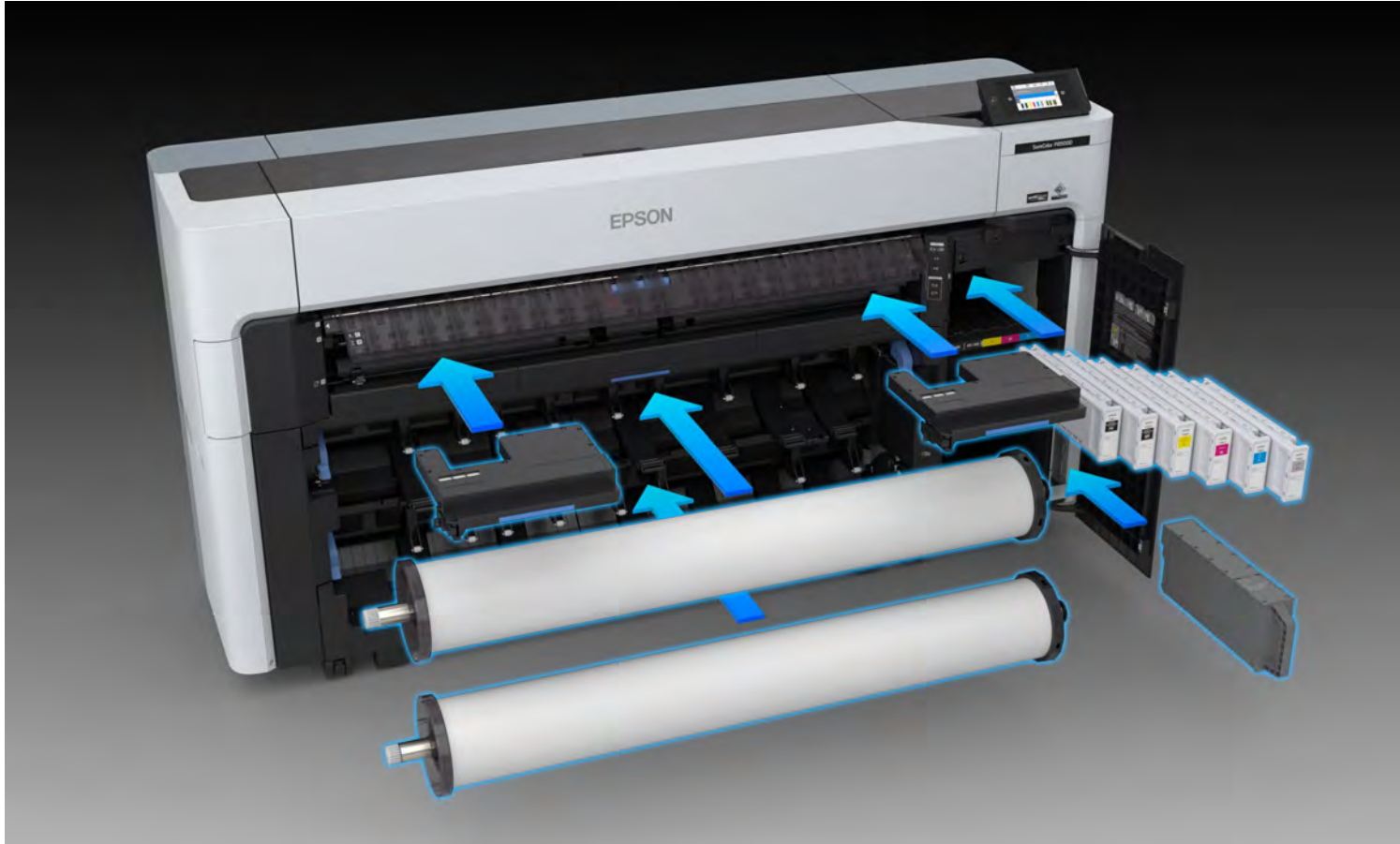
**Thank you**



# Appendix

# Consumables and Accessories

Professional  
Imaging



- Consumables
  - Inks
  - Borderless Maintenance Tanks
  - Maintenance Tank
  - Rotary Cutter Assembly
  - Cleaning Swabs
- Accessories
  - Print Stacker
  - 960 GB SSD
  - Adobe Embedded Print Engine
    - Standard in P8570D, T7770D
  - Additional Spindle

# SureColor P8570D Product Codes

Professional  
Imaging

Model Name	SSD Unit	Production Stacker (44")	Roll Feed Spindle (44")
SC-P8570D	C12C936671	C12C937131	C12C936171

Replacement Cutter Blade	Maintenance Box	Borderless Maintenance Box	Cleaning Stick
C13S210117	C13S210115	C13S210116	C13S090013

Ink Size (ml)	Color	Product Code
700	PK	T48L120
	C	T48L220
	M	T48L320
	Y	T48L420
	MK	T48L820
	GY	T48LE20
350	PK	T48S120
	C	T48S220
	M	T48S320
	Y	T48S420
	MK	T48S820
	GY	T48SE20
110	PK	T49A120
	C	T49A220
	M	T49A320
	Y	T49A420
	MK	T49A820
	GY	T49AE20



# SureColor T7770D Product Codes

Professional  
Imaging

Model Name	SSD Unit	Production Stacker (44")	Roll Feed Spindle (44")
SC-T7770D	C12C936671	C12C937131	C12C936171

Replacement Cutter Blade	Maintenance Box	Borderless Maintenance Box	Cleaning Stick
C13S210117	C13S210115	C13S210116	C13S090013

Ink Size (ml)	Color	Product Code
700	PK	T50L120
	C	T50L220
	M	T50L320
	Y	T50L420
	MK	T50L820
	GY	T50LF20
350	PK	T50S120
	C	T50S220
	M	T50S320
	Y	T50S420
	MK	T50S820
	GY	T50SF20
110	PK	T51A120
	C	T51A220
	M	T51A320
	Y	T51A420
	MK	T51A820
	GY	T51AF20



# IT Security Features

Category		P8500D T7700D	Description
Security Standard	ISO 15408		*WF-C21000/LX-10050 series support and this is the only difference
	FIPS 140		
	Firmware update Enable/Disable option		Setting to allow firmware update
	<a href="#">TPM (Trusted Platform Module)</a>	Y	
	<a href="#">BIOS security validation (when power on)</a>	Y	When power on, printer checks BIOS falsification
	<a href="#">Secured BIOS</a>	Y	Use secured BIOS when program falsification is detected
	<a href="#">Firmware/Software code validation (when power on)</a>	Y	When power on, printer checks firmware/software falsification
	Run-time memory validation (during power on/working)		Printer checks all codes during power on/working to avoid a malicious program falsification.
	Re-start / Self-recovery		When printer detects malicious program falsification, printer re-start automatically to recover.
	<a href="#">Security Event Log</a>	Y	Logged security events (only administrator can access)
	SIEM (Security Information and Event Management)		Central management of security log for devices and servers using Syslog.
	<a href="#">Firmware Digital Signature</a>	Y	During firmware update, printer verifies the firmware using a digital signature
Data Protection	Protect system files and directories	Y	
	<a href="#">Encrypted SSD</a>	Y	Saved data in SSD is secured using encrypted SSD.
	Secure file deletion		Secure file deletion in HDD after Scan to Folder etc.
	Secure storage deletion	Y	The device completely erases all data in it at the delete operation by user.
	Encrypted email (=S/MIME email)		The email generated by "Scan to Email" is encrypted.
	<a href="#">SMTP server</a>	Y	Encrypted communication channel for email by SMTP

# IT Security Features Continued

Category		P8500D T7700D	Description
Secure Communication	Network anomaly behavior detection		Printer is monitoring anomalous communication at the packet level.
	"802.1x network authentication (IEEE 802.1x)"	Y	Authentication when device is connected
	SNMPv3	Y	Encrypted device communication (use for printer status, ink level etc.) by SNMPv3
	TLS 1.1/1.2	Y	Encrypted device communication (use for printer settings) by TLS 1.1/1.2
	<a href="#">IPP printing</a>	Y	Encrypted communication channel by supporting IPP standard
	<a href="#">IPSec</a>	Y	Encrypted communication channel by supporting IPsec standard
	Encrypted print job/data		IPP is one of idea if customer using LAN connection.
	CA certificate	Y	CA certification for secure features for SSL/TLS, IPsec, 802.1x. etc.
	Device identity certificate	Y	Device identity certification for secure features for SSL/TLS, IPsec, 802.1x. etc.
	Enable/Disable Network port	Y	
	<a href="#">Enable/Disable USB port</a>	Y	
Device Access Control	<a href="#">Single PIN/Password</a>	Y	Device unlocked by PIN/Password (=simple device lock/unlock)
	<a href="#">Multiple PINs/Passwords</a>	Y	Device unlocked by PIN/Password and menu access level is able to configure by PIN/Password
	Access Control by administrator password	Y	Only administrator is able to access to specific menu.
	<a href="#">Encrypted PINS/Passwords</a>	Y	
	<a href="#">ACL (Access Control Lists)</a>	Y	Only registered user can use device(s)
	<a href="#">Active Directory</a>	Y	User information is managed using Active Directory
	<a href="#">LDAP</a>	Y	User information is managed using LDAP
	<a href="#">Wi-Fi Direct</a>	Y	Able to print using Wi-Fi Direct.
	NFC support		NFC(Near Field Communication) to communicate with mobile.
<a href="#">iBeacon (Bluetooth Low Energy)</a>	Y		



Specifications are Subject to Change Without Notice

1. Print speeds are based on the print engine speed only. Total throughput time for any print depends on workstation configuration, file size, print resolution, ink coverage, networking, etc. Actual print speeds will vary.
2. Compared to similarly featured CAD/Technical printers, A1/D sized prints, in fastest printing mode, priced at \$10,000 MSRP (USD) or less based on manufactures' published specifications and industry available as of May 2021. Actual print times with vary. Print speeds are based on the print engine speed only. Total throughput time for any print depends on various factors including workstation configuration, file size, print resolution, ink coverage and networking.
3. Compared to similarly featured Aqueous Photo printers priced at \$10,000 MSRP (USD) or less based on manufacturers' published specifications and industry data available as of May 2021.
4. Compared to similarly featured Aqueous CAD/Technical printers priced at \$10,000 MSRP (USD) or less based on manufacturers' published specifications and industry data available as of May 2021.

Epson, MicroPiezo, PrecisionCore, PrecisionDot, UltraChrome, SureColor and are trademarks or registered trademarks, Epson Preferred is a service mark, and EPSON Exceed Your Vision is a registered logo mark of Seiko Epson Corp.

All other product brand names are trademarks and/or registered trademarks of their respective companies.  
Epson disclaims any and all rights to these trademarks.

© Epson America, Inc. 2021 JH MA June 2021/ v1.1