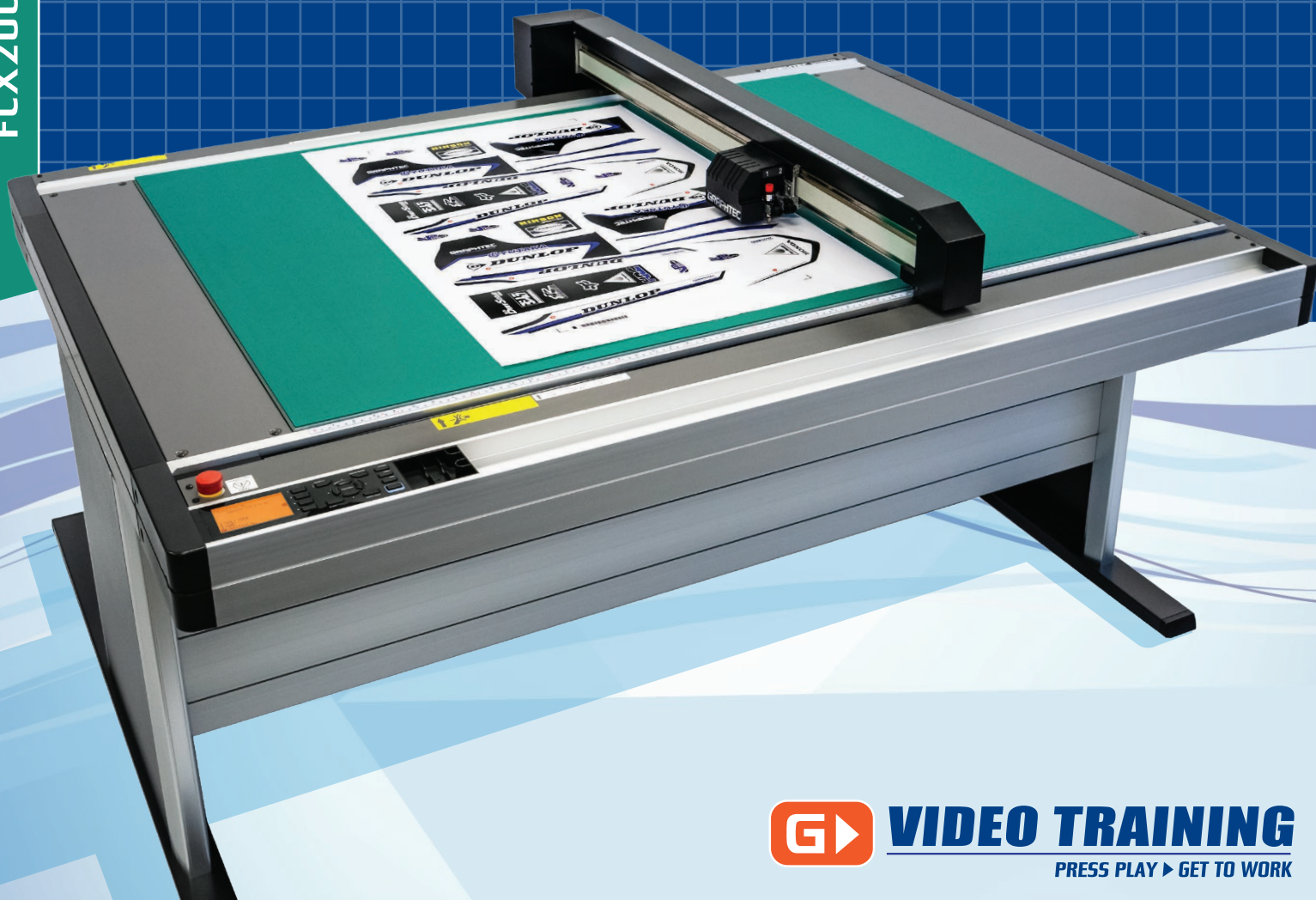


FCX2000



VIDEO TRAINING

PRESS PLAY ▶ GET TO WORK

IN-HOUSE PROTOTYPING • SPECIALIZED PRODUCTION

FCX2000-60VC

VACUUM MEDIA HOLD DOWN

24" x 36"

EFFECTIVE CUTTING AREA



FCX2000-120VC

VACUUM MEDIA HOLD DOWN

36" x 47"

EFFECTIVE CUTTING AREA



FCX2000-180VC

VACUUM MEDIA HOLD DOWN

36" x 70"

EFFECTIVE CUTTING AREA



GRAPHTEC FCX2000 SERIES

FEATURE HIGHLIGHTS

The **FCX2000 Series Flatbed Cutter** is the ultimate solution for package prototyping and short production runs of rigid materials without the use of a cutting die.

With Graphtec's medium to large flatbed cutting plotters, you have the right tool for contour cutting without requiring a die. Users are empowered to create custom orders at low cost with short delivery times. Redesigned Y-bar and cutting table deliver high precision cutting and creasing.

Dual Cutting Head on the carriage increases work efficiency by allowing you to employ 2 different tools for the same job.

Offline USB Operation enables operators of all skill levels with a simplified workflow to process various types of media for cutting without a computer.

PRINT & CUT Using Reverse Cutting is a new and easy function that will protect the printed image by cutting and creasing on the reverse side of the media. This feature reads registration marks, cuts them out, then after flipping the media over, reads the cut registration marks to cut or crease on the reverse side of the media.

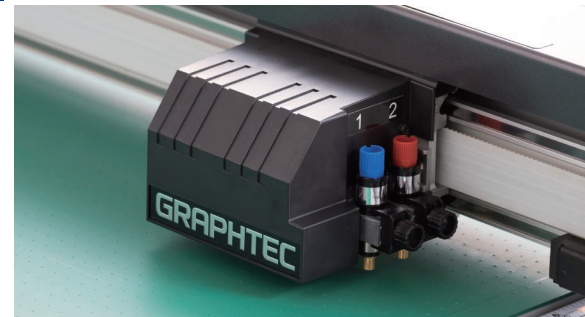
ARMS 6 - Advanced Registration Mark Sensing System

The FCX2000 includes an improved ARMS 6 for contour cutting of your preprinted graphics, prototyping, reflective sheeting and other professional rigid applications.

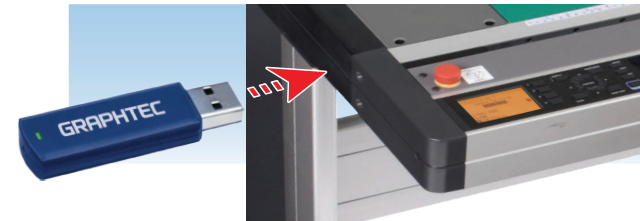


Interface Ports:

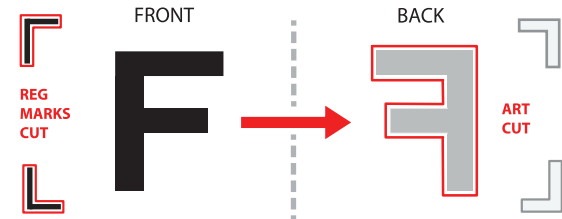
- Ethernet (10BASE-T/100BASE-TX)
- Serial RS-232C
- USB 2.0 High Speed (Type B)



Dual Cutting Head: 1kgf • 500gf



USB Offline Operation



Reverse Cutting



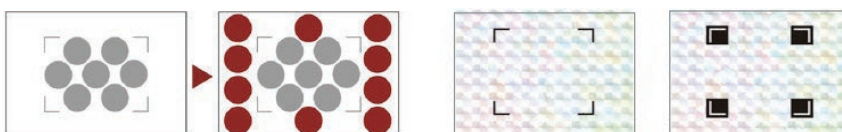
Intuitive 3.7" LCD Control Panel

Increase Capacity with Expanded Cutting Area and More Suction Power

Expanded Contour Cutting Area expands the Print & Cut area to include objects outside of the registration marks. Production efficiency is enhanced and media waste is reduced.

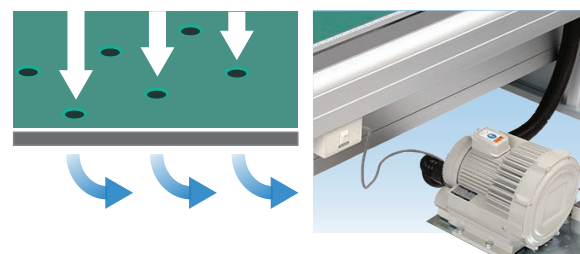
Reversed Color Registration Marks

Registration marks are detectable when there is sufficient contrast against the mark and its background. Ultra glossy and reflective media offer challenges for accurate registration mark detection. With this reversed color output, sufficient contrast is created for contour cutting of preprinted ultra glossy & reflective sheeting.



Expanded Contour Cutting Area

Reversed Color Registration Marks



Enhanced Vacuum Suction Secures Heavier and Thicker Media

The FCX2000 table employs an external 110 Volt enhanced vacuum hold-down capability with increased number of vacuum holes for more suction power. This redesign is significantly valuable when cutting smaller objects that have less surface area.

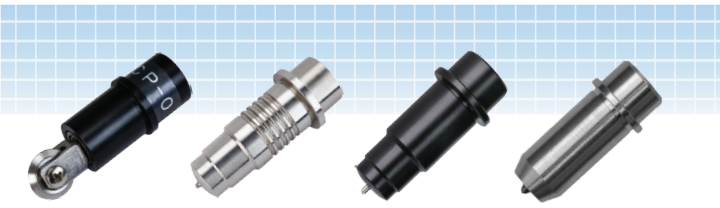
PRECISION CUTTING SOLUTIONS

PRODUCTION CAPABILITIES



Up to 1kgf Cutting Force
16"/s Cutting Speed

Max Cutting Force: Tool 1: 500 gf • Tool 2: 1kgf
Dual Tool Holder accommodates a cutting blade and creasing tool to produce creases, folds and cuts for package prototype media on the same run.



CUT & CREASE with Specialized Creasing Tools

Cutting and creasing of preprinted packaging graphics is possible on the reverse (non-printed) side of the sheet. This method of reverse side cutting and creasing prevents damage and marking of the printed side.



Package Prototyping



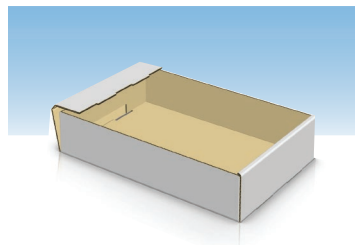
Motocross Graphics



High Intensity Reflective



Automotive Gaskets



Corrugated Cardboard



Polycarbonate Panels



Monument Masking

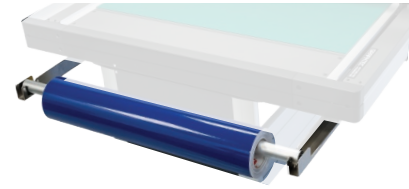


Vinyl Decals

STANDARD ACCESSORIES

Roll Media Stoker:

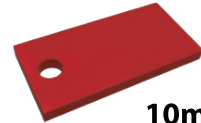
Supports roll media width up to 37" and weight up to 11 lbs.



Blade Holder: PHP35-CB15-HS



Blades: CB15U - CB15U-K30



10mm Jig

Pen Adapter: PHP31-FIBER

Fiber Pen: Lumocolor-311-BK

Blade Loupe: PM-CT-001

This standard accessory helps to easily adjust blade length



Included Design Software and Plugin:

Graphtec provides you all of the tools necessary to create professional products with confidence.

• Cutting Master 5 Plug-in:

Adobe Illustrator (PC / MAC)
CorelDRAW (PC)



• Graphtec Studio 2:

Design Software - PC / MAC



• Windows Driver: AutoCAD etc.

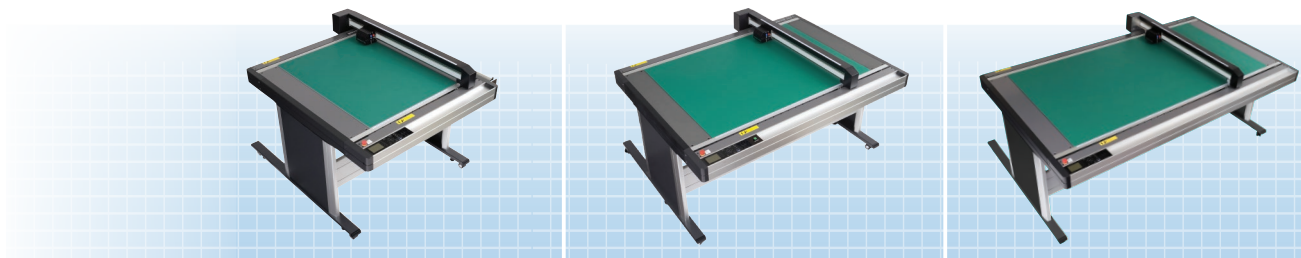


GRAPTEC 2 YEAR STANDARD WARRANTY

MARKET APPLICATIONS

FCX2000 SPECIFICATIONS

GRAPHTEC
PRECISION CUTTING SOLUTIONS



MODEL :	FCX2000-60VC	FCX2000-120VC	FCX2000-180VC
Cutting Area :	24"x 36"	36" x 47"	36" x 70"
Media Hold-Down :	Vacuum Suction		
Mountable Media Width :	37.4" (Y-axis)		
Maximum Cutting Speed :	16"/s (1 to 40 cm/s in 16 steps)		
Cutting Force :	500gf - Tool 1 1kgf - Tool 2		
Numbers Of Tools :	2 Tools		
Bar Code Data Management :	YES		
Off line Output Function :	USB - 64 Files		
Minimum Character Size :	Approx. 10mm (depending on font and material used)		
Roll Media Support :	Up to 36" / 11lbs		
Interface :	Ethernet (10BASE - T/100BASE-TX) USB 2.0 High Speed Serial RS-232C		
Command Modes :	GP-GL™ HP-GL Emulation (selected by menu or automatically by received data)		
ARMS System :	Advanced Registration Mark Sensing System 6.0 • Reverse-side Cutting & Creasing Copy Function • Creasing Function • Repeat Cut Function		
Programmable Resolution :	GP-GL™ Mode: 0.1 / 0.05 / 0.025 / 0.01 mm • HP-GL®: 0.025 mm		
Mechanical Resolution :	0.0025mm		
Unit Dimensions :	52.9" x 55.4" x 36.6" <i>includes media stocker</i>	76.1" x 55.4" x 36.6" <i>includes media stocker</i>	99.7" x 55.4" x 36.6" <i>includes media stocker</i>
Weight :	167.5 lbs with stand & stocker	218 lbs with stand & stocker	255 lbs with stand & stocker
Compatible Media :	Marking Film (Vinyl, Fluorescent & Reflective) • Rigid Paper • Card Stock up to 1.0 mm Sandblast Rubber up to 1.0 mm • Thick Fluted Boards (E, F, G Grades) • Gaskets Polycarbonate Plastic Sheets • High-intensity Prismatic Film • Polystyrene Foam Sheets		



GRAPHTEC STANDARD WARRANTY: 2 YEARS PARTS & LABOR WITH ONLINE PRODUCT REGISTRATION

Software :	Cutting Master 5 - Plugin Adobe Illustrator - Mac/ Win CorelDraw - Win	Graphtec Studio 2 Win/Mac Software	Windows Driver AutoCad / Vector Drawing Software Requiring a Driver
------------	--	---------------------------------------	---



www.graphtecamerica.com/videos

Graphtec Video Training is a comprehensive series of instructional videos that are key to fully understanding the capabilities of the **FCX2000 Series**. **Advanced Features** and **Optional Accessories** are also demonstrated in depth, so you can be fully trained and ready to boost productivity by mastering all the features and utilizing the full potential of this versatile flatbed cutter.