



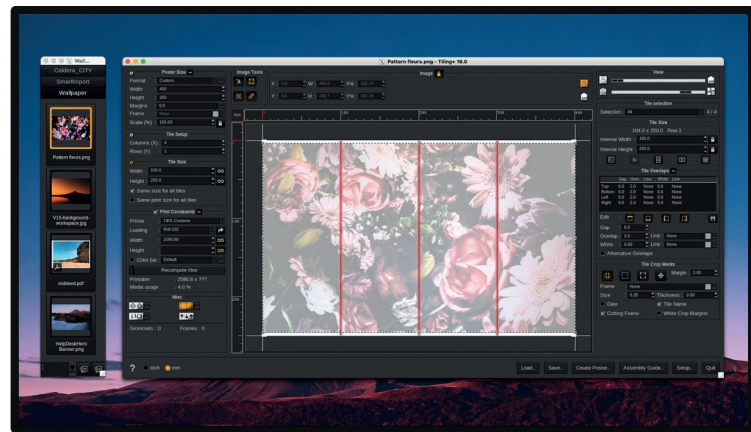
Caldera

# GrandRIP+



## The solution for grand-format visual communication, packaging and industrial printing

- Unify your workflow from prepress to print & cut
- Achieve consistent colors on your printers & substrates
- Automate tasks to save time
- Reduce your production costs



## For grand-format, multi-device, high-volume production environments



### COLOR MANAGEMENT

Print consistent colors across your printers and substrates

- ✓ Access official spot color libraries (Pantone, RAL, HKS...)
- ✓ Create your own ICC profiles
- ✓ Download ready-to-use color profiles from our online library
- ✓ Calibrate your devices



### HIGH PERFORMANCE

Automate your workflow to save time & reduce errors

- ✓ Faster image processing
- ✓ Maximize your printer uptime
- ✓ Reduce your production costs
- ✓ Optimize the use of your resources



### SCALE YOUR PRODUCTION

Drive all your printers with one CalderaRIP license

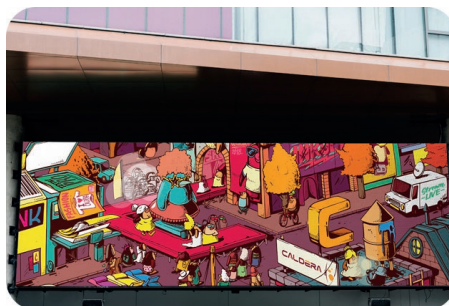
- ✓ One RIP for all your devices
- ✓ Reduced training times
- ✓ Streamline your processes
- ✓ Add new RIP stations as your business grows



### MULTI-LEVEL AUTOMATION

Save time and increase your productivity

- ✓ Create your own production workflows
- ✓ Setup and manage hotfolders
- ✓ Automatically nest your images
- ✓ Use presets to speed up job submission and production





Caldera

# GrandRIP+



# CalderaRIP Version 17



## Exclusive CalderaCare features

CalderaCare is a set of additional, exclusive features including all major upgrades, premium training content and priority access to our technical support.



### InkPerformer

Activate InkPerformer to reduce ink consumption by up to 35% without compromising color accuracy. CalderaCare includes 1 InkPerformer license for one printer.



### REST API

Use the REST API to facilitate the integration of CalderaRIP with third-party applications. Connect your RIP to your web shop or ERP software for a more efficient workflow, and to enable automatic job submission, job spooling and job cost tracking.



### SmartImport

Automatically extract metadata from the filename (copies, printer, presets, height, width, scale) to automate job submission, save time & avoid manual errors.



### PrintProof

Export TIFF proofs of your jobs after ripping and send them to your customers for validation. Avoid waste and reprints.

## FEATURES

Applications	Visual Communication, Industrial Printing, Packaging	
	Pro	Enterprise
# users included	1	1
# printer drivers included	1 Grand	1 Grand
<b>PDF WORKFLOW</b>		
Adobe PDF Print Engine 6.2	✓	✓
<b>PREPRESS</b>		
Tex&Repeat	✓	✓
PrintBleed	✓	✓
Compose	✓	✓
Tiling+	✓	✓
<b>CUT WORKFLOW</b>		
Contour Nesting	✓	✓
Cut Server	✓	✓
Grand Cut Server	Option	✓
Trim-O-Matik	Option	Option
<b>PRODUCTION OPTIMIZATION</b>		
CostProof	Option	✓
Hardware Acceleration	Option	Option
InkPerformer	Option	Option
<b>COLOR MANAGEMENT</b>		
Spot Colors	✓	✓
ICC profile creation	✓	✓
Custom Inkset	Option	Option
Print Standard Verifier	Option	Option
RGB Workflow	Option	Option
<b>AUTOMATION</b>		
Unlimited Hotfolders	✓	✓
Nexio	Option	Option

## DISCOVER OUR BEST-SELLING OPTIONS



### PRINT STANDARD VERIFIER

**Check the conformity of your prints**  
PrintStandardVerifier embeds professional standards and specifications to perform conformity checks of your printing processes in terms of color consistency.



### HARDWARE ACCELERATION

**Speed up ripping & printing tasks**  
Take advantage of your hardware's full capabilities to dramatically reduce ripping and printing times! Speed up your production to deliver all your jobs right on time.

## RESOURCES



REQUEST YOUR FREE DEMO  
[workspace.caldera.com](https://workspace.caldera.com)



ACCESS OUR KNOWLEDGE BASE  
[helpdesk.caldera.com](https://helpdesk.caldera.com)



WATCH OUR VIDEOS  
[youtube.com/calderarip](https://youtube.com/calderarip)

## SYSTEM REQUIREMENTS

CalderaRIP is compatible with Linux and macOS to guarantee stable performance and reliability. Visit our website at [www.caldera.com](https://www.caldera.com) for more information. Our catalogue includes pre-installed DELL computers, ask your Caldera reseller or sales representative for more information.

**CALDERA**  
a DOVER company



CALDERA - 1 rue des Frères Lumière - P.A. d'Eckbolsheim - 67201 Strasbourg -  
France [www.caldera.com](https://www.caldera.com) - Tel. +33 388 210 000 - [contact@caldera.com](mailto:contact@caldera.com)